

69 TOMB DE PRAT PRIMER

WALKING IN ANDORRA



DON'T MISS...

The Sant Joan bonfires in Andorra la Vella. A festivity that is part of the Summer solstice fire festivals in the Pyrenees, declared a UNESCO intangible cultural asset in 2015.

DID YOU KNOW...

That in the 9th century, Bishop Guisard, the Bishop of Seu d'Urgell gave the Emperor Charles the Bald authorisation to pay the tithes with iron and resin paste from Andorra.

BEHIND THE NAME

Prat Primer: a meadow, as an extension of land where grazing grass grows. The name of Prat dates back to 269 and its etymology originates from the Latin word *pratu*, bearing the same meaning..



Signs along the route



Prat Primer shelter



Fire festivity



Removal of bark

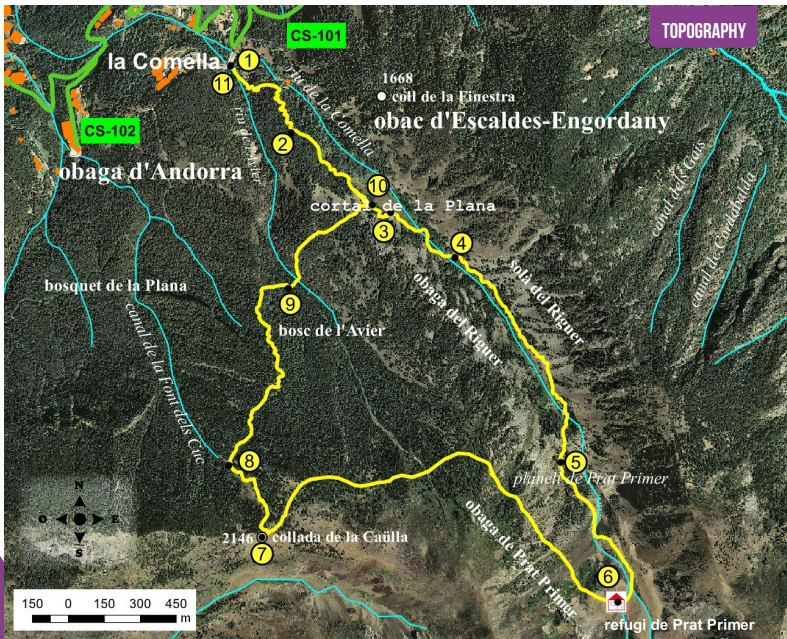
This is an interesting route as you're within one of the buffer or peripheral zones close-by the Madriu-Perafita-Claror Valley, the greatest example of cultural landscape of Andorra and one of exceptional universal value, hence in 2004 the area was declared a UNESCO Cultural Landscape World Heritage Site.

The peripheral area encompassing Riguer, Prat Primer and part of Obaga d'Andorra plays its role, which is to enable a harmonious and progressive connection of the site with the rest of the region. The stone structures which can be seen are mainly old roads, terraces and coaling areas, remains of seasonal mountain accommodation and farming areas (pens, dairies and barns).

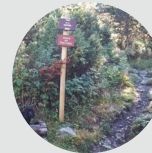
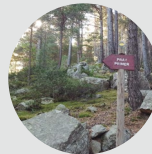
The declaration of the VMPC as a UNESCO

Cultural Landscape World Heritage Site, is recognition of the heritage value and international nature of the Pyrenees landscapes as a whole. This area was key to human activities here. This human occupation dates back to the Neolithic period, which continues throughout Roman times and manifests its greatest anthropisation between the 14th and 19th centuries. During the Roman occupation, special relevance must be given to the resin paste ovens which used the resin from the mountain pine (*pinus uncinata*) as its raw material. As of the 14th century there is a notable presence of barns for making cheese, without forgetting the Andorran forge dedicated to the metal industry since 1732 up until the first third of the 19th century.

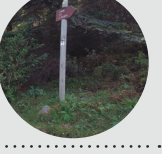
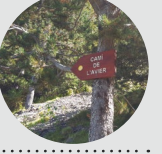
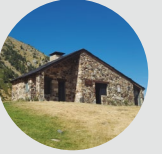
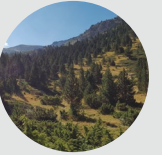
69



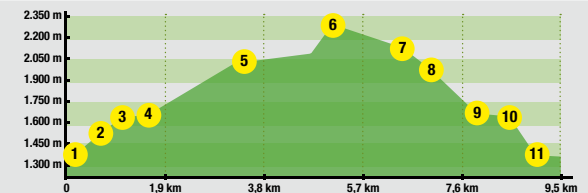
PLACE	DISTANCE	TIME	COORDINATES	DESCRIPTION
ALTITUDE	ASCENT/DESCENT			
1				
COMELLA PICNIC AREA	-- (--)	--	N42 29.906 E1 31.829	To reach the starting point, take the Comella road (CS-101) from Andorra la Vella and follow it until reaching kilometre 4. Turn right at the intersection for the Comella Parc Residential Area. Then you'll come to a small car park where you can park your vehicle. Next to the car park you'll find an information sign for the Prat Primer path.
2				
INTERSECTION	680 m (+155 m)	30'	N42 29.756 E1 32.015	The trail climbs while meandering through Bosquet de la Plana. Continue to follow the signs for Prat Primer.
3				
CORTAL DE LA PLANA	1.420 m (+130 m)	55'	N42 29.579 E1 32.320	Turn left towards Prat Primer. Continue gaining altitude within the forest. Gradually the forest becomes less dense and you'll come across the odd scree. Reach the intersection with Avier forest path and you will soon reach Cortal de la Plana.
4				
FONT TARTERA GRAN WATER SPRING	1.840 m (+66 m)	1h 10'	N42 29.479 E1 32.517	As of here the forest becomes less dense and you can enjoy the first views of this route. Continue climbing among meadows and scree until reaching the Font de la Tartera Gran water spring.



PLACE	DISTANCE	TIME	COORDINATES	DESCRIPTION
ALTITUDE	ASCENT/DESCENT			
5				
PLANELL DE PRAT PRIMER	3.240 m (+350 m)	2h 10'	N42 29.021 E1 32.845	Continue climbing, always following the course of the River Comella. The track becomes much steeper along the bottom of the valley heading south-east. After a long slope, you'll reach the Prat Primer plateau.
6				
PRAT PRIMER REFUGE	4.040 m (+199 m)	2h 45'	N42 28.708 E1 33.022	The path becomes easier as you advance among meadows and a few mountain pines. Along the stretch remaining until you reach the Prat Primer refuge, you can easily hear the cries of the marmots.
7				
COLLADA DE LA CAÜLLA	6.090 m (+50 m) -140 m)	3h 15'	N42 28.846 E1 31.938	From here take the Avier path. The path advances towards the west, bends around the mountain until reaching the Collada de la Caülla mountain pass.
8				
FONT DEL CUC WATER SPRING	6.590 m (-160 m)	3h 35'	N42 29.007 E1 31.835	Backtrack a few metres and take the Collada de la Caülla path that descends while heading north. Continue descending through the forest until reaching an intersection where you will see a sign for Camí del bosc de l'Avier and the Font del Cuc water spring.
9				
BOSC DE L'AVIER PATH	7.740 m (-275 m)	4h 10'	N42 29.406 E1 32.011	Continue descending through the Avier forest until you reach an intersection. There are no signs but continue along the path to your right following the same direction as before.
10				
CORTAL DE LA PLANA	8.360 m (+100 m)	4h 25'	N42 29.596 E1 32.264	Follow the route heading north-east until you reach the intersection with the Avier forest path. Until just below the Cortal de la Plana farm.
11				
COMELLA PICNIC AREA	9.470 m (-275 m)	5h	N42 29.906 E1 31.829	At this point, turn back and return along the same route as used, until reaching the starting point.



ROUTE PROFILE



TECHNICAL INFORMATION

- 5H
- +1050 M
-850 M
- 9.470 M
- SI
- APPROXIMATE TIME

ROUTE SIGNAGE

- WRONG DIRECTION