

32 PIC BLANC

DON'T MISS...

check out the Grau Roig resort, packed with outdoor activities.

DID YOU KNOW...

the building at the bottom of the peak was Sud Ràdio, which bore witness to the legacy over the issue of radio control that marked Andorra for much of the 20th century?

BEHIND THE NAME

Envalira: documented in the 10th century as Valerie. It is a compound name comprising the toponymic prefix en- (Encamp) and a derivative of the Latin Valeria, which is probably the name of a Roman-era family who owned a lot of property in the Pyrenees.

WALKING IN ANDORRA



Sud Ràdio



Coll Blanc



Pas de la Casa

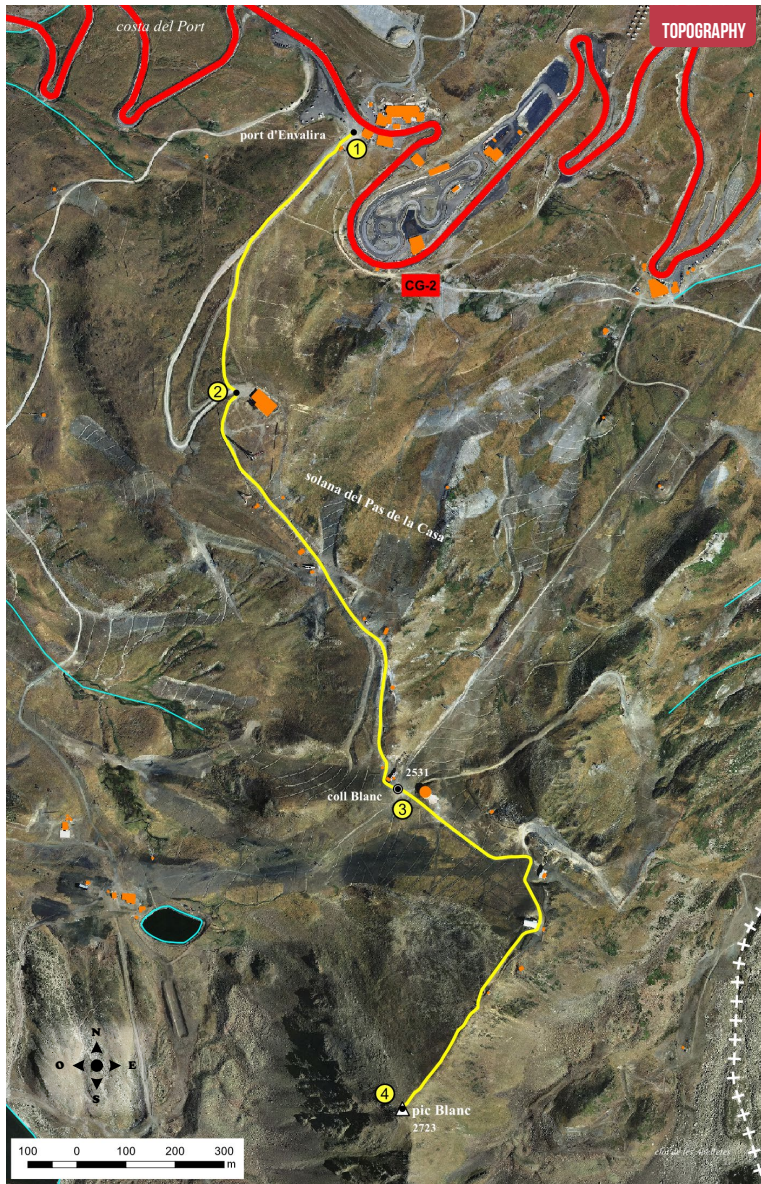
This simple hike takes you to Pic Blanc d'Envalira. The peak is surrounded by Pic d'Envalira and Pic Negre d'Envalira.

This peak offers a spectacular viewpoint from which you can see the Andorran Pyrenees, as well as the areas of Pas de la Casa and Grau Roig. You'll also be able to see the majestic Pessons glacial cirque, the most impressive in the country.

With a little more than 300 metres of elevation gain, this short route is a breath of fresh air on a summer's day, as the start of the route is already at 2,408 metres above sea level. It wouldn't be unusual to find yourself surrounded by fog at the head of the pass, depending

on the difference in temperature between the village of Pas de la Casa and the Port d'Envalira pass.

Vegetation is not at all abundant due to the altitude, but you can see alpine toadflax (*Linaria alpina*) and thrift (*Armeria martima alpina*), adding a little colour to the environment. In terms of fauna along the route, it's worth highlighting one bird of prey in particular: the common kestrel (*Falco tinnunculus*), a small falcon with a slender silhouette, thin and sharp wings, and which has clear underparts with black. On top, it is reddish brown, with dark wings and a bluish grey tail.



TECHNICAL INFORMATION

- ● ● ●
- 1H 10 MIN
- 50 MIN
- +325 M
-10 M
- 2.550 M
- APPROXIMATE TIME

ROUTE SIGNAGE

- ● ●
- WRONG DIRECTION



PLACE	ALTITUDE	DISTANCE ASCENT/DESCENT	TIME	COORDINATES	DESCRIPTION
1 PORT D'ENVALIRA	2.408 m	-- (--)	--	N42 32.394 E1 43.133	Take the CG-2 towards France until you get to the Port d'Envalira pass, where you'll find an information panel about Pic Blanc.
2 SUD RADIO	2.495 m	628 m (+87 m)	20'	N42 32.109 E1 42.986	The path climbs up the ski slope in a south-westerly direction. After the first few metres of elevation gain, you'll arrive at the building of the old private radio station, Sud Ràdio.
3 COLL BLANC	2.530 m	1600 m (+45 m -10 m)	35'	N42 31.675 E1 43.231	Continue climbing up the same ski slope in a south-easterly direction. Pass the return side of a chairlift and continue along the same slope. After a short descent, you'll get to Coll Blanc.
4 PIC BLANC	2.723 m	2550 m (+193 m)	1h 10'	N42 31.324 E1 43.234	From this point on, you'll have a view of the top. Continue climbing up a steep slope until you get to the return route of the Pic Blanc chairlift. Skirt the chairlift and climb up following the line of the Pic Negre ski lift. The last section takes you along the ridge of the mountain until you get to the top of Pic Blanc.

