

88 CAMÍ VELL D'AUVINYÀ

DON'T MISS...

walking through the village of Aubinyà or Auvinyà, a typical Pyrenean village.

DID YOU KNOW...

the Eurasian sparrowhawk (*Accipiter nisus*) is one of the most common birds of prey in the forests of Andorra.

BEHIND THE NAME

Auvinyà: the ending -inyà, which was originally -inyas, comes from the plant world and could refer to a colony of poplars. It may indicate a grove formed by poplars or aubes, which retain their stronghold in this region even after all this time.

WALKING IN ANDORRA



Fly agaric



Cow



Auvinyà



Bordes d'Auvinyà

This magnificent route introduces you to the bucolic village of Aubinyà or Auvinyà, the natural surroundings of Solà del Mas, the centuries-old Bordes del Mas and the old town of Aixirivall, with its manor houses and bordes. You can also take a look at Sant Romà d'Auvinyà church, a 17th-century construction that was renovated in 1964 following designs by the Catalan architect César Martinell. The bell tower has a belfry with a semicircular window.

The floor plan is rectangular, with a single nave covered with wooden trusses, and the apse is trapezoidal and covered with a barrel vault.

There is a large variety of trees to be seen, including: Persian walnut (*Junglans regia*), black poplar (*Populus nigra*), European ash (*Fraxinus excelsior*), wild cherry (*Prunus avium*) and a lot of holm oak (*Quercus rotundifolia*).

The path runs between rocks decorated with tiny pink common heather flowers (*Calluna vulgaris*). There's a rich diversity of fauna in the River Auvinyà, with the colourful Pyrenean newt (*Euproctus asper*) and the Pyrenean desman (*Galemys pyrenaicus*) standing out for their rarity. Both species are endemic to the Pyrenees, which means they are not found anywhere else in the world.

88

SANT JULIÀ DE LÒRIA

88. CAMÍ VELL D'AUVINYÀ

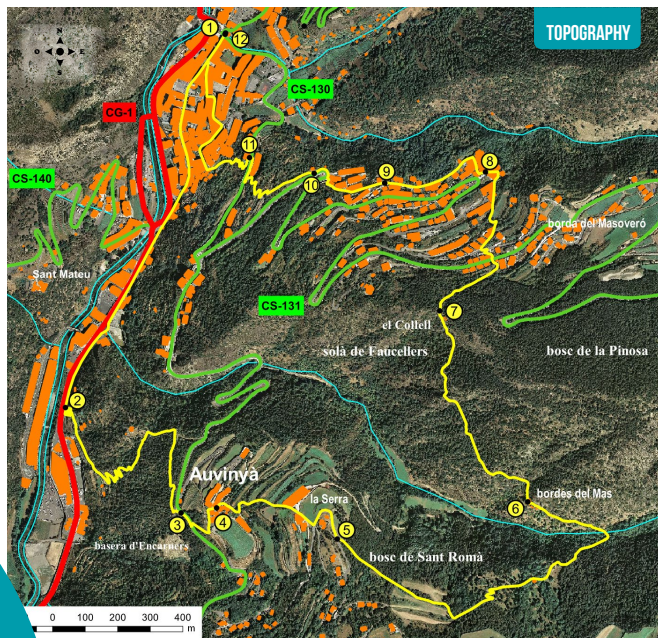
TECHNICAL INFORMATION

- 3H 05 MIN
- +517 M
- 517 M
- 8.484 M

APPROXIMATE TIME

ROUTE SIGNAGE

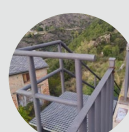
- WRONG DIRECTION
-



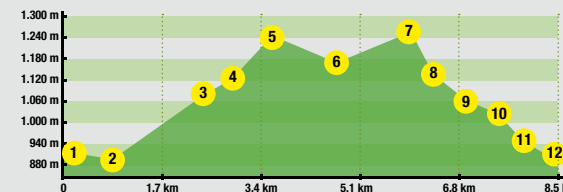
PLACE ALTITUDE	DISTANCE ASCENT/DESCENT	TIME	COORDINATES	DESCRIPTION
1 SANT JULIÀ DE LÒRIA TOURIST INFORMATION OFFICE 911 m	--	--	N42 28.007 E1 29.547	The starting point for the route is in the centre of Sant Julià de Lòria, at the Tourist Information Office.
2 CAMÍ VELL D'AUVINYÀ 884 m	1.476 m (-27 m)	10'	N42 27.374 E1 29.202	Take Avinguda Verge de Canòlich in the direction of the border between Spain and Andorra. After leaving the centre of Sant Julià and two roundabouts behind, take the wide, cobbled Camí Vell d'Auvinyà.
3 LA RABASSA MAIN ROAD 1.091 m	2.646 m (+209 m)	50'	N42 27.203 E1 29.454	Continue in a zigzag fashion. The cobbled path turns into a mountain path and, after leaving behind Borda del Ferré, you come to the La Rabassa main road.
4 AUVINYÀ 1.134 m	2.922 m (+43 m)	1h	N42 27.210 E1 29.537	Cross the main road, where the path continues a few metres further up. After climbing a pronounced slope, you'll get to the village of Auvinyà.
5 CAMÍ DEL MAS 1.242 m	3.527 m (+110 m)	1h 20'	N42 27.159 E1 29.808	The path continues to Sant Romà church. Then continue along the tarmac main road to the crossroads with Camí del Mas.



PLACE ALTITUDE	DISTANCE ASCENT/DESCENT	TIME	COORDINATES	DESCRIPTION
6 BORDES DEL MAS 1.223 m	5.027 m (+100 m -79 m)	1h 50'	N42 27.224 E1 30.237	Follow the GR 7 (white and red marks). Leave behind a small <i>borda</i> (hut). Pass through a metal gate again and, shortly afterwards, cross the River Auvinyà. You'll then come to the Bordes del Mas.
7 EL COLLET GR-7 CROSSROADS 1.282 m	5.862 m (+66 m -6 m)	2h 10'	N42 27.539 E1 30.035	Follow the cobbled path along Solà del Mas. You'll come to Collet, where you'll find the crossroads between the GR 7 and Camí d'Aixirivall.
8 SANT PERE D'AUVINYÀ 1.136 m	6.560 m (-145 m)	2h 30'	N42 27.770 E1 30.135	Leave the GR-7 and continue downhill, following the yellow dots towards Aixirivall. You'll have to cross the main road twice and continue along a cobbled path to the village of Aixirivall, where you'll find Sant Pere d'Aixirivall church.
9 CROSSROADS 1.106 m	6.997 m (-32 m)	4h 25'	N42 27.748 E1 29.908	Continue down the cobbled street and turn left at Casa Segobet. Keep going until you come to a crossroads.
10 METAL STAIRS 1.053 m	7.729 m (-50 m)	2h 40'	N42 27.771 E1 29.748	Continue right along the asphalt street and then along the cobbled path surrounded by rustic buildings. Continue along the main road to reach some narrow steps.
11 CROSSROADS MAIN ROAD 970 m	7.997 m (-83 m)	2h 50'	N42 27.771 E1 29.748	Go down them, coming again to the main road and another crossroads.
12 TOURIST INFORMATION OFFICE 911 m	8.484 m (+5 m -70 m)	3 h 05'	N42 27.410 E1 28.779	Following a narrow, cobbled path, come to the centre of Sant Julià and Carrer Camp de Perot (on the right), then Carrer de les Escoles (in the centre) and afterwards Carrer del Dr. Palau, until you're once again at Avinguda Verge de Canòlich and, a few metres away, the Tourist Information Office.



ROUTE PROFILE



Sant Julià de Lòria
portal d'Andorra