

72 CAMÍ DE LA FONT DE FERRO

DON'T MISS...

pay close attention to the melody of the birds that live in this area.

DID YOU KNOW...

you can find paths called Font de Ferro in several parishes in Andorra.

BEHIND THE NAME

Comella: depression without marked unevenness.



Amanita muscaria



*Barometer earthstar
(Astraeus hygrometricus)*

Camí de la Font de Ferro is located in La Obaga in Andorra la Vella. This is an ideal path to do during the warmer months due to the coolness it offers thanks to the shaded area and the surrounding vegetation. The path takes you to Alt de la Comella, a small pass well-known to cyclists.

On this route, you'll find sessile oak groves, traces of old terraces and even some sections of cobbled road. You're also accompanied by Maidenhair spleenwort (*Asplenium trichomanes*) and black spleenwort (*Asplenium adiantum-nigrum*). When it comes to undergrowth, you'll spot common box (*Buxus sempervirens*)

all the way, as well as mahaleb cherry (*Prunus mahaleb*), with rounded, shiny, refined leaves. Depending on the time of year, it won't be difficult to see Herb robert (*Geranium robertianum*), with pink flowers and very divided leaves and greater stitchwort (*Stellaria holostea*).

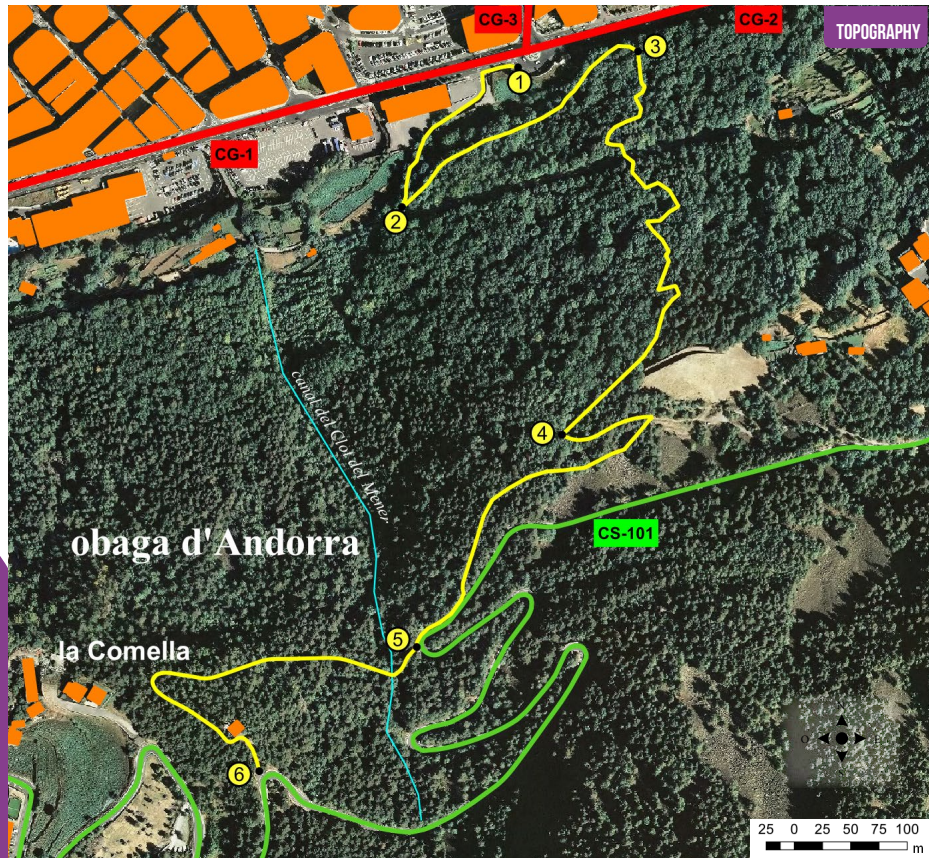
As for the fauna, during the breeding season there are Eurasian jay (*Garrulus glandarius*), the common firecrest (*Regulus ignicapilla*), garden warbler (*Sylvia borin*) and common chaffinch (*Fringilla coelebs*), as well as birds such as European robin (*Erithacus rubecula*), Eurasian blackcap (*Sylvia atricapilla*) or short-toed tree-creeper (*Certhia brachydactyla*).

TECHNICAL INFORMATION

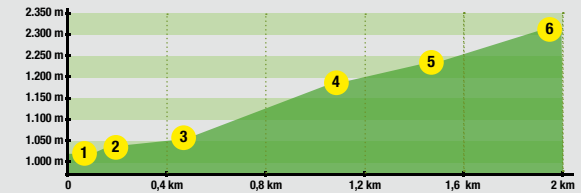
-    
-  1H 10 MIN
-  45 MIN
-  +315 M
-  -8 M
-  2.005 M
-  NO
-  APPROXIMATE TIME

ROUTE SIGNAGE

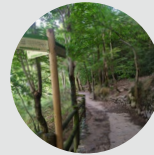
-   
-  WRONG DIRECTION



ROUTE PROFILE



PLACE ALTITUDE	DISTANCE ASCENT/DESCENT	TIME	COORDINATES	DESCRIPTION
1 KM 0 1.030 m	-- (--)	--	N42 30.391 E1 32.047	The starting point of the route is at kilometre 0 in the parish of Andorra la Vella, a few metres from the Fener car park.
2 CAMÍ DE L'OBAC 1.037 m	200 m (+12 m)	5'	N42 30.319 E1 31.971	A few metres down from kilometre 0 to the south, you'll find the entrance to a private car park for a motorbike shop. On the left-hand side of the car park is a wide cobbled path that takes you a few metres above Camí de l'Obac.
3 CAMÍ DE LA FONT FREDA 1.050 m	510 m (+9 m)	10'	N42 30.391 E1 32.129	Follow Camí de l'Obac on your left. Flattening out along a wide cobbled path, you'll come to a wooden water spring and, shortly afterwards, Camí de la Font Freda.



PLACE ALTITUDE	DISTANCE ASCENT/DESCENT	TIME	COORDINATES	DESCRIPTION
4 DRY STONE REFUGE 1.188 m	1.090 m (+159 m)	35'	N42 30.209 E1 32.078	Continue along the narrow path and, a few metres later, you'll come to a small wooden bridge. Heading uphill, weaving around old terraces, you'll get to a dry stone refuge.
5 CAMÍ DE LA MATA 1.247 m	1.530 m (+218 m)	50'	N42 30.108 E1 31.983	Flattening out in amidst the moss, you come to a private property bounded by a wall and a wire mesh fence. The path continues to the right-hand side. After a few metres, stay parallel to a scree slope and, gaining altitude, you'll come to the Comella main road a few metres from Camí de la Mata.
6 ALT DE LA COMELLA 1.345 m	2.005 m (+298 m)	1h 10'	N42 30.045 E1 31.881	Continuing along Camí de la Mata, the first few metres flatten out before arriving at Alt de la Comella. With the help of steps and chains, tackle the most demanding part of the slope. At Alt de la Comella, you'll find a large communications tower and, after a few metres, the road.

