

07 CABANA SORDA LAKE

HIKING IN ANDORRA



DON'T MISS...

a visit to the Romanesque church of Sant Joan de Caselles, located at the exit of the village of Canillo, with its rectangular, wood-covered nave, semicircular apse and Lombard-style bell.

DID YOU KNOW?

One of the oldest heraldic emblems in use, the Andorran coat of arms makes reference to the country's history and situation. The coat of arms also bears the motto "*VIRTUS UNITA FORTIOR*", which is translated literally as: "union creates strength".

TOPONYMY

Cabana Sorda:
Sorda: Said of a closed space, such as a large corner surrounded by very straight slopes.



Incles valley



Incles valley



Genista plant
(*Genista balansae*)



Cabana Sorda river

Cabana Sorda lake is located at 2,290 metres altitude, in one of the glacial cirques of Incles valley, in the parish of Canillo. This route will take you through the most important glacial valley in Andorra with regard both to its width, in the shape of a U, and to its state of conservation.

The beauty of the landscape will treat you to great meadows of wild grain and subalpine settings. According to the time of year, the most prominent flora includes the English iris (*Iris latifolia*), the alpine pasqueflower (*Pulsatilla alpina*) and the original poet's daffodil (*Narcissus poeticus*), the typical flower of Andorra, among others.

As for fauna, it must be mentioned that this valley is home to more than 100 different species, including the palmate newt (*Lissotriton helveticus*), the brown frog (*Rana temporaria*), the sand lizard (*Lacerta agilis*) and the friendly marmot.

Due to the relatively undemanding character of the route, it has become rather busy and family-oriented. Alongside the lake is a refuge with the same name. It has capacity for 20 people and water is available.

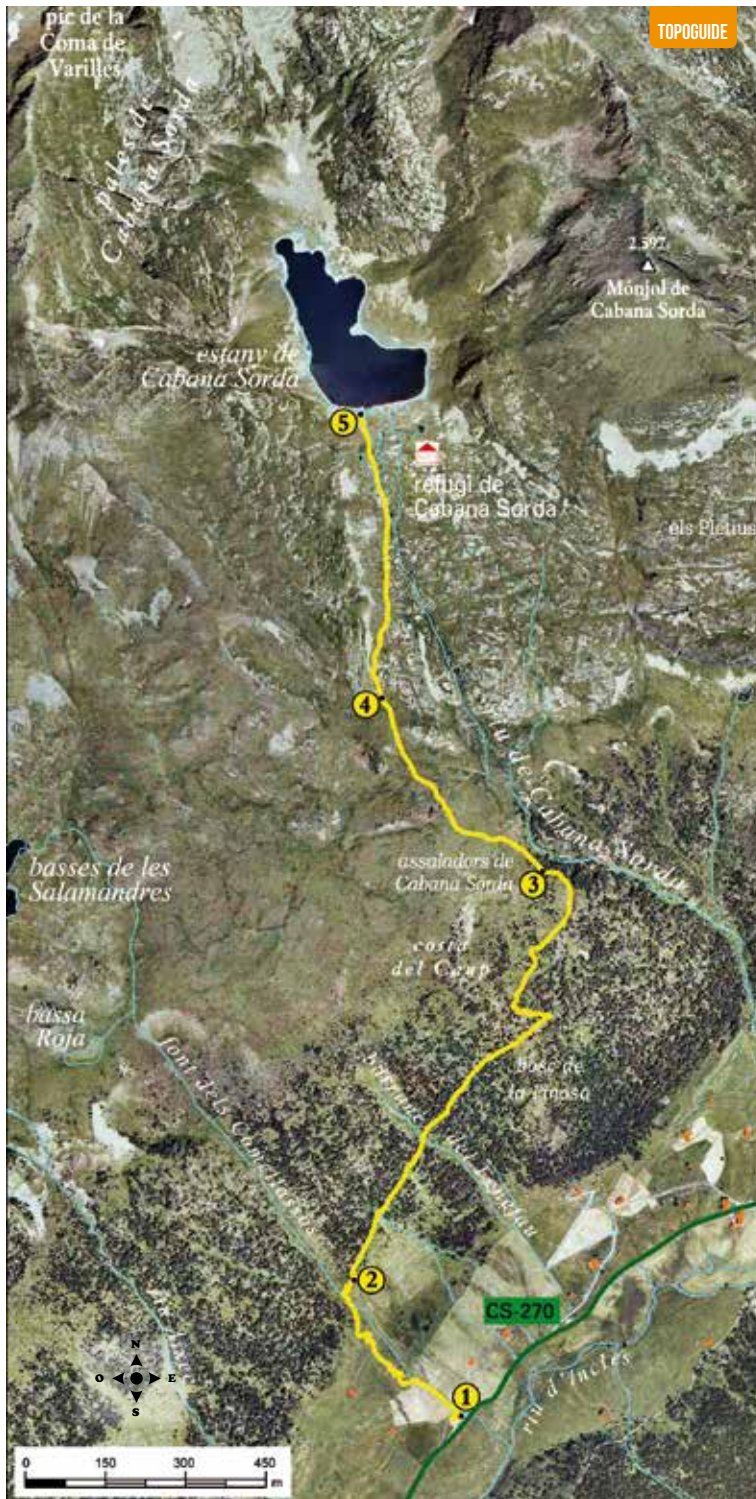
Fishing takes place in this lake from April to September, and you can practice highmountain diving thanks to its depth of 18 metres.



DATA SHEET

-    
-  1H 45 MIN
-  1H 30 MIN
-  +470 M
-  2.760 M
-  NO
-  APPROXIMATE WALKING TIMES

ROUTE SIGNPOSTING

-   
-  WRONG WAY



LOCATION	DISTANCE DROP	TIME	COORDINATES	DESCRIPTION
1 INCLES VALLEY 1.825 m	-- (--)	--	N42 35.707 E1 40.398	The path to Cabana Sorda lake is 1.5 km from the narrow Incles valley road. Beside a water tank, you'll see a wooden sign with information on this pleasant hike. 
2 LA PINOSA FOREST 1.930 m	490 m (+105 m)	30'	N42 35.844 E1 40.250	The route begins from the water tank. The path climbs along the Els Comellassos fountain stream, where you'll cross for the first time. Further along, the path enters La Pinosa forest. 
3 ASSALADORS DE CABANA SORDA 2.160 m	1.640 m (+230 m)	1h 15'	N42 36.259 E1 40.503	Continue diagonally, heading northeast, with a moderate slope. After passing the El Fenefau ravine, the path climbs, making detours until you come to the Assaladors de Cabana Sorda. 
4 QUEROL LAKE AND LES SALAMANDRES LAKE INTERSECTION 2.335 m	2.140 m (+80 m)	1h 30'	N42 36.433 E1 40.281	After leaving the forest, the path crosses an alpine meadow. Soon you reach a small pass, where you'll see a sign pointing the way to Querol lake and les Salamandres lake. The path continues toward the north. 
5 CABANA SORDA LAKE 2.295 m	2.760 m (+55 m)	1h 45'	N42 36.720 E1 49.249	When you come to the Cabana Sorda river, follow it to the lake. The refuge is a few metres away. 