

# 90 ITINERARI D'ENTREMESAIGÜES

## DON'T MISS...

a visit to Caldea, the largest thermoludic spa resort south of the Pyrenees, offering relaxing days surrounded by the country's landscapes.

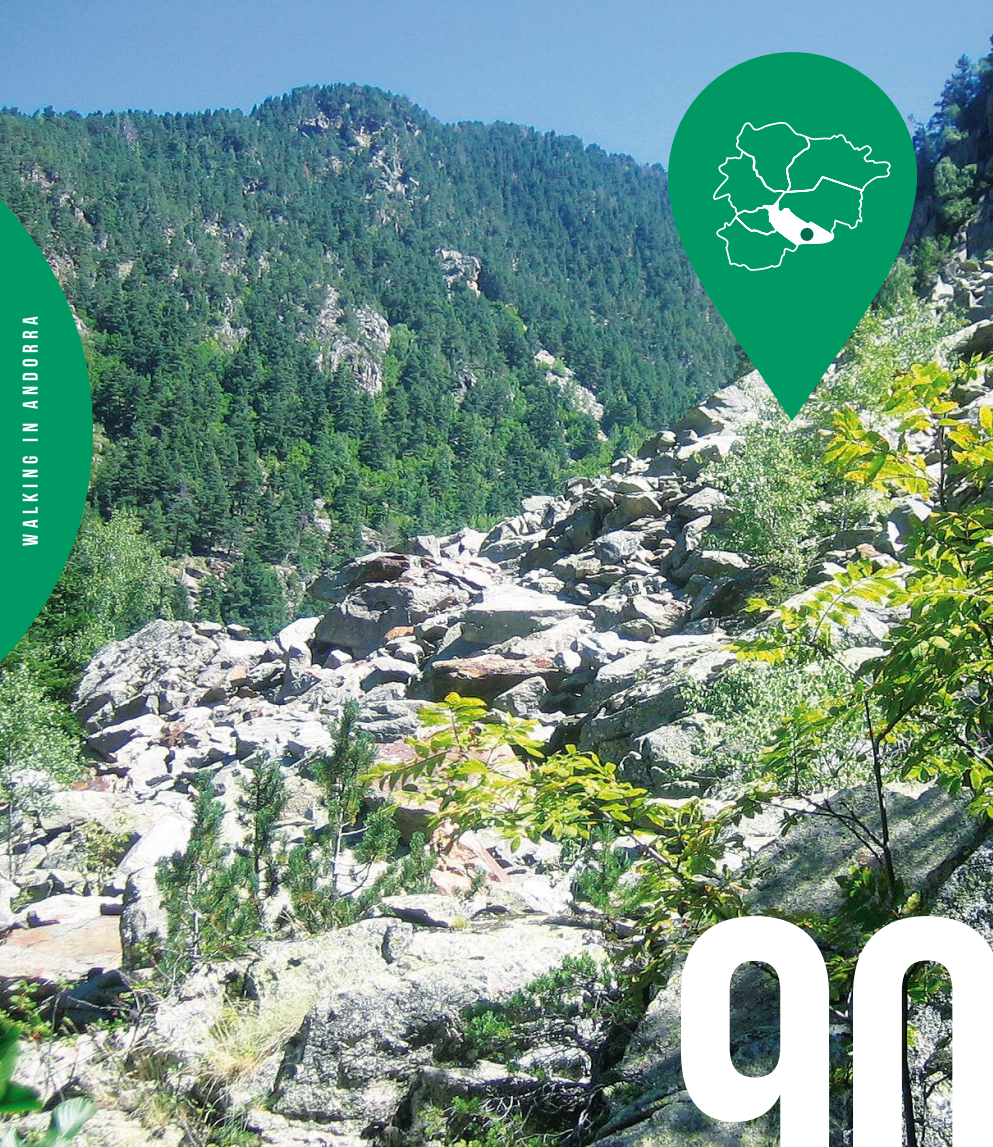
## DID YOU KNOW...

On the Els Escalls bridge, the Pareatges (feudal agreements) were signed, which are considered the most important documents in Andorran history until the Constitution in 1993.

## BEHIND THE NAME

**Entremesaigües:** From the Latin *inter ambas aquas*, "between two waters". A fitting name, as the huts in this place are found where the Claror i Perafita river empties its waters into the Madriu river.

WALKING IN ANDORRA



Long-distance path



Claror i Perafita rivers



Boïgot fountain path  
(*Certhia brachydactyla*)



Boïgot fountain path

The Entremesaigües route is located in the Madriu-Perafita-Claror valley in the Escaldes-Engordany parish. The parish extends along southeastern Andorra. It is bordered on the north by the Encamp parish and a bit of the la Massana parish, and to the west on the Andorra la Vella and Sant Julià de Lòria parishes, with which it shares some vague borders.

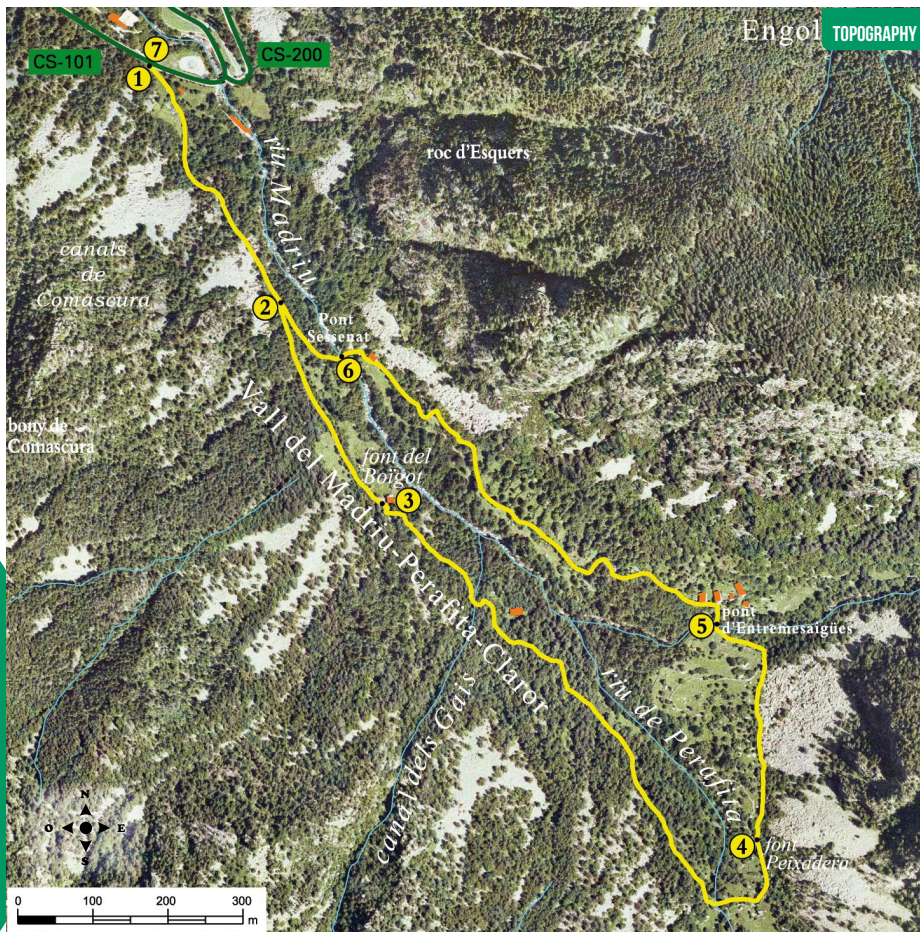
Escaldes-Engordany is the newest of the seven Andorran parishes; it came about in 1978 through the division of a former Andorran parish. It has an interesting architectural heritage, represented by the 12<sup>th</sup>-century church of Sant Miquel d'Engolasters and the 10<sup>th</sup>-century church of Sant Romà dels Vilars, as well as by the Els Escalls, Engordany, Tosca and Pla bridges. Among the many ancient monuments

and modern-day buildings, one you won't want to miss is Caldea, the largest thermoludic spa resort in southern Europe.

The Madriu valley is a long glacial valley that runs from east to west. The typical flora of the region includes Scots pine (*Pinus sylvestris*) and mountain pine (*Pinus uncinata*). The undergrowth is mostly made up of alpenrose (*Rhododendron ferrugineum*) and European blueberry (*Vaccinium myrtillus*). The most interesting birds include the black woodpecker (*Dryocopus martius*), whose song you're sure to hear and who knows, it might even come into view to show off its spectacular black feathers. Without forgetting the great tit (*Parus Major*) and the treecreeper (*Certhia sp.*).

# ESCALDES- ENGORDANY

90. ITINERARI D'ENTREMSAIGÜES



## TECHNICAL INFORMATION

- 1H 30 MIN
- +280 M
- 280 M
- 3.910 M
- SI
- APPROXIMATE TIME

## ROUTE SIGNAGE

- GR 7/11.10
- WRONG DIRECTION

PLACE ALTITUDE	DISTANCE ASCENT/DESCENT	TIME	COORDINATES	DESCRIPTION
<b>1</b> LA PLANA ROAD 1.235 m	-- (--)	--	N42 30.253 E1 33.059	To get to the starting point, take the Engolasters road (CS-200) from Escaldes-Engordany. After the 1 km mark you'll see the La Plana road (CS-101) on the right. Follow it for 100 metres until you reach the starting point, where you'll find signs with information.
<b>2</b> INTERSECTION WITH COMMUNAL PATH 1.300 m	415 m (+65 m)	10'	N42 30.084 E1 33.188	Going up the paved path, on the righthand side you see a path marked with yellow dots. Follow it.



PLACE ALTITUDE	DISTANCE ASCENT/DESCENT	TIME	COORDINATES	DESCRIPTION
<b>3</b> BOÏGOT FOUNTAIN 1.365 m	760 m (+65 m)	20'	N42 29.941 E1 33.288	Continue going up through a shaded area until you reach the Boïgot fountain in front of a mountain hut.
<b>4</b> PEIXADERA FOUNTAIN 1.515 m	1.780 m (+150 m)	50'	N42 29.701 E1 33.656	Suddenly the path stops going up. You come out of the forest and cross the Claror i Perafita river over a small bridge. After going through a meadow, you meet up with and follow the GR-11.10 long-distance path down until you see the Peixadera fountain.
<b>5</b> ENTREMSAIGÜES BRIDGE 1.460 m	2.120 m (-55 m)	1h	N42 28.868 E1 34.533	Going down the GR path, you come to the Entremesaigües bridge, with a group of cabins also there under the same name.
<b>6</b> SESSENAT 1.315 m	2.910 m (-145 m)	1h 20'	N42 30.046 E1 33.248	You follow the GR-7 path down to your left along the paved path to the Madriu river, until you reach the beautiful granite bridge at Sessenat.
<b>7</b> LA PLANA ROAD 1.235 m	3.910 m (-80 m)	1h 30'	N42 30.253 E1 33.059	After crossing the Madriu river, you keep going down until you return to the starting point.



## ROUTE PROFILE

