

52 ANYÓS-L'ALDOSA: CAMÍ DEL SOLÀ CORTALS D'ANYÓS - COLLADA DE L'ESTALL

WALKING IN ANDORRA



DON'T MISS...

The Roser de La Massana celebrations, held on the second Sunday of July, and the annual festivities of Anyós, on 10 July, which honour Sant Cristòfil, the patron saint of motorists. Cars are blessed in front of the church. La Massana's annual festivities take place on 15 and 16 August.

DID YOU KNOW...

A few metres from the starting point, you'll find the 12th century Romanesque church of Sant Cristòfol d'Anyós, located at the highest part of the town. This church was built strategically on a small high plain that allows for visual control of the entrance to the valley from Escaldes-Engordany, the towns of Sispony, la Massana and even Ordino.

BEHIND THE NAME

Anyós: From the Basque *angio-a*, meaning "pasture", and a pre-Roman ending which, according to Coromines, could pertinently be related to the Basque adjective *otz*, meaning "cold".



Anyós



Houseleek
(*Sempervivum Montanum*)



La Gonarda forest



Els Cortals path

The Solà path is in the parish of La Massana, between the towns of Anyós and L'Aldosa. This particular excursion passes through the forests of La Massana, among silver birches, hazels and a number of other alpine species. From 2,000 m in elevation upward, scots pines become more commonplace. The view is extraordinary from the Collada de l'Estall mountain pass, particularly of the Peak of Casamanya and the Cortals de Sispony farmhouses.

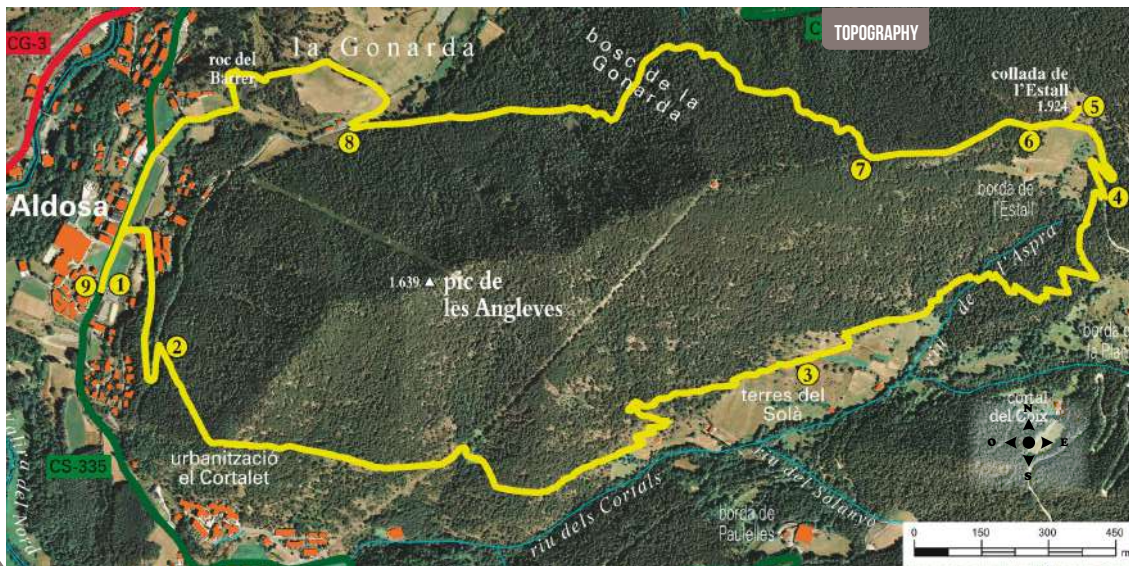
All along the way you'll encounter typical alpine drystone mountain huts, which were very important to the shepherding way of life.

The parish covers a surface of 65 km² and has approximately 9,500 inhabitants. It's made up of seven quarts (territorial sub-divisions): Pal, Arinsal, Erts, Sispony, Anyós, l'Aldosa and La

Massana, which is the capital. It also has six small urban communities: El Pujol del Piu, Escàs, Els Plans, El Mas de Ribafeta, Xixerella and El Pui.

The sunny and picturesque town of l'Aldosa has amazing views of the Church of Anyós and the Serra de l'Honor ridge, as well as the impressive Casamanya Peak. This small town also houses the Church of Sant Armengol, the patron saint honoured by this Romanesque church.

The town of Anyós is 1,307 metres above sea level, on a mountain ridge, between the left bank of the River Ordino and the right bank of the River Anyós (whose source is on the west side of the Bony de les Neres), near the confluence of both rivers.



* You can return via the La Gonarda road until reaching the village of L'Aldosa de la Massana. Another option would be to return along the same route by which you came.

ROUTE PROFILE



TECHNICAL INFORMATION

-
- 4H 10 MIN
- +634 M
-636 M
- 7.480 M
- YES*
- APPROXIMATE TIME

ROUTE SIGNAGE

-
- WRONG DIRECTION

PLACE	ALTIITUDE	DISTANCE ASCENT/DESCENT	TIME	COORDINATES	DESCRIPTION	
1 THE TOWN OF ALDOSA	1.290 m	-- (--)	--	N42 32.411 E1 31.443	After leaving the town of l'Aldosa, take the road that leads to La Gonarda, and after the first bend, take the Camí de les Angleves path.	
2 MOUNTAIN HUT	1.460 m	1.530 m (+170 m)	40'	N42 32.443 E1 32.292	Follow the Camí de les Angleves until you reach the Camí dels Cortals, which forks off to the left. The path zigzags all the way up to the mountain hut.	
3 TERRES DEL SOLÀ	1.577 m	2.230 m (+117 m)	1h 10'	N42 32.544 E1 32.556	The path ascends along the Solà area. As you climb up the path, you'll have an amazing view of the Cortals d'Anyós farmhouses.	
4 TRAIL INTERSECTION	1.885 m	3.400 m (+308 m)	2h 15'	N42 32.743 E1 33.040	From this point, the path becomes more demanding and continues straight through a Scots pine forest. Cross the Aspra river and continue walking until you arrive at a forest trail.	

PLACE	ALTIITUDE	DISTANCE ASCENT/DESCENT	TIME	COORDINATES	DESCRIPTION	
5 L'ESTALL PASS	1.924 m	3.960 m (+39 m)	2h 25'	N42 32.857 E1 32.998	After taking a few turns, the route passes over the L'Estall farm and leaves a path to the right that leads to the El Mallol fountain. Leave the trail to climb a few metres and arrive at the L'Estall pass. From here, you can enjoy a beautiful view of Casamanya peak.	
6 GOMÀ PASS PATH SIGN	1.911 m	4.090 m (-13 m)	2h 30'	N42 32.828 E1 32.926	Return to the trail. After walking for 5 minutes, you'll come to the wooden sign indicating the Gomà pass path, which marks the beginning of the return trip.	
7 SHADED PATH INTERSECTION	1.834 m	4.510 m (-77 m)	2h 45'	N42 32.791 E1 32.655	You'll pass by an iron chain and take a secondary trail until coming to an intersection on the right-hand side of the path.	
8 LA GONARDA PATH	1.387 m	5.990 m (-447 m)	3h 45'	N42 32.821 E1 31.808	Take the shaded path that forks off to the right, heading downhill. It's a steep descent through the forest of La Gonarda. After a long descent through the forest you'll reach a paved road. Turn right and keep walking until the end of the road. To your left you'll find the Camí de La Gonarda path.	
9 L'ALDOSA DE LA MASSANA	1.290 m	7.480 m (-99 m)	4h 10'	N42 32.621 E1 31.376	From here, the route follows the Camí de La Gonarda path until it reaches the town of L'Aldosa de la Massana.	



La Massana