

# 98 COLL DE JOU

WALKING IN ANDORRA



# 98

## DON'T MISS...

the visit to the Tamarro Caldes, located on the Fonts circuit.

## DID YOU KNOW...

the name of the Coll de Jou pass refers to the gentle but marked shape of a change of slope found on the Engordany plain.

## BEHIND THE NAME

**Coll de Jou:** relief evoking the curved shape of the yoke. It is in part a redundant duplication



*Sambucus nigra*



*Dry tobacco*



Plaça d'Engordany



Window and *estripagec* (metal bars with irregular lateral spikes placed at windows to stop anyone entering)

At total of 3.5 km long, this route is a simple outing around Engordany, ending at the Coll de Jou pass, the highest point, at 1285 m above sea level. From here, you can enjoy spectacular views of the parish and the entire valley.

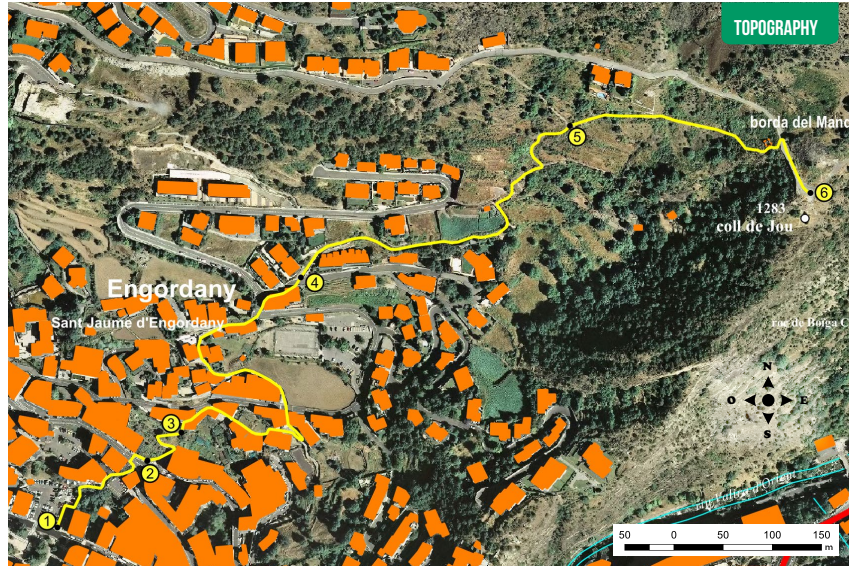
The main interest of the walk is the proximity of a natural place in the urban network of Escaldes-Engordany, and the panoramic view.

In addition to the views offered by the Coll, the walkway crosses old crops that are being reconlised by other vegetation.

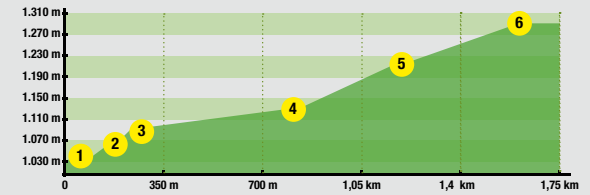
Due to its sunny, low-lying orientation, you can walk here all year round, but it's perhaps best enjoyed from May to September. The predominant views are of the urban centres of Andorra la Vella and Escaldes-Engordany, and it's not difficult to imagine the thickness of the ice in the last glaciers.

This area is home to a rare bird, the blue rock thrush (*Monticola solitarius*), as well as black redstart (*Phoenicurus ochruros*) and a hardy shrub: Phoenician juniper (*Juniperus phoenicea*).





## ROUTE PROFILE



## TECHNICAL INFORMATION

- 55 MIN
- 35 MIN
- +240 M
- 1.610 M

APPROXIMATE TIME

## ROUTE SIGNAGE

PLACE ALTITUDE	DISTANCE ASCENT/DESCENT	TIME	COORDINATES	DESCRIPTION
<b>1</b> <b>PARC DE LA MOLA</b> 1.035 m	-- (--)	--	N42 30.666 E1 32.357	The starting point is at Plaça del Parc de la Mola, in front of the Caldea thermal spa, in the parish of Escaldes-Engordany.
<b>2</b> <b>AVINGUDA DEL PESSEBRE</b> 1.060 m	188 m (+25 m)	5'	N42 30.711 E1 32.444	Cross the road, taking Camí de la Salita, the cobbled path found on the right-hand side of the car park, marked by a steep slope, until you get to Avinguda del Pessebre.
<b>3</b> <b>CROSSROADS</b> 1.075 m	249 m (+15 m)	10'	N42 30.729 E1 32.460	Cross Avinguda del Pessebre, then go along Camí de la Grau, where you'll come to a crossroads.

PLACE ALTITUDE	DISTANCE ASCENT/DESCENT	TIME	COORDINATES	DESCRIPTION
<b>4</b> <b>CAMÍ DE COLL DE JOU</b> 1.130 m	777 m (+55 m)	20'	N42 30.811 E1 32.553	Follow Camí de la Font on the right-hand side. A few metres away, you'll find Plaça d'Engordany. Continue through the old town to a crossroads, taking Camí de la Canya on the left. Cross the main road after few metres and continue along the cobbled Camí de la Canya. Climbing the steep slope, you'll reach the road again. Continue along the road and take the second street on the right. A few metres away, you'll find Camí de Coll de Jou.
<b>5</b> <b>CROSSROADS CAMÍ DE COLL DE JOU PIC DE PADERN</b> 1.220 m	1.270 m (+90 m)	40'	N42 30.896 E1 32.757	Continue up a steep slope to the crossroads of the Pic Padern and Coll de Jou paths.
<b>6</b> <b>COLL DE JOU</b> 1.285 m	1.610 m (+65 m)	55'	N42 30.853 E1 32.932	Take the path on the right, marked by a demanding slope. You'll then come to the ruins of Borda del Mandicó, followed by the end of the Coll de Jou main road. A few metres to the left is Coll de Jou.



escaldes-engordany