

19 BOSC DEL CAMPEÀ

DON'T MISS...

the museu d'Art Sacre ("Religious Art Museum"), located next to the parish church of Santa Eulàlia in Encamp. It houses a collection of liturgical objects coming from village churches, like silverwork, textiles and paper.

DID YOU KNOW...

in autumn, these forests are filled with mushrooms like such as the *Marasmius oreades*, the *Lactarius deliciosus*, grey knights, saffron milk-caps, chanterelles and even the prized penny bun.

BEHIND THE NAME

El Campeà springs: From the parasyllabic word *campadà*, a name for someone from Encamp, abbreviated as *encampadà*.

WALKING IN ANDORRA



El Campeà forest



Acanthus-leaved thistle
(*Carlina acanthifolia*)



Tibetan bridge



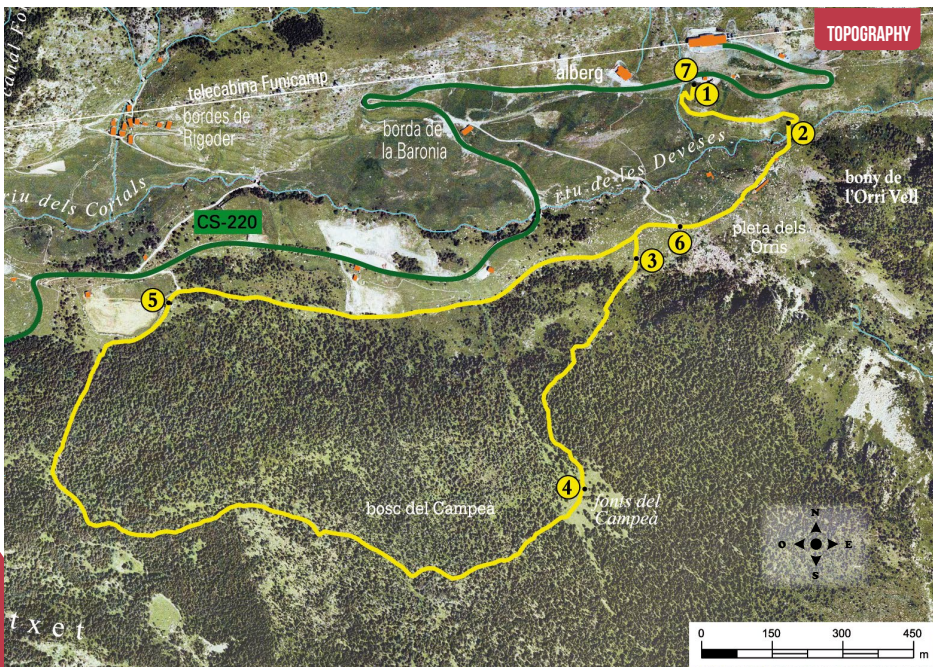
Wild turkey

This route through the large El Campeà forest will treat you to an authentic garden of flowers: gentians, pasqueflowers, snowbells, primroses and kingcups (*Caltha palustris*) can all be found growing around the springs, among other species

In this forest you can find the capercaillie (*Tetrao urogallus*), a bird very sensitive to human presence, and therefore protected. For this reason, it is important that you do not leave the marked path and that you try to hike without making much noise.

The capercaillie finds this forest to be a nice place to live: as a rather open mountain pine

forest (*Pinus uncinata*) with an undergrowth rich in bilberry (*Vaccinium myrtillus*) and alpenrose (*Rhododendron ferrugineum*), and to lesser degree patches of silver fir (*Abies alba*), it has steep enough slopes to help the bird to take flight in case of danger. Although it is a sedentary bird, it can make small flights from between 10 to 20 km. In winter, the capercaillie is found in areas between 1,800 and 2,200 meters above sea level. They nest on the ground in small holes covered with moss, twigs and feathers from the female. The nests are usually found at the foot of a conifer or some type of shelter, and are seemingly poorly camouflaged.



TECHNICAL INFORMATION

- 2H 20 MIN
- +295 M
- 295 M
- 5.270 M
- SI*
- APPROXIMATE TIME

ROUTE SIGNAGE

-
-
-
- WRONG DIRECTION



encamp
el pas de la casa

PLACE ALTITUDE	DISTANCE ASCENT/DESCENT	TIME	COORDINATES	DESCRIPTION	
1 CLIMBING WALL 2.050 m	-- (--)	--	N42 32.333 E1 37.836	Take the secondary Els Cortals road (CS-220). A little after the 8 km mark, you'll reach the climbing wall at Els Cortals.	
2 TIBETAN BRIDGE 2.040 m	379 m (-10 m)	10'	N42 32.290 E1 37.983	Take the path down to Les Deveses river. Continue on this small path, heading east, until you reach the Tibetan bridge.	
3 SIGN FOR EL CAMPEÀ FOREST 2.030 m	892 m (-10 m)	20'	N42 32.133 E1 37.749	You'll cross the Tibetan bridge and turn right on the path. After a 350-metre walk, you'll find a sign on the left signalling the El Campeà forest.	
4 EL CAMPEÀ SPRINGS 2.190 m	1.540 m (+160 m)	50'	N42 31.868 E1 37.672	Take the path to the left and you'll enter the El Campeà forest. Continue on the path through a patch of mountain pine until you exit into a beautiful clearing where you'll see the El Campeà springs.	



* This is a circular route. There is also an option to return directly from the El Campeà springs to the starting point.

PLACE ALTITUDE	DISTANCE ASCENT/DESCENT	TIME	COORDINATES	DESCRIPTION	
5 PICNIC AREA 1.915 m	3.340 m (-275 m)	1h 35'	N42 32.077 E1 37.024	You cross the meadow to the south and continue on until a sign indicates the path through the El Campeà forest. Follow this flat path through the woods. After a bit it will start to slope downwards. You'll pass by a path on the left, and continue going down until coming to a picnic area.	
6 PLETA DELS ORRIS 2.020 m	4.540 m (+105 m)	2h	N42 32.170 E1 37.816	Once in the picnic area take the flat path off to the right. After walking along a forest path for more than a kilometre, you'll come to Pleta dels Orris, where you'll find a wooden sign.	
7 CLIMBING WALL 2.050 m	5.270 m (+30 m)	2h 20'	N42 32.333 E1 37.836	From here on out the route goes back in the direction of the Tibetan bridge, and then takes you back to the starting point.	

ROUTE PROFILE

