

56 PIC DEL PORT VELL (COMAPEDROSA NATURE PARK)

WALKING IN ANDORRA



56

DON'T MISS...

the Chapel of Sant Andreu d'Arinsal, dating back to the 17th century, which was completely renovated in 1964 following a project by Catalan architect Cèsar Martinell. It still has a small Baroque-style wooden statue of Saint Andrew and a 17th century altarpiece devoted to Mare de Déu de les Neus (Our Lady of the Snow).

DID YOU KNOW...

the rock ptarmigans (*Lagopus muta*), whose legs are covered with feathers to prevent them from sinking into the snow—as if they were wearing snowshoes.

BEHIND THE NAME

Arinsal: formerly called Arensau, according to old documents, the name has also been connected with *arantzadi*, meaning “thorn patch”.



Sanfons



Phyteuma



Rock Ptarmigans

The Pic del Port Vell peak, which is nearly 2,700 metres high, is a painless excursion that boasts impressive views of the mountains of Arinsal, which borders the Spanish town of Alins, in the county of Pallars Sobirà.

The route runs along the Coll de la Botella mountain pass and passes by the sculpture “*Tempesta en una Tassa de Te*” (Storm in a Teacup), by Dennis Oppenheim. If you follow the road you'll reach the border with Spain.

The fauna and flora you'll find along the route is typically alpine. Starting at 2,300 metres, above the mountain pine (*Pinus uncinata*) tree line, begin the alpine grasslands and tundra. Conditions are so adverse, owing to the cold, the wind, the snow and the solar irradiance that trees are unable to grow there. The species that are able to survive in such an environment are bushes such as the common juniper

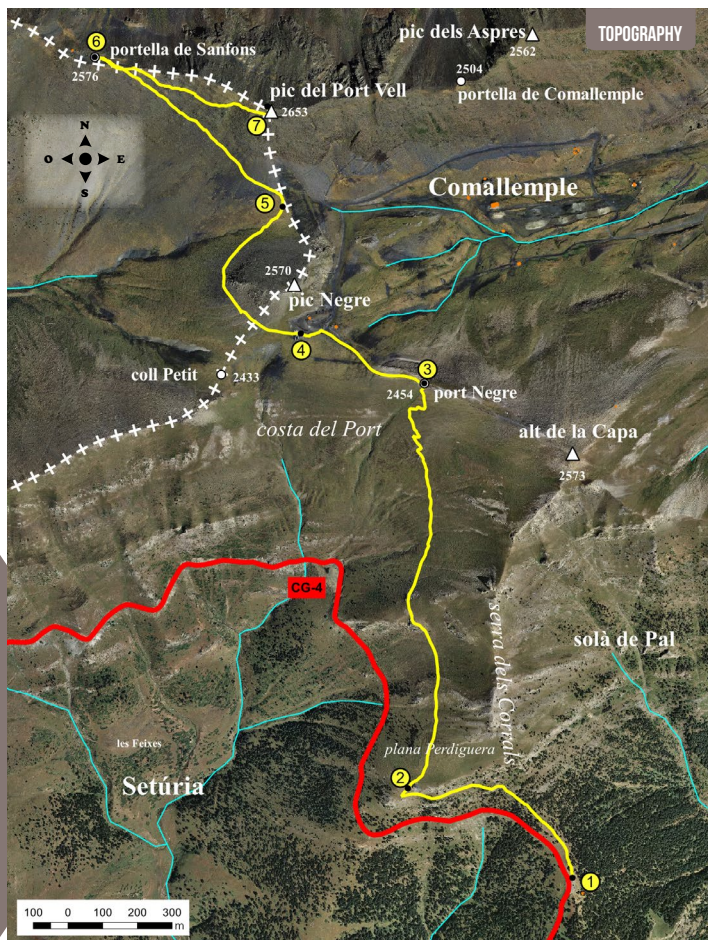
(*Juniperus communis nana*), the bog bilberry (*Vaccinium uliginosum*), the alpenrose (*Rhododendron ferrugineum*) and the common cottoneaster (*Cotoneaster integerrimus*).

In the highest areas there is still a large variety of plant species, including the typical blue-flowered *Phyteuma hemisphaericum*, the white flowered lady of the snows (*Phulsatilla vernalis*) and the *Ranunculus pyrenaicus*, the pink-flowered cushion pink (*Silene acaulis*) and the purple-flowered *Viola cenisia*.

The fauna that inhabits this high-altitude setting includes stoats (*Mustela erminea*) and rock ptarmigans (*Lagopus muta*), which change colour and turn entirely white in winter. You might also be able to spot red squirrels (*Sciurus vulgaris*), Eurasian jays (*Garrulus glandarius*), or even Pyrenean chamois (*Rupicapra rupicapra*).

LA MASSANA

56. PIC DEL PORT VELL



TECHNICAL INFORMATION

- 1H 45 MIN
- +565 M
- 34 M
- 4.460 M
- NO
- APPROXIMATE TIME

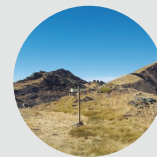
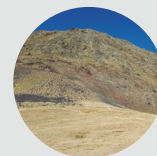
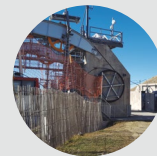
ROUTE SIGNAGE

-
-
- GRP
- WRONG DIRECTION

PLACE ALTITUDE	DISTANCE ASCENT/DESCENT	TIME	COORDINATES	DESCRIPTION
1 "STORM IN A TEACUP" SCULPTURE 2.115 m	-- (--)	--	N42 33.121 E1 27.262	From la Massana, take CG-4 towards Pal-Arinsal. At the roundabout in Erts, take the exit left towards Xixerella-Pal. Before you reach the Pal ski resort, take the exit towards Port de Cabús. After kilometre 13, you'll find a viewpoint with the interesting sculpture of the "Storm in a Teacup", by American artist Dennis Oppenheim.
2 CABLE CAR PILLAR 2.206 m	700 m (+91 m)	20'	N42 33.257 E1 26.913	Follow the GRP, which heads upward, parallel to the road. The path gains altitude until it reaches Plana Perdiguera.



PLACE ALTITUDE	DISTANCE ASCENT/DESCENT	TIME	COORDINATES	DESCRIPTION
3 PORT NEGRE 2.450 m	2.120 m (+244 m)	50'	N42 33.889 E1 26.938	From here on, the path heads northward, towards Costa de la Devesa, and is fairly level. Soon after it becomes much tougher. Go up the Costa de les Eroles hill until you reach Port Negre.
4 CABLE CAR TURNAROUND 2.487 m	2.540 m (+37 m)	1h	N42 33.964 E1 26.677	Take the trail to the left, following indications for the GRP, until you reach the cable-car turnaround.
5 PORT VELL 2.492 m	3.130 m (+30 m -34 m)	1h 10'	N42 34.161 E1 26.636	At this point you'll leave the GRP behind and take a path that goes around the Port Negre Peak along the Catalan side of the mountain. The path follows the contour of the mountain until it reaches Port Vell.
6 PORTELLA DE SANFONS 2.578 m	3.860 m (+86 m)	1h 30'	N42 34.391 E1 26.237	Once you reach Port Vell, rejoin the GRP, which heads upward towards La Solana del Port Vell. Turn left when you reach the ridge and follow the path to Portella de Sanfons.
7 PORT VELL PEAK 2.655 m	4.460 m (+77 m)	1h 45'	N42 34.317 E1 26.602	Go back a bit and take the path that passes under the ridge, eastward. You'll soon reach Pic del Port Vell (Port Vell Peak).



ROUTE PROFILE

