

60 CIRCULAR COLL DE TURER

DON'T MISS...

eating in a typical Andorran restaurant or at Coll de la Botella, a few metres from the start of the route.

DID YOU KNOW...

in winter, night outings are usually done with snowshoes or cross-country skis?

BEHIND THE NAME

Turer: name derived from alt, 'high', and similar, or from turo 'kind of pumice stone'.

WALKING IN ANDORRA



Sant Climent de Pal



Cows



Tempesta en una tassa de té (Storm in a Teacup)



Borda

This is a circular route that runs between the Coll de la Botella pass and the village of Pal in the parish of La Massana. The journey begins with the sculpture *Tempesta en una tassa de té* (Storm in a Teacup) by artist Denis Oppenheim.

The route has some aerial and quite technical sections, as well as some striking views, featuring steep ascents, ridge sections and intense descents. The path runs along the Costes de l'Alt to the Coll de Turer, where the culmination of the route has spectacular 360° views. The return is through a very steep forest to the small

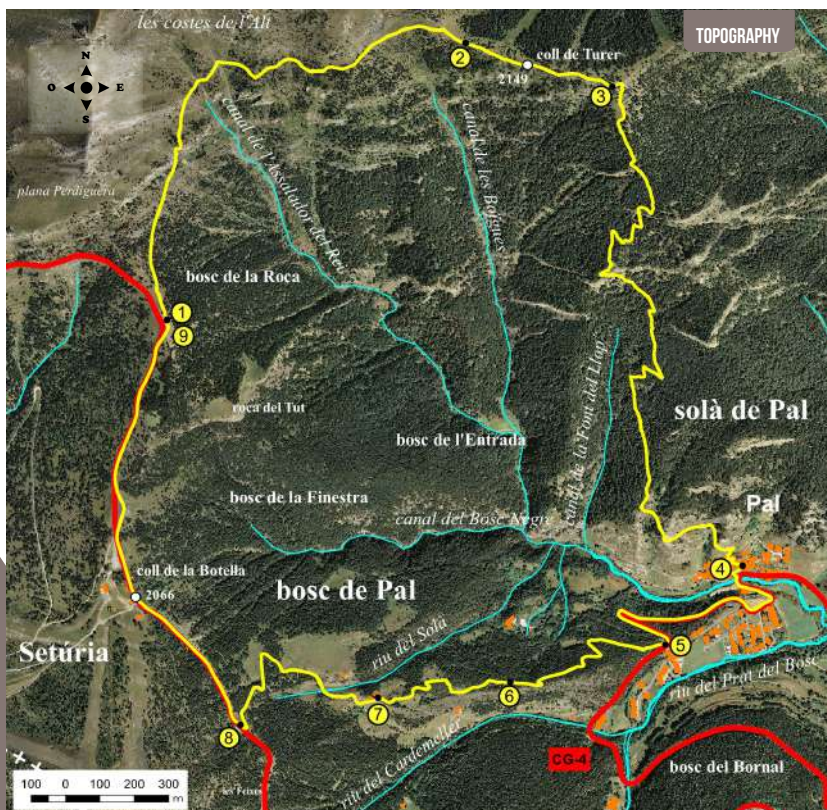
village of Pal, when you can visit the Romanesque church of Sant Climent, built between the 11th and 12th centuries and still retaining some of its original walls.

Pal is one of the best-preserved mountain villages in all of Andorra. It has also been part of a special protection plan since 1997. The return is along the Camí del Cardemeller, a path with a steep slope that takes you to the bordes (huts) of the same name, affording spectacular views.

60

LA MASSANA

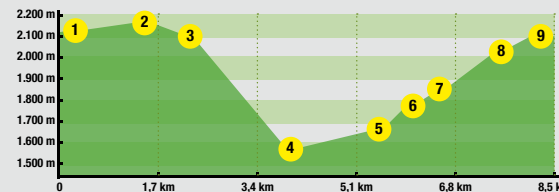
60. CIRCULAR COLL DE TURER



PLACE	DISTANCE	TIME	COORDINATES	DESCRIPTION
ALTITUDE	ASCENT/DESCENT			
1				
TEMPESTA EN UNA TASSA DE TE	-- (--)	--	N42 33.122 E1 27.263	The starting point of this route is Coll de la Botella. Take the CG4, in the direction of Pal. Cross the village of Pal and continue along the CG4 towards Port de Cabús. After kilometre 13, you'll find the sculpture <i>Tempesta en una tassa de te</i> (Storm in a Teacup), the work of the artist Denis Oppenheim. Take the CG4 towards Pal.
2				
COLL DE TURER	1.640 m (+105 m -55 m)	40'	N42 33.578 E1 27.892	Walk the first few metres of the path following the GRP signs and then turn right onto Camí del Coll de Turer. Take this public path that follows the outline of the mountain. This first section of the route doesn't have a huge amount of ascent or descent, but passes through sloping terrain until it reaches Coll de Turer.
3				
SIGNPOST	2.105 m (+15 m -25 m)	45'	N42 34.731 E1 29.182	Once in Coll de Turer, continue east along the ridge of the mountain to a signpost for Camí Coll de Turer.



ROUTE PROFILE



PLACE	DISTANCE	TIME	COORDINATES	DESCRIPTION
ALTITUDE	ASCENT/DESCENT			
4				
SANT CLIMENT DE PAL	4.500 m (-564 m)	2h	N42 32.752 E1 28.495	At this point, be careful, as the path skirts the wooden sign and then turns right towards the village of Pal. The path then descends through the forest of Obaga Sobirana. It continues through a very steep forest, where you'll have to tackle some technical sections of rock. After a long descent, you'll reach the old town of Pal and the church of Sant Climent de Pal.
5				
CAMÍ DEL CARDE-MELLER	5.362 m (+70 m -11 m)	2h 20'	N42 32.620 E1 28.326	Go down the cobbled street of Sant Climent to the main road. Then go up a section of the CG4 to the beginning of Camí del Cardemeller.
6				
INFORMA-TION PANEL	5.955 m (+115 m)	2h 45'	N42 32.560 E1 28.002	Take a small stretch of track and then turn off onto the path that goes up to the left towards Font del Bisbe. The trail climbs through the woods to reach an information panel.
7				
BORDES DEL CARDE-MELLER	6.418 m (+118 m)	3h 10'	N42 32.535 E1 27.727	Continue up Camí del Cardemeller towards Font del Bisbe. Continue up this path until you get to Bordes del Cardemeller.
8				
FONT DEL BISBE	7.141 m (+162 m)	3h 40'	N42 32.487 E1 27.420	From this point, continue up a wide path and, shortly afterwards, reach the main road, where you'll find the Font del Bisbe.
9				
TEMPESTA EN UNA TASSA DE TE	8.480 m (+70 m)	4h	N42 33.122 E1 27.263	Continue up the main road to the <i>Tempesta en una tassa de te</i> (Storm in a Teacup) sculpture again, the starting point and end of the route.



TECHNICAL INFORMATION

- ● ● ●
- 4H
- +655 M
-655 M
- 8.480 M
- ! APPROXIMATE TIME

ROUTE SIGNAGE

- ● ● ●
- ✘ WRONG DIRECTION



La Massana



PARC NATURAL
Comunal - Vall de
Comapedrosa