

85 CAMÍ DE SANT MARTÍ DE NAGOL

DON'T MISS...

Discovering the wineries of the parish.
Further information: www.agricultura.ad

DID YOU KNOW...

the original church was built with stones torn from the rock itself and joined with lime mortar.

BEHIND THE NAME

Nagol is the result of joining the preposition -en and the Latin word aquale, and means a pot of water and an irrigation channel.



English iris



Wild blackberry



Sant Serni de Nagol's lookout



Sant Martí de Nagol

This route starts in the village of Sant Julià de Lòria and climbs to the village of Nagol along Camí de Sant Martí. The path connects the village of Nagol with Sant Martí church and the meadow and the terraces next to this church. Coming out of the very north of the village of Nagol, it flanks the mountain side with a slight slope and goes over a pass in the middle. On either side of this pass, the path is cobbled; there are also some sections above a dry stone embankment. When it gets close to Sant Martí, it's cut by the rock.

Sant Martí de Nagol is an 11th-century Romanesque church declared a cultural asset. It stands out for its location embedded in a rock on the north side of the nave and with a cliff that falls on the south side. The front door is documented on 7 May 1048 in a donation to Santa Maria d'Urgell. It holds a strategic position dominating the entry of Vall de Sant Julià. In the 20th century, it was restored, as it was in ruins, with only the side walls and the apse preserved.

SANT JULIÀ DE LÒRIA

85. CAMÍ DE SANT MARTÍ DE NAGOL

TECHNICAL INFORMATION

-
- 1H 25 MIN
- + 223M
- 4.580 M

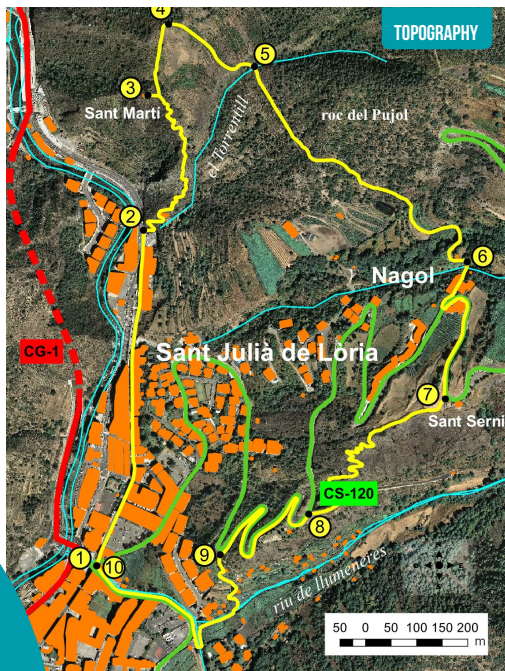
APPROXIMATE TIME

ROUTE SIGNAGE

-
- WRONG DIRECTION



Sant Julià de Lòria
portal d'Andorra



PLACE ALTITUDE	DISTANCE ASCENT/DESCENT	TIME	COORDINATES	DESCRIPTION
1 TOURIST INFORMATION OFFICE IN SANT JULIÀ DE LÒRIA 912 m	-- (--)	--	N42 28.006 E1 29.5559	The starting point for the route is in the centre of Sant Julià de Lòria, at the Tourist Information Office.
2 CAMÍ DE SANT MARTÍ DE NAGOL 924 m	762 m (+12 m)	8'	N42 28.347 E1 29.608	Take Avinguda Verge de Canolich north, practically until the end of the village, where you'll find Camí de Sant Martí de Nagol. Use the cobbled steps as a point of reference.
3 SANT MARTÍ DE NAGOL CHURCH 1.076 m	1.310 m (+144 m)	35'	N42 28.496 E1 29.63	Follow the stony path uphill to Sant Martí de Nagol church.
4 ENCREUAMENT CAMÍ DE LA FONT DE L'ARTIC 1.085 m	1.440 m (+13)	40'	N42 28.571 E1 29.646	Flattening out, after a few metres you'll come across Font de l'Artic water spring.

PLACE ALTITUDE	DISTANCE ASCENT/DESCENT	TIME	COORDINATES	DESCRIPTION
5 FONT FREDA 1.103 m	1.670 m (+20)	45'	N42 28.526 E1 29.769	Leave Camí de la Font de l'Artic behind and, without too much effort, you'll come to Font Freda.
6 VILLAGE OF NAGOL 1.103 m	2.420 m (+34 m -34 m)	50'	N42 28.322 E1 30.079	Flattening out, Camí de Nagol takes you between well-preserved dry stone walls to the village of Nagol.
7 SANT SERNI DE NAGOL CHURCH 1.130 m	2.860 m (+30 m)	55'	N42 28.177 E1 30.043	Follow the path to Nagol's manor house, a few metres from the main road. Continue up the main road for about 250 metres to Sant Serni de Nagol church.
8 CHILDREN'S PLAY-GROUND 1.026 m	2.860 m (-104 m)	1h 05'	N42 28.054 E1 29.854	Camí de Sant Serni takes you to the village of Sant Julià de Lòria. After a few metres, you'll find Mirador de Sant Serni. Continue downhill to a crossroads and stick to the path from Sant Serni to the main road, where you'll find a playground.
9 CAMÍ DE SANT CERNI DE NAGOL 987 m	3.990 m (-40 m)	1h 15'	N42 28.013 E1 29.733	Continue down the road for 500 m until you come to Camí de Sant Serni again.
10 SANT JULIÀ DE LÒRIA TOURIST INFORMATION OFFICE 912 m	4.580 m (-75 m)	1h 25'	N42 28.006 E1 29.559	Take the wide, cobbled path in the middle of small orchards until you come to the La Rabassa main road. Go 200 metres down the road to the Sant Julià de Lòria Tourist Information Office.

ROUTE PROFILE

