

18 CAMÍ DEL RIU BLANC (ENGOLASTERS LAKE)

DON'T MISS...

the electricity route organised by the museu de l'Electricitat ("Electricity museum"). It will let you in on all the secrets of Engolasters lake.

DID YOU KNOW...

the dike at Engolasters lake is 178 metres long and belongs to the Encamp parish.

BEHIND THE NAME

Engolasters: This word could come from the Provençal *estier*, meaning "canal" or "stream", and which originally comes from the Latin word *aestuarium*. It may also come from the Latin word *aquale*, meaning "pot of water", which would have been Romanised to give the sense of a "trickle" of water.



El Cresper path



Farm at El Cresper



Pink
(*Dianthus hyssopifolius*)



El Cresper path

In the parish of Encamp, you'll find Engolasters lake, fed by the Engolasters river, which itself is a tributary of the Valira river. Legend has it that there was a town full of unfaithful here that was flooded over by the waters. At night, witches met secretly here to bathe naked in the lake. Men from Engolasters would sneak out to spy upon these witches, all the while knowing that if they were caught they would be turned into a black cat. It is said that witches disappeared around the beginning of the 20th century, coinciding with the installation of the antennas for Ràdio Andorra and the construction of the FHASA hydroelectric dam, which opened in 1934.

To build the Engolasters dam, FHASA built a penstock, which starts in the lake and goes down to the hydroelectric plant (built along the CG-2). This penstock takes advantage of the largest of the three existing elevation drops in Andorra, and therefore is capable of producing more electricity. The penstock flows out of a 158-km² basin, with 27 belonging to the Madriu river and 10 to the Perafita river. The combined flows of the Valira and Madriu rivers join in Engolasters, where the water pressure is lowered via a 1,250-metre pipe connected to the hydroelectric plant.

ENCAMP

18. CAMÍ DEL RIU BLANC (ENGOLASTERS LAKE)

TECHNICAL INFORMATION



1H 15 MIN

45 MIN

+350 M

1.900 M

NO

! APPROXIMATE TIME

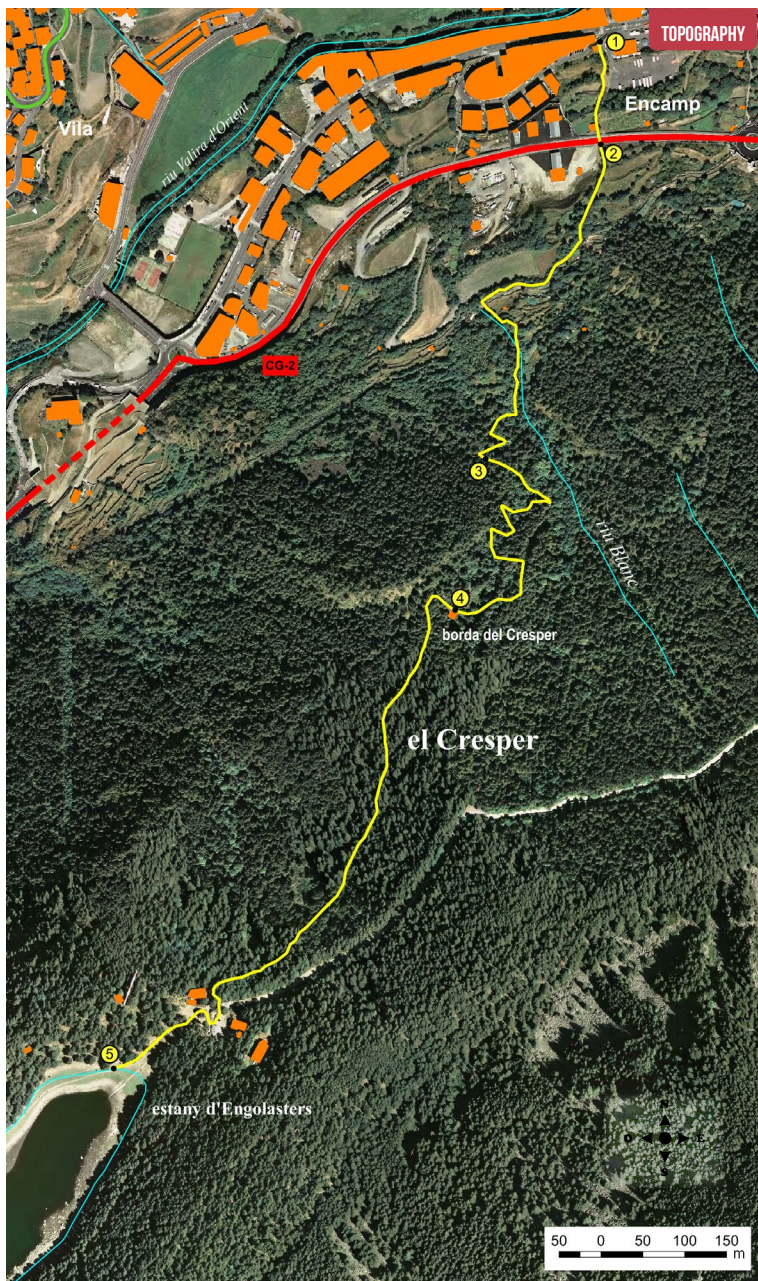
ROUTE SIGNAGE


GR 11

WRONG DIRECTION



encamp
el pas de la casa



PLACE ALTITUDE	DISTANCE ASCENT/DESCENT	TIME	COORDINATES	DESCRIPTION
1 STARTING POINT 1.250 m	-- (--)	--	N42 31.967 E1 34.654	This route begins in the village of Encamp, next to the terres Primeres car park and in front of the Museu Nacional de l'Automòbil ("National Automobile Museum"). Here you'll find a wooden sign indicating the beginning of the path to Engolasters lake and Blanc river. 
2 DETOUR SIGN IN ENCAMP 1.275 m	123 m (+5 m)	5'	N42 31.904 E1 34.655	Head southward along a paved path until you reach a road. Go past the detour sign for Encamp, and on the other side of the road you'll see a wooden sign that shows the path to follow. 
3 EL CRESPER INTERSECTION 1.410 m	647 m (+135 m)	30'	N42 31.698 E1 34.555	The path continues on the right past some gardens, all the while following the indications of the GR-11. You'll go over the Blanc river, and a bit further on you'll come to an intersection. 
4 FARM AT EL CRESPER 1.505 m	1.090 m (+95 m)	50'	N42 31.601 E1 34.531	Leave the El Cresper path on your right and continue on the left-hand side in the direction of Engolasters lake. The path climbs, following the GR-11. Keep going up until you come to a fork in the road. Leave the El Ferer de l'Olla path on the left, and in no time you'll come to the farm at El Cresper. 
5 ENGOLASTERS LAKE 1.620 m	1.900 m (+115 m)	1h 15'	N42 31.302 E1 34.238	From this point, the forest opens up a bit and you'll keep ascending through a Scots pine forest until you finally reach the end of the path. Now you'll take the path that descends to the right, which leads you to Engolasters lake. 

ROUTE PROFILE

