

# 78 CAMÍ DE LA SENYORETA



## DON'T MISS...

the chapel of Sant Esteve de Juberrí, a Romanesque building with an almost underground nave and apse. The doorway and one window face the south, and the bell tower is in the west, with one oculus and one window. It has all the elements characteristic of Romanesque architecture, including a burial crypt underground. Its walls are coated with clay from the same place that supplied the lime.

## DID YOU KNOW...

Legends often conceal some historical truth. The "senyoreta" ("young woman") can be found petrified in a 'famous' stone in the middle of the forest between Auvinyà and Juberrí.

## BEHIND THE NAME

**La senyoreta:** From the Latin word *seniore*, meaning "elder, person of authority", which is behind the Spanish word *señor* and its derivations. Here, it is a place name referring to a maiden with dominion. It comes from a nice Lauredian legend about a young lady who, despite the different versions, is always very beautiful.



Dry stone steps



White mountain saxifrage  
(*Saxifraga paniculata*)



Tolse



Path

This route begins at the exit of Sant Julià de Lòria heading toward Spain. A wooden sign marks the starting point. In the cracks in the stone walls near the path, you may be able to spot a very special fleshy plant with toothed leaves, white mountain saxifrage (*Saxifraga paniculata*).

You'll see rather varied vegetation along the route, dominated by birch (*Betula pendula*) and cherry trees (*Prunus avium*). However, as you ascend, you'll start to notice other species. Among the largest of these are the holm oak (*Quercus rotundifolia*) and downy oak (*Quercus pubescens*). Even higher up, you'll be able to see a species that is quite rare in

Andorra, the chestnut (*Castanea sativa*), a deciduous tree with rather large and shiny serrated leaves. Going up the path, you'll enter a Scots pine forest (*Pinus sylvestris*) with boxwood (*Buxus sempervirens*) and, higher up, juniper (*Juniperus communis*) and gorse (*Genista scorpius*). The holm and downy oaks break up the hegemony of the pines.

The most prominent animals that abound in this area include the wood mouse (*Apodemus sylvaticus*) and the ever-friendly squirrel (*Sciurus vulgaris*). The rummagings of wild boars (*Sus scrofa*) betray their presence, as they tend to search for food off the forest floor.



# SANT JULIÀ DE LÒRIA

## 78. CAMÍ DE LA SENYORETA

### TECHNICAL INFORMATION



1H 20 MIN

45 MIN

+370 M

1.880 M

NO\*

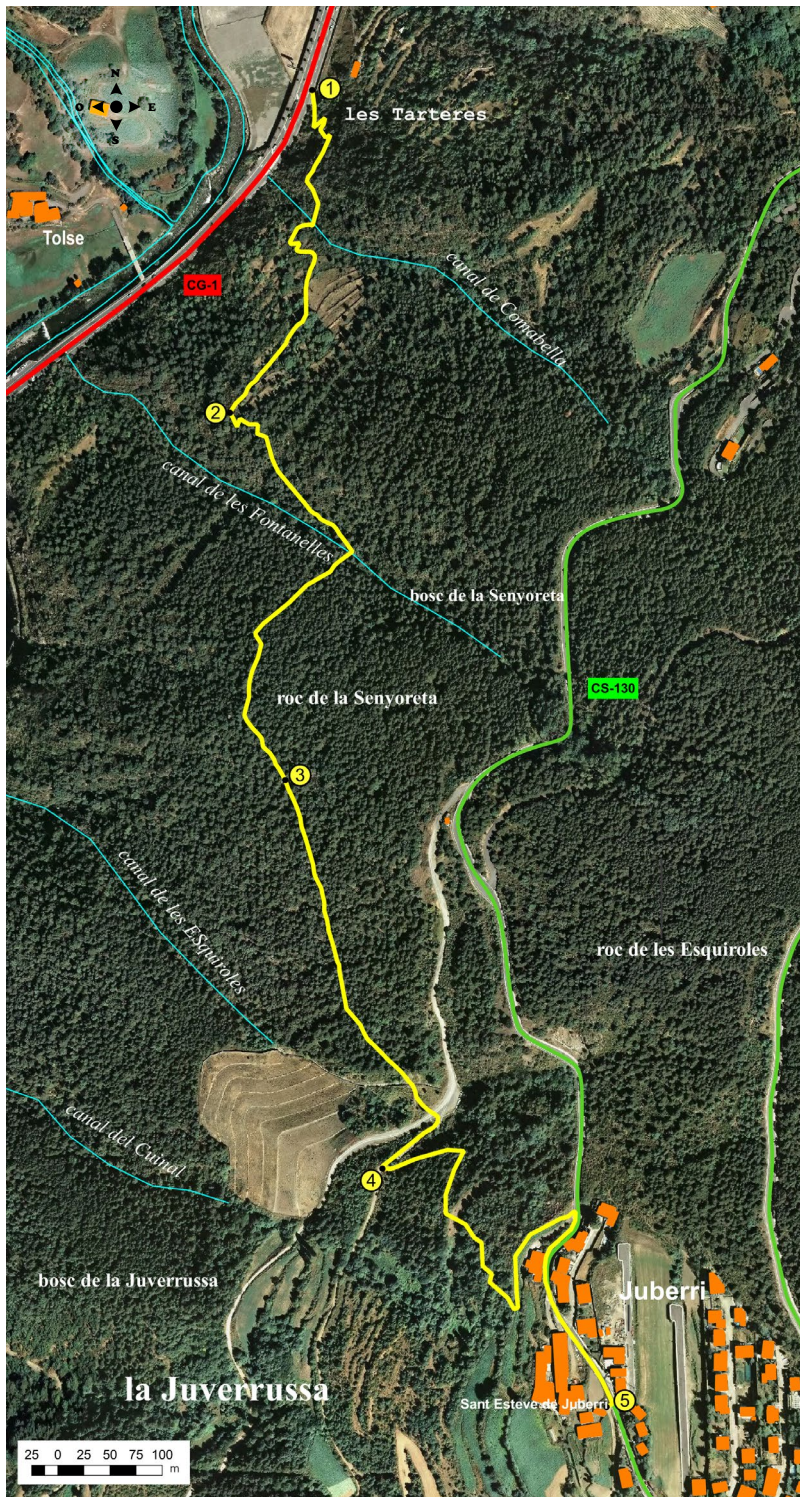
! APPROXIMATE TIME

### ROUTE SIGNAGE



GRP  
WRONG  
DIRECTION

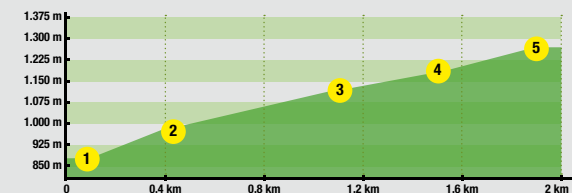
GRP  
WRONG  
DIRECTION



PLACE	DISTANCE	TIME	COORDINATES	DESCRIPTION
ALTITUDE	ASCENT/DESCENT			
<b>1</b> STARTING POINT -CG1 KM 8 890 m	-- (--)	--	N42 27.093 E1 29.191	To reach the starting point, take the CG-1 road from Sant Julià de Lòria. The trail begins a few metres below the Riberala area (supermarkets and petrol station area).
<b>2</b> TOLSE VIEWPOINT 985 m	520 m (+95 m)	15'	N42 26.928 E1 29.139	The trail gains altitude, twisting and turning through a Mediterranean forest that doesn't receive many visitors in the valleys of Andorra. At a small shelf under some terraces, you'll be able to enjoy the view over Tolse farm and its fields.
<b>3</b> RIBEROLA INTERSECTION 1.120 m	1.010 m (+135 m)	40'	N42 26.739 E1 29.174	The path climbs comfortably. After crossing the Les Fontanelles canal, it levels until you come to the Riberala intersection.
<b>4</b> LA JUBERUSSA PATH 1.185 m	1.540 m (+65 m)	55'	N42 26.534 E1 29.253	The path will continue level through a Scots pine forest. You'll ascend past some meadows and cross the Les Esquiroles canal over a small bridge. Soon you'll arrive at the La Juberrussa path, follow a few metres upward and turn to the right onto a fairly flat trail. A turn to the left will situate the route within the forest again.
<b>5</b> JUBERRI 1.260 m	1.880 m (+75 m)	1h 20'	N42 26.249 E1 29.246	Continue through the forest and pass through some terraces that lead to the town of Juberrí.

\*You can return by following the same route, or by providing for several vehicles and leaving one in Juberrí beforehand.

### ROUTE PROFILE



Sant  
Julià  
de  
LÒRIA  
portal d'Andorra