

26 L'ALT DEL GRIU

DON'T MISS...

a visit to the Casa de la Vall, the headquarters for the Consell General (Andorran Parliament) and the Old Hall of Justice. Interesting fact: it is the smallest parliament in Europe.

DID YOU KNOW...

that in 1419 the Consell de la Terra was created as the first form of parliament, with the aim of solving local disputes.

BEHIND THE NAME

Alt del Griu: *Griu* ("griffin") is the popular name for a mythical animal that is half-lion and half-eagle. It is a symbol of vigilance and protection. In the arts, it appears with the head and wings of an eagle and the body of a lion. **Etymology:** From the Latin *grifus*. The peak of the mountain vaguely looks like the head of a bird of prey.

WALKING IN ANDORRA



Chamois



Esvèrtia
(*Swertia perennis*)



Digitalis groga
(*Digitalis lutea*)



Tora blava
(*Aconitum napellus*)

The natural landscape of the entire Ensagents valley alternates between open areas and more closed, intimate ones, which are humid and boast a large variety of flowers.

The Ensagents lakes are the result of the deep tracks left over from the ice age period. They form a wild corner in the high mountains and are gorgeous.

The 360-degree panoramic view from a top of Alt del Griu peak is one of the widest in the country. This is a perfect balcony for gazing over the geography of Andorra.

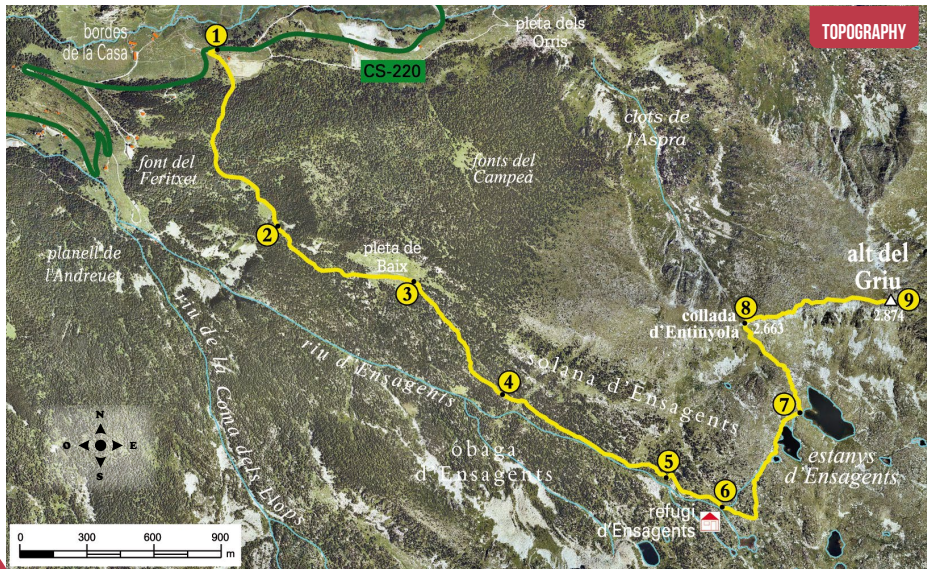
Leaving the farm at El Tresà (CS-220, km

6.2) follow the Ensagents path that takes you through the valley quite easily. You'll pass by the Baix grazing area and continue ascending along the sunny side of Ensagents where, after a rocky bit, you'll arrive at the Ensagents refuge.

At this point, the path rises northward to the Ensagents lakes, from where you will go to Entinyola pass (2,663 m) to the northwest. Once on the pass, you'll only have to follow it until the Alt del Griu.

You can return by following the same route, though there are alternative descents through the El Campeà forest and the L'Aspra pits.

26



TOPOGRAPHY

TECHNICAL INFORMATION

- 3H 40 MIN
- 2H 45 MIN
- +985 M
- 5.960 M
- NO
- APPROXIMATE TIME

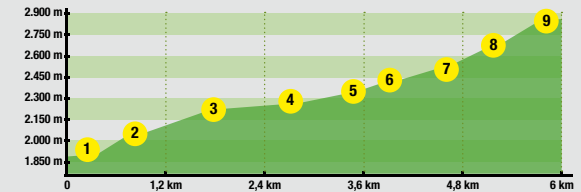
ROUTE SIGNAGE

- LANDMARKS
- WRONG DIRECTION
- USE OF COMPASS AND MAP HIGHLY RECOMMENDED



PLACE	ALTITUDE	DISTANCE ASCENT/DESCENT	TIME	COORDINATES	DESCRIPTION
1 ELS CORTALS D'ENCAMP	1885 m	-- (--)	--	N42 32.107 E1 36.860	The route starts at the Funicamp roundabout, in the village of Encamp. First, take the Els Cortals road (CS-220). At the 6.2 km mark, there will be a path that leads up to the right. A few metres on, there is a wooden sign with different hikes to choose from.
2 ECOMA DELS LLOPS AND ENSAGENTS PATH INTERSECTION	2.055 m	1.090 m (+170 m)	30'	N42 31.682 E1 37.063	Right away, you'll pass by a farm. As you hike up a rather steep path, you'll enter the El Campeà forest. You'll quickly come to a dry rock wall and, a little further on, the coma dels Llops intersection.
3 ENSAGENTS REFUGE PATH AND THE PEDRUSQUES PATH INTERSECTION	2.205 m	1.810 m (+150 m)	1h	N42 31.551 E1 37.509	The path continues heading to the southeast, with granite blocks in the forest. Next, you'll go by the Baix grazing area and see a wooden information panel pointing the way to the Ensagents refuge and Pedrusques path, as well as to the Els Aspres and Alt del Griu peaks.
4 CLARIANA	2.250 m	2.530 m (+45 m)	1h 15'	N42 31.281 E1 37.801	We have to take the path of the Ensagents refuge, marked with yellow dots, which goes into the forest.

ROUTE PROFILE



PLACE	ALTITUDE	DISTANCE ASCENT/DESCENT	TIME	COORDINATES	DESCRIPTION
5 ROCKY AREA	2.345 m	3.420 m (+95 m)	1h 30'	N42 31.084 E1 38.338	You'll pass by some granite walls in the forest. Next, the path climbs softly along the Ensagents river until you reach a rocky area with some large granite blocks.
6 ENSAGENTS REFUGE	2.425 m	3.760 m (+80 m)	1h 45'	N42 31.014 E1 38.521	Continue along a steeper path on the left and go past a little scree. Further up, you'll enter the cosy Ensagents refuge, which is well equipped (with bunk beds and a wood stove) and has capacity for 8 people.
7 ENSAGENTS LAKE	2.550 m	4.530 m (+125 m)	2h 30'	N42 31.243 E1 38.772	Starting from the refuge, the path is not marked with yellow dots, so keep the rock landmarks in mind. Continue ascending eastward until you come to a group of pine trees where you'll need to turn left, heading north. A little further ahead, go up the bank of the river until the first lake and then the second lake, which is the largest of the Ensagents lakes.
8 ENTINYOLA PASS	2.665 m	5.150 m (+115 m)	3h	N42 31.458 E1 38.590	From the lake, the path heads northwest. As you follow the landmarks, you'll quickly gain altitude. The last stretch is the steepest part of the path that takes you to Entinyola pass, where there is a spectacular view over Pessons cirque.
9 ALT DEL GRIU	2.870 m	5.960 m (+205 m)	3h 40'	N42 31.518 E1 39.067	Now you'll have to go up the pass, which is actually not so difficult. On the first stretch, you'll climb through some alpine meadows. After a rocky area, you'll need to head a bit to the left. Before reaching the peak, the slope lessens. The main peak is on your right in the middle of a rocky area. Enjoy the spectacular, 360-degree view of Andorra.