

# 08 CASAMANYA PEAK

HIKING IN ANDORRA



# 08

## DON'T MISS...

the 6 via ferratas available in Canillo, with different levels of difficulty.

## DID YOU KNOW?

the sheep dog competition is held the last Sunday of July in Planells de Mereig.

## TOPONYMY

**Casamanya:** From the Latin *casa*, "cabin" and *magna* "very large". A place of idol worship, it was probably the centre of prehistoric, pagan Andorra.



Bruna d'Andorra  
("Brown Swiss") livestock



Saxifrage  
(*Saxifraga media*)



Mountain cornflower  
(*Centaurea montana*)



Casamanya path

Casamanya peak rises between the parishes of Ordino and Canillo. It is one of the most common climbs in Andorra because of its exceptional location right in the middle of the country. At 2,740 metres, this mountain provides unique views of the whole country.

To reach the point of departure, take the Ordino pass road until the top. Then, a path marked with a wooden sign will point you to the beginning of the route.

The recommended time for observing flora and fauna along this route is at the end of spring and the summer. The ascent can also be made in winter, provided that you take mountain skis or snow shoes.

In the first part of the path, you'll cross a large group of mountain pines. Beside the path,

you'll be able to see herbaceous plants such as the fringed pink (*Dianthus monspessulanus*) or yellow monkshood (*Aconitum pyrenaicum*), the latter of which is poisonous. The mineralogical composition of the surroundings is fascinating: there are limestone rocks sculpted by the wind, which promote the presence of calcareous alpine flora, and immense flanks that will tempt you to return with snowshoes in the winter. In the highest reaches, you'll find the most characteristic species of these chalky environments such as saxifrage (*Saxifraga media*), which is endemic to the Pyrenees.

At the summit, you may spot griffon vultures (*Gyps fulvus*) or a bearded vulture (*Gypaetus barbatus*), which take advantage of the mountain's thermal winds to gain altitude.

# CANILLO

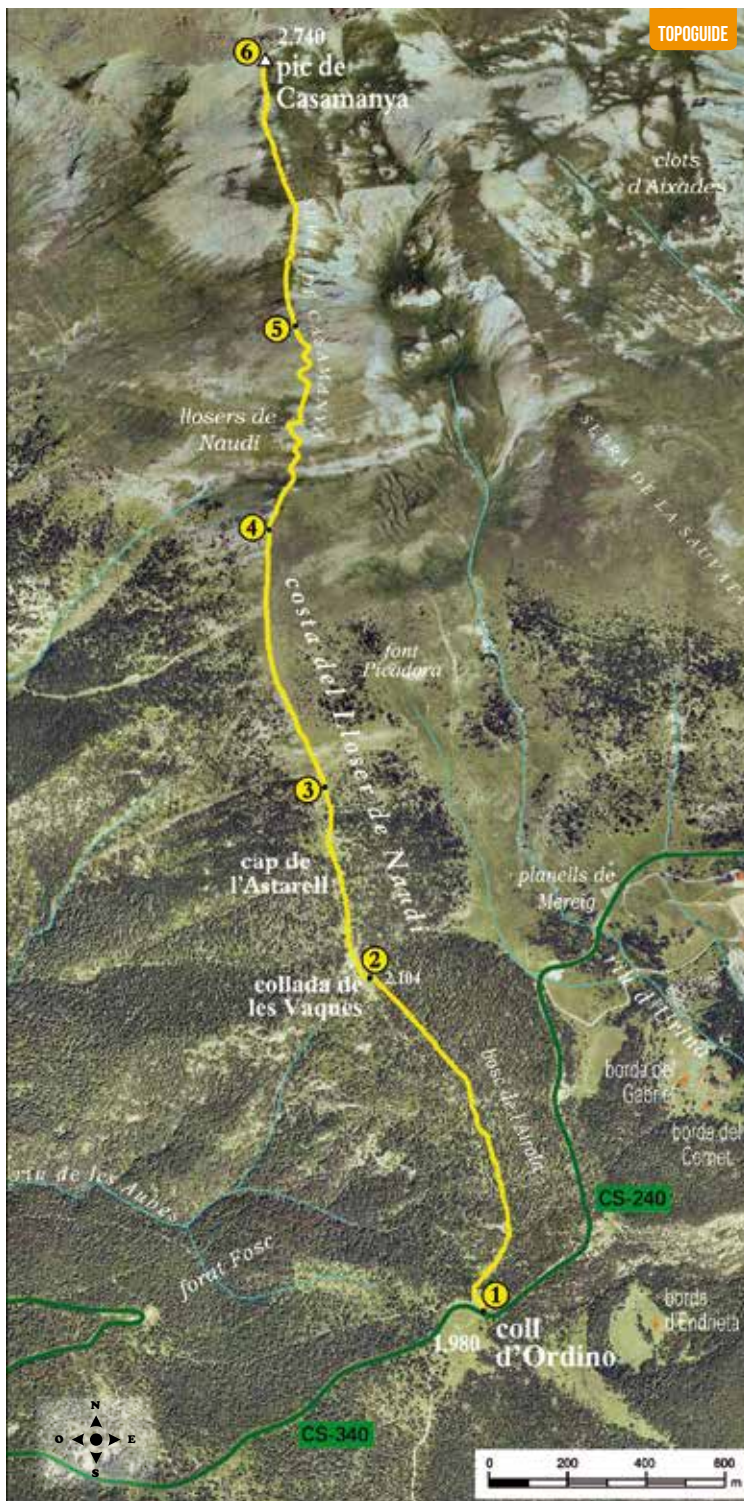
## 08. CASAMANYA PEAK

### DATA SHEET

- ● ● ●
- 2H 45 MIN
- 1H 45 MIN
- +750 M
- 3.750 M
- NO
- APPROXIMATE WALKING TIMES

### ROUTE SIGNPOSTING

- ● ●
- WRONG WAY



TOPOGUIDE

LOCATION	DISTANCE DROP	TIME	COORDINATES	DESCRIPTION
<b>1</b> <b>ORDINO PASS</b> 1.985 m	-- (--)	--	N42 33.361 E1 34.354	The starting point for this route is Ordino pass, a central point in Andorra's geography, with 360-degree views.
<b>2</b> <b>LES VAQUES PASS</b> 2.105 m	1.070 m (+120 m)	30'	N42 33.817 E1 34.138	The path begins heading north within the Airola forest up a pronounced climb that soon gives way to level ground until you reach Les Vaques pass.
<b>3</b> <b>HEAD OF THE ASTARELL</b> 2.170 m	1.600 m (+65 m)	50'	N42 34.078 E1 34.052	After passing by Les Vaques pass, you'll enter the mountain pine forest again, following the yellow dots along a gentle incline, and arrive at another clearing and the head of the Astarell.
<b>4</b> <b>LLOSERS DE NAUDÍ</b> 2.325 m	2.310 m (+155 m)	1h 20'	N42 34.431 E1 33.944	Next you'll leave the forest and the last isolated pines. From here until the summit, the views are magnificent. The slope becomes more pronounced and you'll gain altitude quickly until you reach the Llosers de Naudi.
<b>5</b> <b>SMALL SHELF</b> 2.545 m	2.980 m (+220 m)	2h	N42 34.711 E1 33.990	From this point and for the next 200 metres of difference in elevation, the path climbs up the sierra in a rather demanding stretch until you reach a small shelf, where you'll see Casamanya peak.
<b>6</b> <b>CASAMANYA PEAK</b> 2.735 m	3.750 m (+190 m)	2h 45'	N42 35.076 E1 33.929	At the final part of the path, continue heading north so you can see the peak at all times. Once at the peak, the views are spectacular: to the north is Estanyó peak and La Serrera peak; to the southeast is the Griu highlands; to the southwest is Carroi peak; and to the west is Comapedrosa peak, among others.

