

10 THE QUEROL AND SALAMANDRES PONDS

HIKING IN ANDORRA



DON'T MISS...

the Roc del Quer viewpoint, which is just a few kilometres from this route and boasts an extraordinary view of the parish of Canillo.

DID YOU KNOW?

Canillo is the first parish in Andorra by protocol order, and although well known for its tourism, it has an even stronger livestock and agricultural background, which allows us to admire its magnificent landscapes, perfectly preserved by the well-balanced use of the land by mankind over centuries.

TOPONYMY

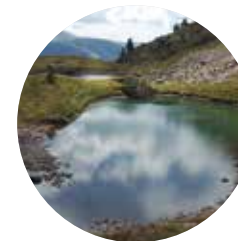
Soldeu: its name reminds some people of the place names *Solduga* and *Cardedeu*, but it would appear to be a compound name: *Sol d'Eu*.



Whinchat



View along the route



Salamandres Ponds



View along the route

The route leading to Lake Querol and the Salamandres ponds is easy and highly recommended for outings with family and friends. Hikers will get the chance to discover these glacial lakes, and pass by old *orris* (dystone huts and enclosures).

They're located in the cold, silent Ransol Valley. As you approach them, you'll find yourself amidst a forest comprised almost entirely of mountain pines (*Pinus uncinata*), with but a few scattered deciduous trees such as silver birches (*Betula pendula*), aspens (*Populus tremula*) and goat willows (*Salix caprea*). It also boasts a spectacular view of the Incles Valley, in the parish of Canillo.

In terms of the area's fauna, wild rosebushes (*Rosa sp.*) and hazels (*Corylus avellana*) serve as refuge to a wide range of forest creatures, which feed and make their nests in the forest and neighbouring fields. Red-backed shrikes (*Lanius collurio*), yellowhammers (*Emberiza citrinella*) and whinchats (*Saxicola rubetra*) are the species of birds most commonly found in this area. If you're quiet, you might even get to see a few other small animals such as wood mice (*Apodemus sylvaticus*) or common wall lizards (*Podarcis muralis*).

10

CANILLO

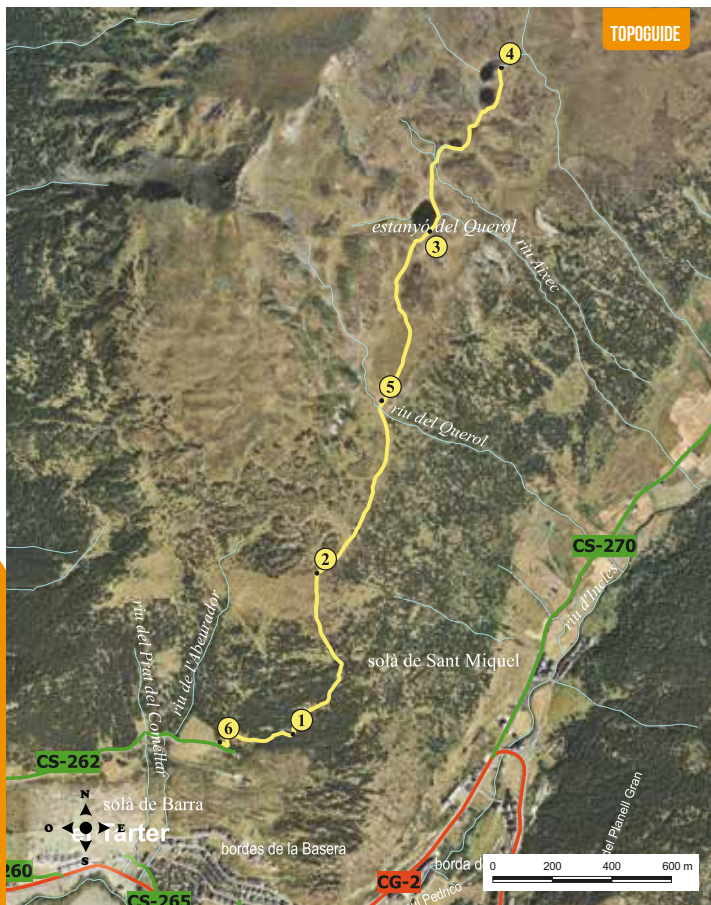
10 THE QUEROL AND SALAMANDRES PONDS

DATA SHEET

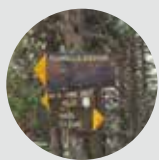
- ● ● ●
- 1H 30 MIN
- 1H
- +400 M
- 400 M
- 3.000 M
- NO
- APPROXIMATE WALKING TIMES

ROUTE SIGNPOSTING

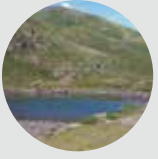
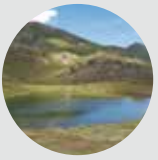
- ● ●
- WRONG WAY



LOCATION	DISTANCE DROP	TIME	COORDINATES	DESCRIPTION
1 PATH START SIGN 1.943 m	-- (--)	--	N42 35.045 E1 39.127	Take the CG-2 towards Canillo–France. Pass the town of Canillo and at kilometre 14, turn left at the roundabout towards Ransol. Follow CS-260 until you reach Ransol. At the crossroads, turn right, in the direction of La Coma de Ransol. After 2 kilometres, turn right and head towards Entor. Follow this road until the tarmac ends, at which point you'll find a signpost indicating the start of the route.
2 CROSSROAD 2.005 m	300 m (+62 m)	15'	N42 35.061 E1 39.307	The road climbs eastward for 300 metres among a forest made up of mountain pines, until it reaches a crossroad.



LOCATION	DISTANCE DROP	TIME	COORDINATES	DESCRIPTION
3 SIGNPOST 2.140 m	1.000 m (+135 m)	40'	N42 35.353 E1 39.362	Take the path leading to the left and follow signs for the Querol and Salamandres ponds. At this point the climb becomes steeper. It passes through the forest of Entor until it reaches a terrace with a view. Keep walking up the meadow until you reach the next signpost.
4 PLETA DEL QUEROL 2.180 m	1.600 m (+40 m)	50'	N42 35.667 E1 39.518	Head toward the right, in the direction of the Querol pond. The route continues north-east, on level terrain, for 600 metres, until it reaches the Pleta del Querol grazing area.
5 QUEROL POND 2.303 m	2.980 m (+123 m)	1h 15'	N42 35.976 E1 39.632	Walk past the plain and the picturesque little cabin that you'll find to your left and follow the route northward. The path becomes steeper here as it climbs a small hill. At the top you'll find the Querol pond.
6 SALAMANDRES PONDS 2.343 m	3.000 m (+40 m)	1h 30'	N42 36.274 E1 39.805	Circle around the right side of the lake and keep climbing north until you reach the charming Salamandres ponds.



ROUTE PROFILE

