

42 ESTANY DE L'ESBALÇAT

DON'T MISS...

the Casa Areny-Plandolit Museum. This house belonged to one of Andorra's most distinguished families. Their importance in the social, political and financial spheres cannot be understated.

DID YOU KNOW...

Between the 17th century and the first third of the 19th century, the Areny family was one of the most important families in the Valleys of Andorra, owning a quarter of all privately-owned land in the parish of Ordino. The family's social status is clearly reflected by their library. The oldest document is a treaty on canon law, printed in 1522 and titled *Opera Fellini, Secunda Pars*.

BEHIND THE NAME

Esbalçat: is the past participle of the verb *esbalçar*. Along with the *es* prefix (article) we find the noun *balç*, which comes from the Latin word *balteu*, meaning "ravine".

WALKING IN ANDORRA



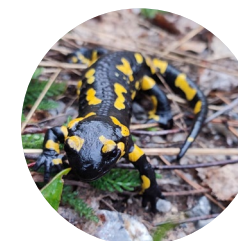
Esbalçat pond



Ordino-Arcalis



View of the Peak of Font Blanca



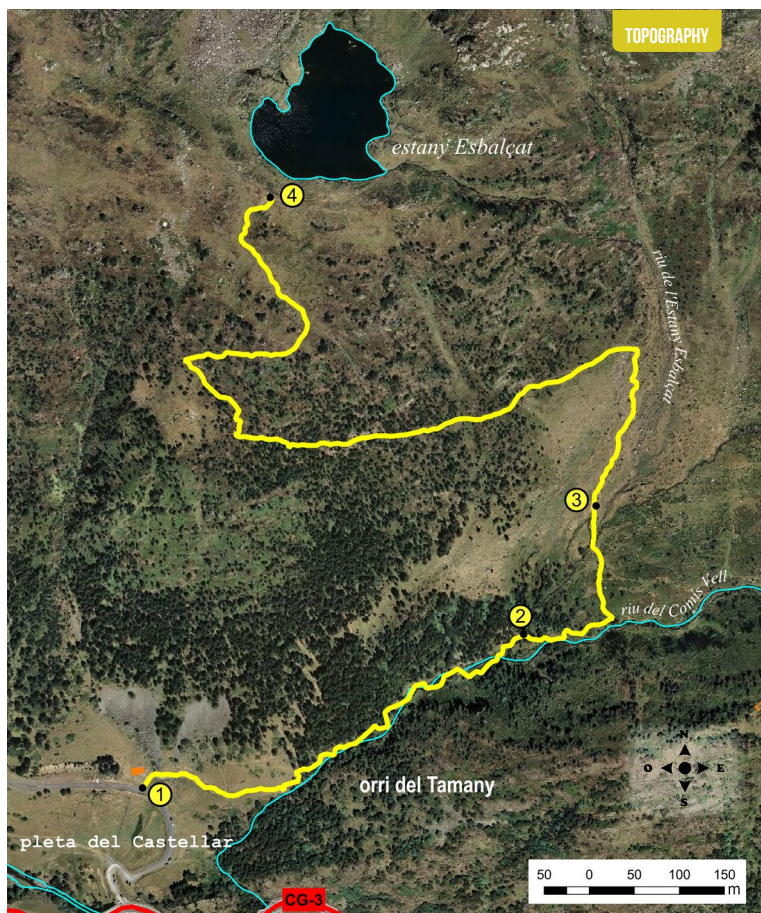
Salamander

This itinerary is in the north of the Principality of Andorra, near the Ordino-Arcalis ski resort. Although the route passes through high-mountain terrain, it's an easy walk and a perfect outing for the whole family. During the entire length of the route you'll have spectacular views of the peaks of Font Blanca (2,903 m), La Serrera (2,913 m), La Cabaneta (2,864 m) and L'Estanyó (2,915 m).

The parish of Ordino, which is in the northern end of Andorra, is built alongside the River Valira del Nord, which is the product of the confluence of the rivers Tristaina and Rialb. The main river, which is the central axis of the parish, whose source is at Coma del Forat, more specifically, the

ponds of Tristaina, which is the country's most famous group of ponds.

The vegetation around Ordino is majestic: there are large expanses of conifer forests and small forests of deciduous trees. The area that this route passes through, nonetheless, is mostly earth-coloured. At first glance it appears devoid of life, but in reality, it's full of all kinds of more subtle biological wonders. Siliceous Pyrenean grasslands such as *Festuca eskia*, *Festuca supina* and *Carex curvula* are a common sight all along the route. There are also several species of small flowers including Pyrenean gentians (*Gentiana pirenai-ca*) and Iberian sheep's bit (*Jasione crispa*).




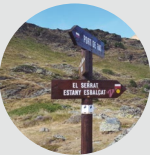
TECHNICAL INFORMATION

- ● ● ●
- 1H 15 MIN
- 1H
- +220 M
- 115 M
- 2.670 M
- NO
- APPROXIMATE TIME


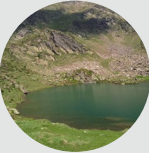
ROUTE SIGNAGE



GRP

PLACE	DISTANCE	TIME	COORDINATES	DESCRIPTION
ALTITUDE	ASCENT/DESCENT			
1 CABANES DE LA PLETA DEL CASTELLAR 1.865 m	-- (-)	--	N42 37.996 E1 30.688	To get to the starting point from Andorra la Vella, take the CG-3 road towards Ordino-Arcalis until Km 20, 500 metres. Right on the Castellar bridge is a forest trail and an information diagram with the different routes you can follow. Follow the old road for about 200 metres to the two stone huts, where you will find an information panel and the start of the Comins Vell trail. 
2 CASCARA DEL RIU DEL COMINS VELL SEGON PONT DE FUSTA 1.995 m	253 m (+119 m)	20'	N42 38.090 E1 30.996	The Comins Vell trail continues parallel to the dry stone wall until you reach the Comins Vell river. Parallel to the river, climb higher until you come to a first wooden bridge. Do not cross it, continue to climb until you reach a second bridge and a lovely waterfall. 



PLACE	DISTANCE	TIME	COORDINATES	DESCRIPTION
ALTITUDE	ASCENT/DESCENT			
3 ENCREUAMENT CAMÍ DE L'ESBALÇAT 2.033 m	510 m (+42 m)	30'	N42 38.167 E1 31.053	Cross the wooden bridge: a few metres higher you will see another, smaller waterfall. Then move away from the river. Leaving behind the black pine forest, climb until you reach an esplanade a few metres away, at the crossroads with the Esbalçat trail. 
4 ESTANY DE L'ESBALÇAT 2.295 m	1.790 m (+252 m)	1h 30'	N42 38.350 E1 30.786	The Esbalçat Pond trail: continue north for a hundred metres, then turn left and take a long diagonal path under the crag. Before reaching the pond, the path will be marked by a steep slope. By making detours, you will reach the isolated Esbalçat pond. 

ROUTE PROFILE

