

# 96 ITINERARI COLL JOVELL

WALKING IN ANDORRA



# 96

## DON'T MISS...

A visit to the Electricity Museum which will prove to be a unique experience. A voyage in time from the invention of electricity to the importance it has had in the evolution of Andorra.

## DID YOU KNOW...

That all the Ràmio farm buildings, despite being very old, are still used for the purpose for which they were first built: providing stables for animals and temporary storage of hay.

## BEHIND THE NAME

**Coll Jovell:** A hill amidst mountains, a depression between the mountains. Etymology: It is believed that the word may originate from the Latin 'collu' which means small mountain. Jovell means an easy passage between two mountains or a rounded crest, which would originate from the Latin 'iugu', 'jou'.



Sant Miquel d'Engolasters Church



"UNDR" sculpture



Views from the viewpoint



Robin  
*Erithacus rubecula*

The Jovell Hill route is a circular trail that runs through the Escaldes-Engordany parish. It's an easy route, ideal for the entire family.

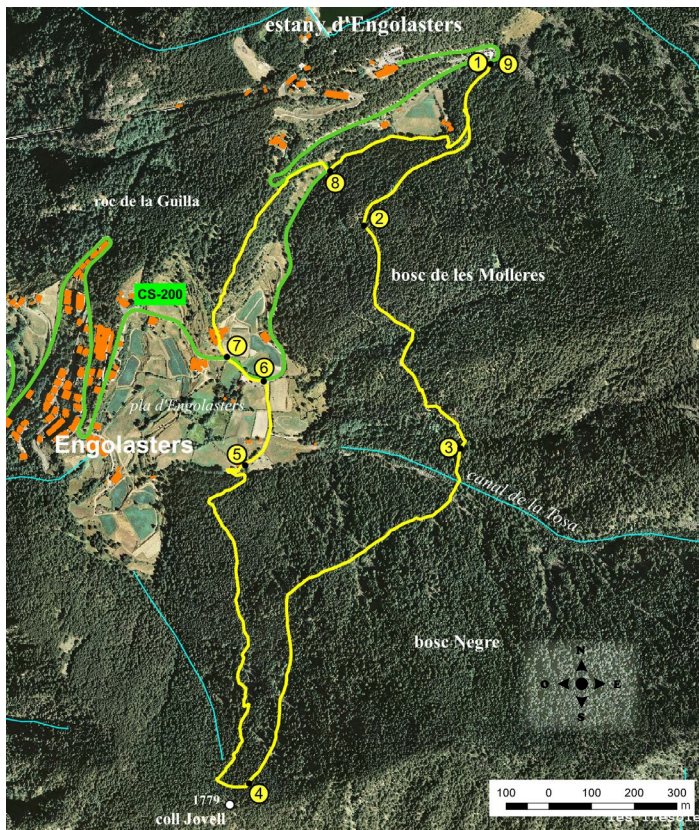
This route runs along the Camí dels Matxos path, a cobblestone track that is part of the Engolasters hydroelectric path, providing you with views over the bottom of Madriu valley, which is the only one to maintain the traditional uses and landscapes. Hence, this valley was declared a UNESCO World Cultural Heritage Site in 2004.

This natural landscape is quite impressive, with forests of Scots pine (*Pinus sylvestris*) and white fir. The undergrowth is mostly made up by alpenrose (*Rhododendron ferrugineum*) and European blueberry (*Vaccinium myrtillus*). These two shrubs, and especially the first one, seek the protective blanket of snow, so they tend to grow mostly on high ground shady spots, where the snow remains for longer. Other species which are present include pinemat

manzanita (*Arctostaphylos uva-ursi*) and common heather (*Calluna vulgaris*).

The thick vegetation present in this landscape makes it complicated to observe the fauna, but their traces and songs will let you know that you're not alone. The presence of beech martens (*Martes foina*) and red fox (*Vulpes Vulpes*) will be obvious as their excrements are visible along the tracks.

The birds you might get to see include the black woodpecker (*Dryocopus martius*) with sizes exceeding 40 cm, the great sallow (*Salix caprea*) and silver birch (*betula pendula*). Other species that may be heard include the Eurasian blackcap (*Sylvia atricapilla*), the Eurasian wren (*Troglodytes troglodytes*), the European robin (*Erithacus rubecula*), the Eurasian blue tit (*Cyanistes caeruleus*) or the bullfinch (*Pyrrhula pyrrhula*).



**TECHNICAL  
INFORMATION**

- 
- 1h 45 MIN
- +250 M
- 250 M
- 4.900 M
- SI
- APPROXIMATE TIME

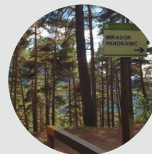
**ROUTE SIGNAGE**

- 
- GR11
- WRONG DIRECTION

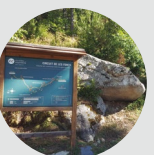


escaldes-engordany

PLACE ALTITUDE	DISTANCE ASCENT/DESCENT	TIME	COORDINATES	DESCRIPTION
<b>1</b> <b>CIRCUIT DE LES FONTS</b> 1.628 m	-- (--)	--	N42 31.046 E1 34.256	Starting off from kilometre 0, take the CG2 road towards France - Encamp. Upon passing kilometre 1, turn right at the roundabout and head towards Engolasters. Continue upwards along the CS200 road, pass by the Sant Miquel d'Engolasters church and shortly after passing kilometre 6 you'll reach a small car park where you can leave your vehicle. Just in front of here you'll see the starting point of the Water Springs Circuit.
<b>2</b> <b>PANORAMIC VIEWPOINT</b> 1.630 m	550 m (+2 m)	5'	N42 30.840 E1 34.042	The route begins along a wide flat track. Pass through a small tunnel and just after it you'll come to a viewpoint with amazing views over Andorra la Vella and Escaldes-Engordany.
<b>3</b> <b>PICNIC AREA</b> 1.630 m	1.220 m (+0 m)	10'	N42 30.560 E1 34.210	Continue along the flat track until you reach the picnic area.



PLACE ALTITUDE	DISTANCE ASCENT/DESCENT	TIME	COORDINATES	DESCRIPTION
<b>4</b> <b>COLL JOVELL</b> 1.770 m	2.300 m (+140 m)	40'	N42 30.134 E1 33.854	At this point leave the track and continue along Camí dels Matxos as it heads south. Soon you'll pass a path to your right that would take you to the Font de la Closa water spring, but continue upwards towards Jovell hill. Just before reaching the hill, you'll come to an intersection. You'll reach Jovell hill, the highest point of the route with views over the Madriu and Perafita valleys.
<b>5</b> <b>FONT DE LA CLOSA WATER SPRING</b> 1.520 m	3.350 m (-250 m)	1h 10'	N42 30.536 E1 33.843	Turn back onto the same path and after descending about 50 metres, turn left onto the Jovell hill path heading towards Font de la Closa water spring. The track runs downwards along the Costa de l'Avet until you reach a picnic area which is where the pretty Font de la Closa water spring is located.
<b>6</b> <b>SCULPTURE</b> 1.520 m	3.570 m (+0 m)	1h 13'	N42 30.643 E1 33.873	Continue along the forest track and you'll soon reach the road. At this point you'll come to the UNDR sculpture by the artist Josep Cerdà i Ferré.
<b>7</b> <b>ENGOLASTERS MOUNTAIN HUTS</b> 1.520 m	3.680 m (+0 m)	1h 15'	N42 30.673 E1 33.810	Turn left onto the CS200 road. You will soon reach the Engolasters farm buildings.
<b>8</b> <b>CORTALET</b> 1.566 m	4.310 m (+46 m)	1h 30'	N42 30.909 E1 33.983	Continue along the cobblestone track that runs past the farm buildings. The track heads into the forest and you will come to an intersection. Turn right and follow the yellow dots. The path will take you back to the road. Walk downwards along the CS200 road until you reach Camí del Cortalet.
<b>9</b> <b>CIRCUIT DE LES FONTS</b> 1.628 m	4.900 m (+62 m)	1h 45'	N42 31.046 E1 34.256	Continue along Camí del Cortalet. The track is wide and slopes slightly upwards until you reach an intersection. Turn left towards the Engolasters pond. You'll soon come to the Circuit de les Fonts track. Turn left and continue until reaching the starting point of this trail.



**ROUTE PROFILE**

