

# 44 BORDES DE L'ENSEGUR

## DON'T MISS...

visiting the Casa de la Muntanya (mountain house) in the village of Ordino.

## DID YOU KNOW...

the Parc Natural de Sorteny (Sorteny Nature Park) in Ordino is home to more than 700 species of flora and fauna?

## BEHIND THE NAME

Ensegur (Ansegur) - comes from the Celtic place name segodunum. It may also come more recently from SECURU, meaning 'secure' or 'refuge', since the surrounding terrain is rough and inaccessible.



Sculpture



Bordes



Dry stone wall



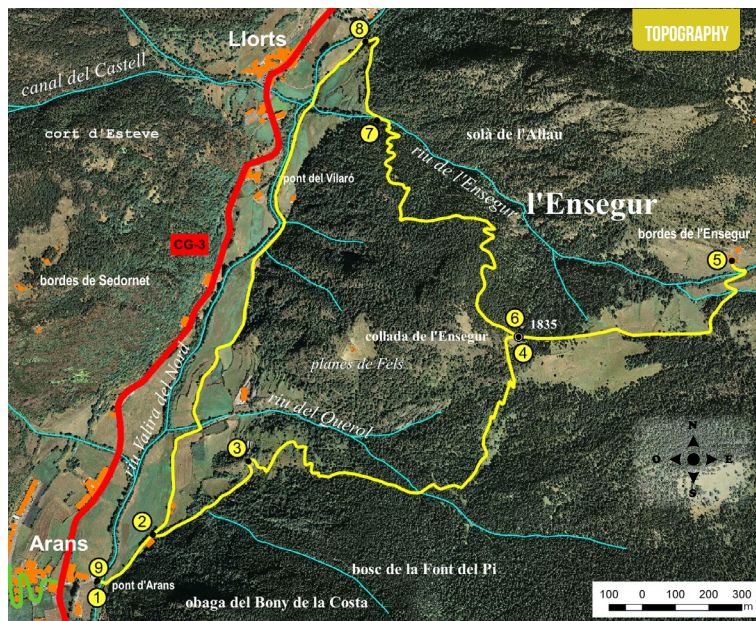
Pont Ensegur

Circular route across the parish of Ordino, between the villages of Arans and Llorts. The route around Les Bordes de l'Ensegur is an average level hike on which you'll be able to admire the vegetation of the Font del Pi forest, magnificent views of the Collada de l'Ensegur col and the Coll d'Arenes pass, as well as the picturesque Bordes de l'Ensegur located at an altitude of 1,854 metres.

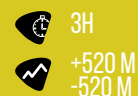
The parish of Ordino stretches along the River Valira del Nord, which is the product of the confluence of the rivers Tristaina and Rialb. The main river and its backbone are born in the Coma del Forat, from the water flowing from the Estanys de Tristaina, some of the most well-known lakes in Andorra.

The vegetation of Ordino is lush, with expanses of coniferous forest and smaller deciduous forest. The general landscape of the parish is that of a typical Pyrenean valley, with earthy tones visible in the higher mountains. Further down is a wide strip of dark green and in the lower part of the valley, meadows and riverside vegetation reign supreme.





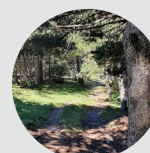
**TECHNICAL INFORMATION**



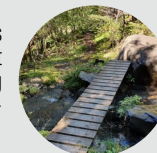
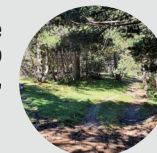
**ROUTE SIGNAGE**



PLACE ALTITUDE	DISTANCE ASCENT/DESCENT	TIME	COORDINATES	DESCRIPTION
<b>1</b> PONT D'ARANS 1.365 m	-- (--)	--	N42 34.939 E1 31.224	Take the CG-3 towards Arcalis. In the village of Arans, after kilometre 12, turn into an alley on the right, where you'll find the Pont d'Arans bridge, the starting point of your route.
<b>2</b> CROSSROADS 1.380 m	234 m (+15 m)	5'	N42 35.013 E1 31.347	Start the route by following Camí Ral in the direction of El Serrat. Shortly afterwards, you'll come to a crossroads with an information panel showing Camí Les Bordes de l'Ensegur.
<b>3</b> WOODEN DOOR 1.452 m	642 m (+72 m)	20'	N42 35.137 E1 31.553	Take the path that climbs to the right towards the Bordes de l'Ensegur. Gain altitude along a wide path heading east until you reach a small viewpoint where you'll find a large wooden door.
<b>4</b> COLLADA DE L'ENSEGUR 1.834 m	2.152 m (+382 m)	1h 15'	N42 35.343 E1 32.149	From this point, take a narrow path heading south. Shortly afterwards, head into the Fond del Pi forest. Keep gaining altitude until you reach the Collada de l'Ensegur col.



PLACE ALTITUDE	DISTANCE ASCENT/DESCENT	TIME	COORDINATES	DESCRIPTION
<b>5</b> BORDES DE L'ENSEGUR 1.854 m	3.008 m (+30 m -10 m)	1h 30'	N42 35.468 E1 32.611	From this point, the path gently unfolds between meadows and forest until you reach the picturesque Bordes de l'Ensegur, where you'll get spectacular views of the Coll d'Arenes pass.
<b>6</b> COLLADA DE L'ENSEGUR 1.834 m	3.864 m (-30 m +10 m)	1h 40'	N42 35.343 E1 32.149	Make a U-turn and continue along the same path as you came by until you get back to the Collada de l'Ensegur col. At this point, you'll find a crossroads.
<b>7</b> SMALL BRIDGE 1.466 m	5.194 m (-368 m)	2h 25'	N42 35.695 E1 31.828	Continue along the straight path towards Lloris. Stay on the right down the path that goes into the woods. Go down this sloping path for a while until you reach a small bridge that crosses the River Ensegur.
<b>8</b> CAMÍ RAL 1.426 m	5.490 m (-40 m)	2h 30'	N42 35.823 E1 31.801	Cross the River Ensegur and continue descending until next arriving at the Camí Ral in the village of Lloris.
<b>9</b> PONT D'ARANS 1.365 m	7.470 m (-85 m)	3h	N42 34.939 E1 31.224	Continue to the left in the direction of La Cortinada. Walk 2 kilometres along this section of the Ruta del Ferro (Iron Route) until arriving at the Pont d'Arans bridge, where the route starts and finishes.



**ROUTE PROFILE**

