

# 97 CAMÍ DE LA PLANA

## DON'T MISS...

getting up close to the Romanesque Sant Miquel d'Engolasters church, which dates back to the 12th century.

## DID YOU KNOW...

Escaldes Engordany is the youngest parish of the seven in Andorra, formed in 1978.

## BEHIND THE NAME

Engordany: (gordans) / (lordanos)

WALKING IN ANDORRA



Sant Miquel d'Engolasters church



Robin

This path, which starts from the Escaldes-Engordany Tourist Information Office, cross the La Plana region diagonally to access the terraces and bordes (huts) in this area. The path is cobbled along the entire route and flanked by the embankments of the terraces.







Terraces, a system of cultivation that arranged the land into beds or patches, began to proliferate from the 18th century onwards to gain farmland and was found across all the parishes.

Escaldes-Engordany is the very picture of a human landscape, where land use can be seen along the route through the terraces,

bordes and cobbled paths that have been used for many years. The natural environment has offered various resources to the inhabitants of Andorra. Stone for the walls of houses, bordes and orris (barns), to build bridges, make mounds or enclose meadows and demarcate townships.

This easy route takes you away from the town centre on a semi-urban route full of moss, bordes (huts) and terraces, as we have presented in this short introduction.

## TECHNICAL INFORMATION

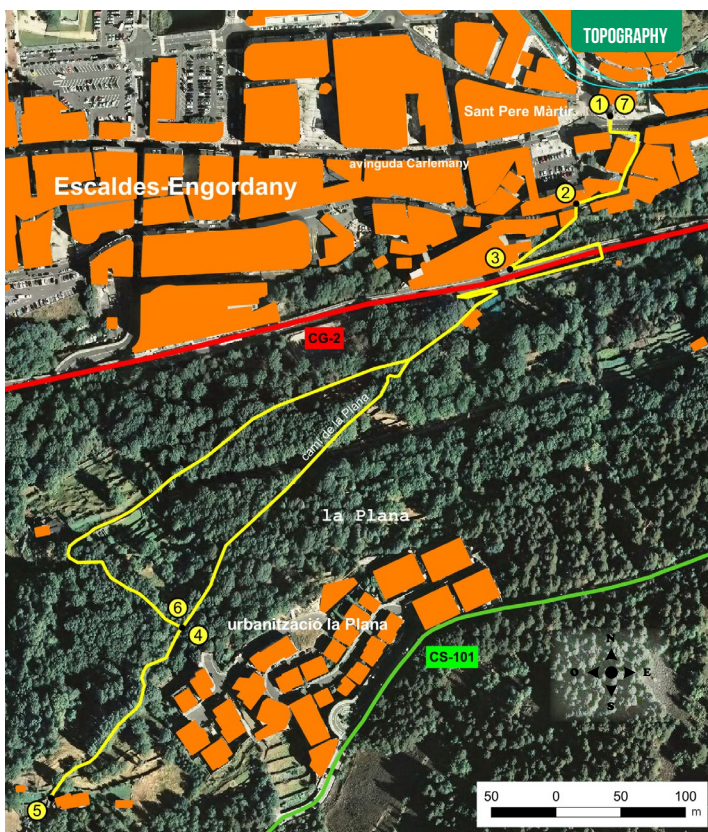
-  50 MIN
-  +136 M
-  -136 M
-  1.950 M
-  SI
-  APPROXIMATE TIME

## ROUTE SIGNAGE

-   
-  WRONG DIRECTION
-  INFORMATION PANELS

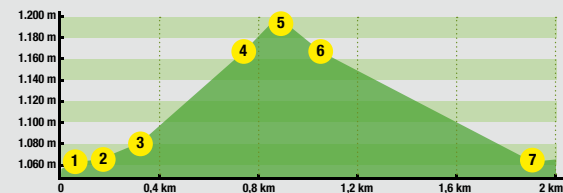


escaldes-engordany



PLACE ALTITUDE	DISTANCE ASCENT/DESCENT	TIME	COORDINATES	DESCRIPTION
<b>1</b> <b>TOURIST INFORMATION OFFICE</b> 1.065 m	-- (--)	--	N42 30.532 E1 32.531	The starting point of this route is at the Escaldes-Engordany Tourist Information Office.
<b>2</b> <b>PLACETA DE L'OBAC</b> 1.069 m	117 m (+3 m)	5'	N42 30.499 E1 32.522	Cross Avinguda Carlemany, going a few metres up the street and then turning right down Carrer MN. G. Adellach. Shortly afterwards, this small street becomes Carrer de l'Obac. Continue along this road and then arrive at Placeta de l'Obac, where you'll find an information panel for Camí de la Plana.
<b>3</b> <b>L'OBAC MAIN ROAD</b> 1.084 m	353 m (+15 m)	10'	N42 30.469 E1 32.471	Climb the cobbled path with a steep slope to the Obac main road. Cross the main road and a few metres down you'll find a Camí de la Plana information panel. You'll then find another information panel.

## ROUTE PROFILE



PLACE ALTITUDE	DISTANCE ASCENT/DESCENT	TIME	COORDINATES	DESCRIPTION
<b>4</b> <b>INFORMATION PANEL</b> 1.174 m	720 m (+90 m)	25'	N42 30.323 E1 32.301	Turn right along Camí de la Plana, towards the town of La Plana. Continue up a cobbled path with a steep slope, following signs for Camí de la Plana at all times. After a short but intense climb, you'll come to another information panel.
<b>5</b> <b>BORDA DEL MATEU</b> 1.202 m	905 m (+28 m)	30'	N42 30.504 E1 32.537	Continue climbing up Camí de la Plana, now towards a <i>borda</i> . From this point, the path softens to the area of La Plana, where Borda del Mateu is found.
<b>6</b> <b>INFORMATION PANEL</b> 1.174 m	1.084 m (-28 m)	35'	N42 30.323 E1 32.301	Return along the same path to the crossroads from before, with the information panel.
<b>7</b> <b>TOURIST INFORMATION OFFICE ESCALDES-ENGORDANY</b> 1.065 m	1.950 m (-108 m)	50'	N42 30.532 E1 32.531	At this point, turn left along Camí de la Borda del Vicari towards Escaldes-Engordany. The path descends for a while and shortly afterwards is another information panel. Continue to the right along Camí Pla, following some meadows to get to Camí de la Plana again. Go down this path to the start and end point of this route.

