

48 ROC DEL CASTELL

DON'T MISS...

eating in a typical Andorran borda.

DID YOU KNOW...

this parish is one of the most well-preserved in terms of architecture?

BEHIND THE NAME

Llorts: in Basque, lurte, could mean 'avalanche of stones' or 'landslide'.

WALKING IN ANDORRA



Llorts



Sedornet



Castell Forest



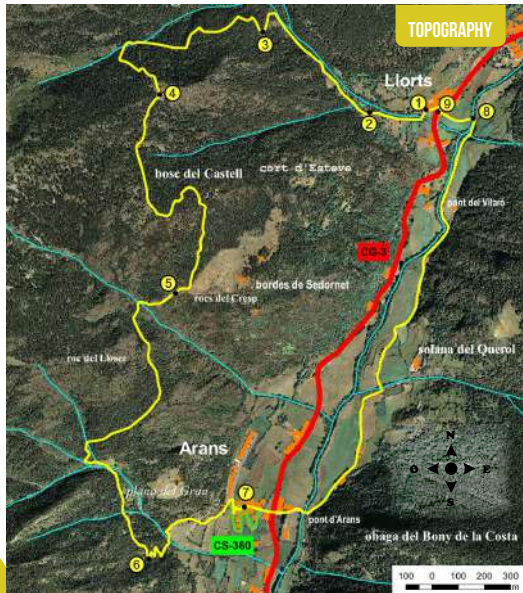
Sign

Roc del Castell is a circular route that runs between the villages of Llorts and Arans in the parish of Ordino. We recommend doing this on a hot day, as a large part of the route is in the pretty Castell Scots pine forest, with a lot of plant cover providing shade along the entire route. Once at Roc del Castell, you can enjoy spectacular views of Ensegur, Coll d'Arenes and Pic de Casamanya.

The Scots pine (*Pinus sylvestris*) forms a kind of belt with wide, layered crowns that can be seen from the village of Llorts. These contrast with young pines above and the meadows with sessile oaks (*Quercus petraea*) below, between the forest and the village. The interior of the

pine forest is evocative, with fallen trees, dead trees, trees that are enormous in diameter, and tall and straight trees, as well as rocky outcrops and almost non-existent undergrowth.

If you walk slowly, you should be able to spot tits such as the European crested tit (*Lophophanes cristatus*), the Eurasian blue tit (*Cyanistes caeruleus*) or the great tit (*Parus major*). In the middle of the old forest there are signs of black woodpecker (*Dryocopus matrius*), European green woodpecker (*Picus viridis*) and great spotted woodpecker (*Dendocopos major*).



PLACE ALTITUDE	DISTANCE ASCENT/DESCENT	TIME	COORDINATES	DESCRIPTION
1 START OF THE PATH 1.450 m	-- (--)	--	N42 35.771 E1 31.565	Take the CG-3 towards Ordino -Arcalis until you get to the village of Llorots. Once in Llorots, go up the path to the head of the village until you find an information panel indicating the start of Camí del Roc del Castell.
2 INFORMATION PANEL 1.500 m	256 m (+50 m)	10'	N42 35.762 E1 31.404	Take Camí del Roc del Castell to then cross the River Angonella shortly afterwards. Follow this cobbled path, which gains altitude, to the left of the river. Shortly afterwards, you'll come to a small crossroads, where you'll find an information panel.
3 SCREE SLOPE 1.645 m	1.020 m (+145 m)	40'	N42 35.927 E1 31.106	Continue along the path that climbs to the right towards Roc del Castell. The path progresses through the forest, always along the River Angonella. At one point, the path changes direction and moves away from the river. You'll then come to a small scree slope.
4 ROC DEL CASTELL 1.915 m	2.190 m (+289 m)	1h 30'	N42 35.797 E1 30.821	The path progresses through the forest with a steep incline. Further up, you'll come to a clearing where you can touch the Roc del Castell. From here, you can enjoy spectacular views of Ensegur, Coll d'Arenes and Pic de Casamanya.

TECHNICAL INFORMATION

- 3H 30 MIN
- +610 M
- 610 M
- 8.000 M
- APPROXIMATE TIME

ROUTE SIGNAGE

- GR 11
- WRONG DIRECTION



PLACE ALTITUDE	DISTANCE ASCENT/DESCENT	TIME	COORDINATES	DESCRIPTION
5 CROSSROADS 1.762 m	3.460 m (+38 m -181 m)	2h	N42 35.384 E1 30.866	Enter the forest again. Follow the path marked with yellow dots.. Shortly afterwards, the path starts to go straight down to a crossroads. At this point, you can take the path back to Llorots or continue the route to Arans.
6 GR11 CROSSROADS 1.525 m	5.050 m (+10 m -247 m)	2h 40'	N42 34.838 E1 30.801	Leave Les Bordes de Sedornet on the left and continue along the path towards Arans. Continue down through the forest until you get to a crossroads, where you'll cross a section of the GR11 that goes from Arans towards Coll de les Cases.
7 ARANS 1.395 m	5.730 m (+16 m -146 m)	3h	N42 34.947 E1 31.061	Continue descending to the left, still following signs for the GR11 until you get to a main road (CS-360). Head right along the main road for a few metres and then you'll find a small path that descends to the left. Take this detour to the village of Arans.
8 BRIDGE 1.420 m	7.830 m (+61 m -36 m)	3h 25'	N42 35.754 E1 31.709	Cross the village via an alley, following the GR11 signs. You'll come to the main road (CG-3). Cross it and continue to the Pont d'Arans bridge. Cross the river and turn left to join Ruta del Ferro (Iron Route) towards Llorots mine. Follow Camí Ral for 2 km until you come to a small bridge.
9 LLORTS 1.440 m	8.000 m (+20 m)	3h 30'	N42 35.767 E1 31.603	Creuem el pont i pugem per un carrer asfaltat fins al poble de Llorots.

ROUTE PROFILE

