

77 CAMÍ DE FONTANEDA FINS AL COLL DE LA GALLINA

DON'T MISS...

a visit to the Romanesque chapel of Sant Miquel in the town of Fontaneda, built over the Llosa river. There is also a nice fountain, consisting of cement trough, a spout and a small grill for the bucket.

DID YOU KNOW...

Sant Mateu del Pui d'Olivesa is one the smallest and oldest documented churches in Andorra (985).

BEHIND THE NAME

Fontaneda: From the Latin *fons, fontis*, meaning "fountain" or "spring". Facing south, this small town extends below the sunny side of Mossers. It is crossed by Canal Gran river and the La Quera river, as well as by other small fluvial streams nearby.



Sant Mateu del Pui d'Olivesa



Aixirivall views



Path



Coll de Rep hill

The Fontaneda path starts in the town of Sant Julià de Lòria, at the Fontaneda bridge. The most common trees here are the European ash (*Fraxinus excelsior*), holm oak (*Quercus rotundifolia*) and downy oak (*Quercus pubescens*). You may also see some European nettle trees (*Celtis australis*) and walnut trees (*Juglans regia*).

A few minutes into the journey, you'll reach the chapel of Sant Mateu del Pui d'Olivesa, which is formed by a small rectangular nave, reinforced by a semicircular apse built after the temple; it is believed that it was meant to substitute a square one when the Lombard

masters arrived in Andorra. The door, on the west wall, is rather rudimentary and consists of limestone voussoirs. One night in the middle of the 19th century, the chapel was assaulted and burned down. It wasn't until the beginning of the 20th century that the roof was repaired and raised about 50 centimetres.

The birds that you can hear here – and even see, if you have binoculars – include the ciril bunting (*Emberiza cirilus*), a rather rare species in Andorra, which sings dry and flat, and the African stonechat (*Saxicola torquata*), whose song is guttural.

SANT JULIÀ DE LÒRIA

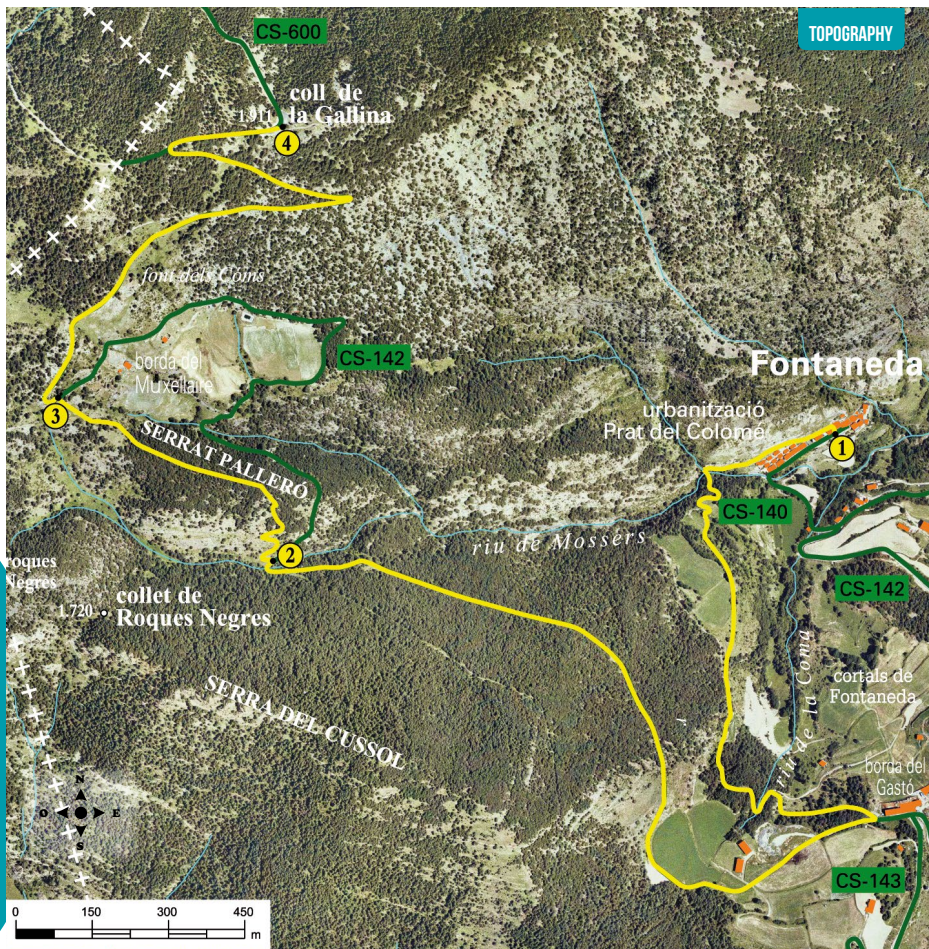
77. CAMÍ DE FONTANEDA FINS AL COLL DE LA GALLINA

TECHNICAL INFORMATION

- 2H 15 MIN
- 1H 30 MIN
- +605 M
- 6.900 M
- NO*
- APPROXIMATE TIME

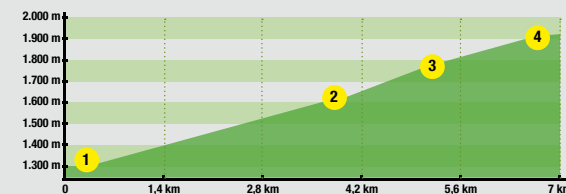
ROUTE SIGNAGE

-
- WRONG DIRECTION



* You can return using the same route in the opposite direction.

ROUTE PROFILE



PLACE ALTITUDE	DISTANCE ASCENT/DESCENT	TIME	COORDINATES	DESCRIPTION
1 FONTANEDA 1.305 m	-- (--)	--	N42 27.240 E1 27.799	To reach the starting point from Sant Julià de Lòria, take the CS-140 road until the Fontaneda bridge and climb up to the town of Fontaneda. The path starts off from the centre of the town.
2 DEVIATION FROM THE MAIN RIVER MOSSERS TRACK 1.635 m	4.190 m (+330 m)	1h	N42 27.099 E1 26.994	Take the path indicated by yellow dots, climb above the town and head through the meadows until you come to the track that leads to the Gastó farm building, there you turn right and take the main road upwards until reaching the River Mossers, at this point the trail leaves the road.



PLACE ALTITUDE	DISTANCE ASCENT/DESCENT	TIME	COORDINATES	DESCRIPTION
3 INTERSECTION WITH MAIN TRACK 1.780 m	5.310 m (+145 m)	1h 40'	N42 28.339 E1 27.424	Then the path heads up the side of the hill and into a Scots pine forest, where further on it eases off after having overcome the Palleró mountain range. Along a relatively unused stretch you reach the road, slightly above the Muxellaire farm building.
4 LA GALLINA PASS 1.910 m	6.900 m (+130 m)	2h 15'	N42 27.561 E1 27.001	Continue upwards along the main road until reaching the mountain pass, this will take you along a winding path with 180° bends.

