

# 25 EL CUBIL PETIT

## DON'T MISS...

a guided tour of the church of Santa Eulàlia d'Encamp, which has the highest bell tower in Andorra at 23 metres.

## DID YOU KNOW...

that the Torre dels Moros is an old military building that dates back to the 16th century? You can climb to the top and enjoy a magnificent view of the town of Encamp.

## BEHIND THE NAME

**Cubil:** A typical Andorran place name, with a semantic change referring to a peak or hill that means "hole, bed, depression", etc. From the Latin *cubile*, which has the same meaning.

WALKING IN ANDORRA



El Cubil Gran



Sea holly  
(*Eryngium bourgatii*)



Thistle  
(*Carlina vulgaris*)



Marmot  
(*Marmota marmota*)

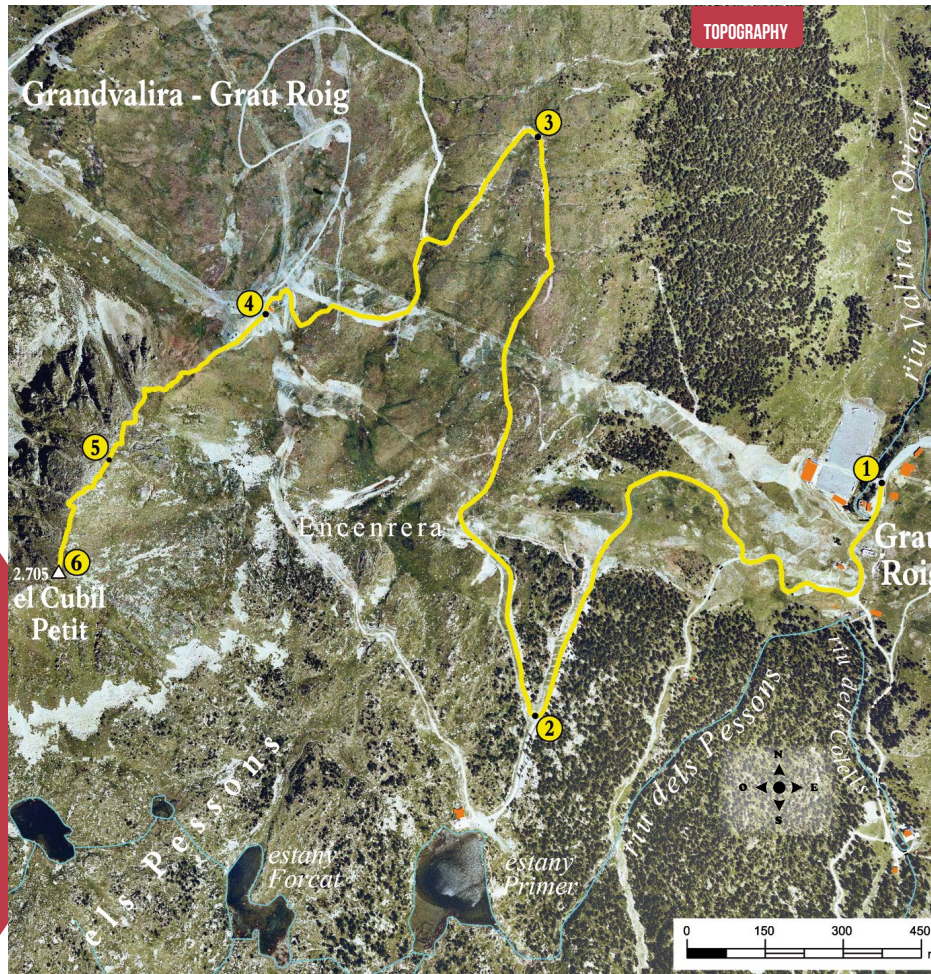
Here you can see the impressive crest that joins El Cubil Gran and El Cubil Petit. This is a very difficult path and it is better not to go unless you have the right equipment.

This is the lowest of the five peaks that form the Pessons cirque. In order, from west to east, these five mountains are El Cubil Petit, El Cubil Gran, Pressons peak, Àliga peak and Montmalús peak.

To reach El Cubil Petit, you'll have to go up to the Grandvalira ski resort, in the Grau Roig

area. Once there, take the path heading west and follow it until you come to a second car park, called El Cubil. Although there is no marked path to reach the peak, it is not hard to find from there. Start heading southeast. You are now heading to El Cubil Petit, following the pass.

From the chair lift station to the peak, there are no more than 300 metres in difference of elevation, though the incline is quite normal. Once at the top, you'll be able to enjoy some splendid views of Pessons cirque.





**TECHNICAL INFORMATION**

- ● ● ●
- 2H 45 MIN
- 2H 15 MIN
- +600 M
- 4.500 M
- NO\*
- APPROXIMATE TIME

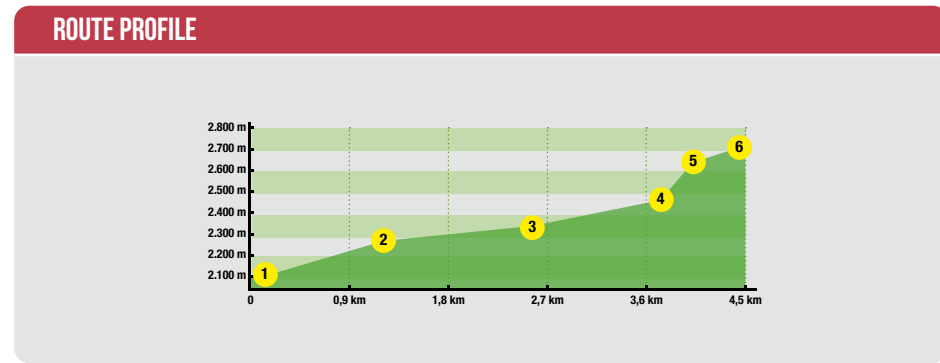
**ROUTE SIGNAGE**

- LANDMARKS
- GRP
- WRONG DIRECTION



PLACE ALTITUDE	DISTANCE ASCENT/DESCENT	TIME	COORDINATES	DESCRIPTION
<b>1</b> EL CUBIL CAR PARK BRIDGE 2.100 m	-- (--)	--	N42 31.914 E1 41.853	Take the CG-2 to the Grau Roig intersection. Then, follow the CS-280 until the second car park, called El Cubil. At the entrance to the car park, you'll find a bridge where there is a large wooden sign for Pessons cirque. 
<b>2</b> GRP INTERSECTION 2.270 m	1.360 m (+170 m)	40'	N42 31.670 E1 41.369	Following the path for 100 metres, you'll find the El Cubil chair lift. Then head west, always on the path, and pass under the El Cubil tele-chair twice. 

PLACE ALTITUDE	DISTANCE ASCENT/DESCENT	TIME	COORDINATES	DESCRIPTION
<b>3</b> GRP DETOUR 2.325 m	2.630 m (+55 m)	1h 15'	N42 32.271 E1 41.366	Next, head northwest on the GRP. The inclination of the path is very slight. Once you have passed under the tele-chair, you can go directly up to where the chair lift returns or follow the GRP until it leaves the path. 
<b>4</b> RETURN FROM TELE-CHAIR 2.460 m	3.690 m (+135 m)	2h	N42 32.084 E1 40.986	Now, follow the ski slope heading southwest until you reach the El Cubil chair lift station. 
<b>5</b> SHELF 2.625 m	4.160 m (+165 m)	2h 30'	N42 31.932 E1 40.768	A few metres away is another chair lift. Follow the path to the southwest. The first stretch is very easy, but a little further on the terrain becomes more mountainous. You'll have to go up a canal. Without having to climb the crest and with the help of landmarks, you'll come to a small shelf. 
<b>6</b> EL CUBIL PETIT 2.700 m	4.500 m (+75 m)	2h 45'	N42 31.816 E1 40.699	You'll immediately have to pass over a rocky area. Next, you'll pass a station that provokes avalanches in winter, with El Cubil Petit just a few metres away. The spectacular view over Pessons cirque is the best in Andorra. 



\* You can return by following the same route. It is possible to go down the path that leads to the first Pessons lake. You'll have to turn left and follow the path to the El Cubil tele-chair station. From the peak, you can easily see how it goes down to the first Pessons lake.