

35 TOMB DE LLORTS A SEDORNET

DON'T MISS...

the Llorts mines, which bear witness to the work exploring for new ore deposits during the last phase of the Andorran iron industry (first half of the 19th century). Between the 17th and 19th centuries, the shaded part of Llorts was one an iron ore mining area. This is a chance to get a glimpse of the past in the great outdoors.

DID YOU KNOW...

In the past, Andorran residents used fir or birch tree bark as containers when they milked cows and sheep.

BEHIND THE NAME

Llorts: Above this town is a place called prat de *les Allaus*. Thanks to the town elders, we know that one of these allaus ("rock slides") once carried away a chapel.

Etimologia: From the Basque *lurte*, meaning "avalanche of stones, detachment".

WALKING IN ANDORRA



Sedornet huts



Liri dels Pirineus
(*Iris xiphoides*)



Nuthatch
(*Sitta europaea*)



Toadflax
(*Linaria repens*)

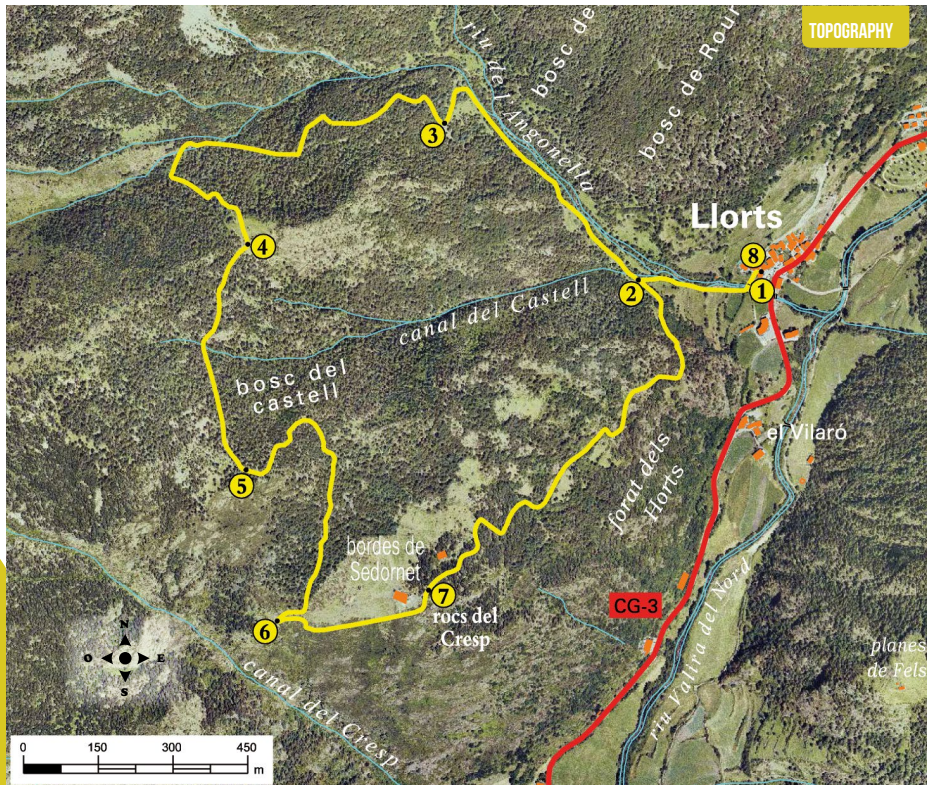
This route begins in the village of Llorts, one of the 8 towns that make up the parish of Ordino (Ordino, Segudet, Sornàs, Ansalonga, La Cortinada, Arans and El Serrat). Here you can discover a forest of Scots pines (*Pinus silvestris*) with large canopies and remarkable diameters, as well as a significant community of birds to watch and hear.

The forest can be seen from Llorts, where the young pine trees, higher up, can be contrasted with large-leaved oaks, found below between the forest and town of Llorts.

Among the small fauna to be found are the coal tit (*Parus ater*), the crested tit (*Parus cristatus*) and the great tit (*Parus major*).

On some of the tree trunks you can see holes made by birds like the nuthatch (*Sitta europaea*) and the short-toed tree-creeper (*Certhia brachydactyla*), which normally nests in dead tree trunks.

This less travelled route takes you to the Sedornet huts, a rarely visited site reminiscent of the pastoral activity that was once common in Andorra.



TECHNICAL INFORMATION

- ● ● ●
- 3H
- +495 M
- 495 M
- 4.600 M
- SI
- APPROXIMATE TIME

ROUTE SIGNAGE

- ● ●
- WRONG DIRECTION

PLACE ALTITUDE	DISTANCE ASCENT/DESCENT	TIME	COORDINATES	DESCRIPTION
----------------	-------------------------	------	-------------	-------------

1 LLORTS 1.435 m	-- (--)	--	N42 35.769 E1 31.569	Follow the CG-3 in the direction Serrat and you'll come upon the pretty town of Llorets. Next to church of Sant Serni de Llorets is a car park. Go up the narrow street called Carrer de l'Angonella street and look for a sign. You'll then have to take the path on the left.	
--------------------------------------	------------	----	-------------------------	---	--

2 EL CASTELL ROCK PATH 1.495 m	256 m (+60 m)	15'	N42 35.758 E1 31.389	A few metres further on, you'll cross a bridge over L'Angonella river. Next, go up a moderately steep path along the river until you reach a small bridge made of tree trunks. This is where you start the Roc del Castell path.	
--	------------------	-----	-------------------------	--	--

3 ROCKY AREA 1.616 m	755 m (+121 m)	40'	N42 35.926 E1 31.103	Cross the creek that goes down the El Castell canal and follow the path that continues alongside the L'Angonella river. A bit further on, turn left and cross a small creek that is often dry. Keep on until you come to a rocky area.	
--	-------------------	-----	-------------------------	--	--

PLACE ALTITUDE	DISTANCE ASCENT/DESCENT	TIME	COORDINATES	DESCRIPTION
----------------	-------------------------	------	-------------	-------------

4 EL CASTELL ROCK PATH 1.905 m	1.640 m (+289 m)	1h 35'	N42 35.793 E1 30.816	After you pass over the rocky area, the slope becomes very steep as you snake up through the woods. The slope stays steep until you exit into a clearing. A few more metres on and you'll come to El Castell rock.	
--	---------------------	--------	-------------------------	--	--

5 DESCENT TO THE HUTS OF SEDORNET 1.930 m	2.160 m (+25 m)	1h 50'	N42 35.549 E1 30.817	Now that you have passed the hardest part of the route, it's time to enjoy this bucolic landscape. There are spectacular views of Casamanya peak and the Ensegur valley. Through the next stretch your path will level out until you descend to the huts of Sedornet.	
---	--------------------	--------	-------------------------	---	--

6 HUTS OF SEDORNET INTERSECTION 1.755 m	2.860 m (-175 m)	2h 10'	N42 35.385 E1 30.865	The path goes back into the forest towards the El Cresp canal. The descent is steep until you reach the Arans and Llorets path intersection. The huts of Sedornet will be on your left.	
---	---------------------	--------	-------------------------	---	--

7 INTO THE FOREST 1.720 m	3.260 m (-35 m)	2h 25'	N42 35.420 E1 31.086	When you come to an intersection, turn left in the direction of Llorets. Here you can enjoy impressive views over the Ordino valley. Next, the path passes by the huts of Sedornet until you enter the forest again.	
---	--------------------	--------	-------------------------	--	--

8 LLORTS 1.435 m	4.600 m (-285 m)	3h	N42 35.769 E1 31.569	The path goes through the forest until you reach the El Castell rock path. A few metres down and you'll reach the town of Llorets.	
--------------------------------------	---------------------	----	-------------------------	--	--

ROUTE PROFILE

