

67 REC DEL SOLÀ

WALKING IN ANDORRA



DON'T MISS...

The chance to complete all the interpretative trails with a tourist guide. Ask for further information at Andorra la Vella tourism office.

DID YOU KNOW...

That during the 17th and 18th centuries, the increasing population led to the need for sourcing more agricultural land. The sunny slope of the mountain was soon turned into arable terraces. The irrigation canal was built in 1893 and you can still see a large number of orchards along the entire route, growing potatoes, lettuce, tomatoes, onions, etc.

BEHIND THE NAME

Rec: From the pre-Roman word *recu*, meaning an open canal or ditch in the ground for conducting water captured from a river or stream by means of a dam. In Andorra, this is called an *aixec*, because it raises the water level (*aixecar* means "to rise" in Catalan). Recs are used to irrigate crops.

Solà: From the Latin *solanu*, "the sunny part", which is the mountain slope exposed to sunlight.



Panoramic view



Hay



Solà irrigation canal



Row of poplar trees

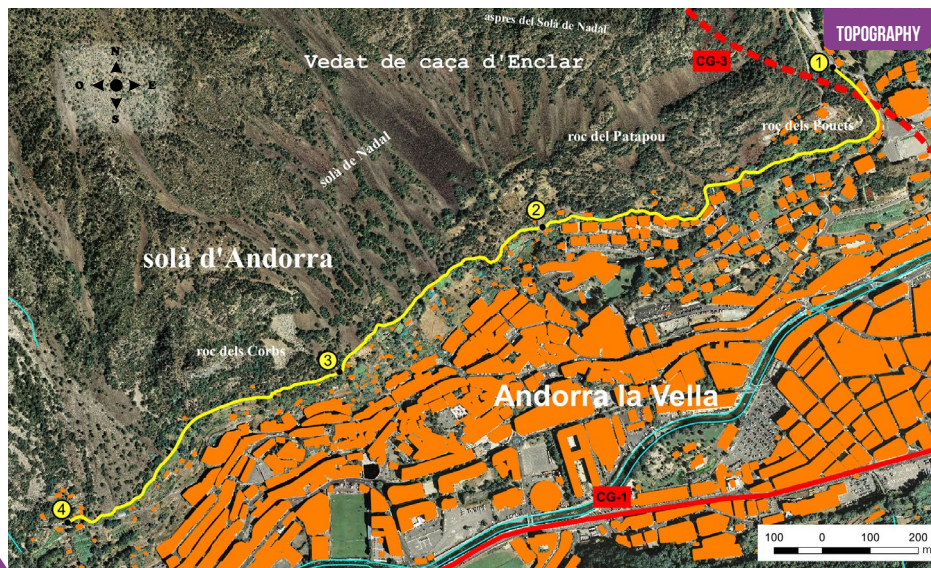
So far, the Rec del Solà irrigation canal and the Rec de l'Obac irrigation canal (located on the shady part of Andorra la Vella) have enabled – and continue to enable – inhabitants to practice sport, take walks, view the town from a perspective suitable for understanding its growth or simply blow off the stress they accumulate in urban dynamics, all just a few metres from the city centre.

These irrigation canals have been and remain a natural lung that connects the town with the natural and cultural landscape surrounding it, and they generate endless elements for environmental education and for thinking about sustainable development.

Based on this fundamental idea, Andorra la Vella City Council decided to link the area of the two ir-

rigation canals with other parts of the parish that are of high natural, historical and cultural interest in order to establish a large peripheral band around the city of Andorra la Vella. This band, called the Anella Verda ("Green ring"), is intended to become a long track of around 15 kilometres that will encircle the whole parish.

Near the Solà irrigation canal, you'll find three interpretative routes: *agricultural transformation in the valley*, a short route that will enable you to appreciate agricultural and livestock activity; *growth and urbanisation in the valley*, a route that starts in the irrigation area but delves into the historic and traditional centre of the parish; and human beings and their adaptation to natural hazards, a route that will explain how people manage issues related with natural hazards.



TECHNICAL INFORMATION

- 1h 10 MIN
- 3 M
- 5.130 M
- NO*
- APPROXIMATE TIME

ROUTE SIGNAGE

- WRONG DIRECTION

PLACE	DISTANCE	TIME	COORDINATES	DESCRIPTION
ALTITUDE	ASCENT/DESCENT			
1 REC DEL SOLÀ 1.100 m	-- (--)	--	N42 30.798 E1 31.774	To reach the starting point you must head towards the intersection by the access to Sant Ermengol school. There you take the Llobatera path on the left (heading south) until you reach the irrigation canal and then follow the course of the water.
2 ELS ESPUIS PATH 1.098 m	3.500 m (-2 m)	1h	N42 30.613 E1 31.333	You will pass alongside an area of orchards and typical flora of sunny areas, which comes into obvious contrast with the shaded area and the areas beneath the canal.
3 REC DEL SOLÀ PICNIC AREA 1.098 m	4.240 m (0 m)	1h 40'	N42 30.448 E1 31.032	Just a few metres above the irrigation canal, you'll find a picnic area with tables and grills, which is also a magnificent viewpoint that looks out over the valley. Throughout the route, you'll come across many paths that lead to the canal, overcoming the steep slope on the sunny side of the mountain.
4 END OF THE REC DEL SOLÀ 1.097 m	5.130 m (-1 m)	2h'	N42 30.280 E1 30.620	You'll reach the end of the Rec del Solà route. During the route, you can obtain information on the three interpretative trails that are available: the agricultural transformation of the valley, the growth and urbanisation of the valley and man and his adaptation to nature's risks. Are you up for it?



* You can return by following the same route.

ROUTE PROFILE

