

83 TOMB LAUREDIÀ (LONG ROUTE)



DON'T MISS...

tasting Ratassia liqueur, an artisan liqueur made from nuts and medicinal herbs gathered by hand from the mountains of Andorra. The result of a long preparation process that has been handed down over generations.

DID YOU KNOW...

That the typical construction in Andorra was the 'Borda' or farm building, a rustic construction, made up by a two-storey building and a cabin.

BEHIND THE NAME

Laurèdia: according to Joan Corominas, is the ancient name for Lòria (Sant Julià de Lòria), which according to the Act of consecration of the cathedral of La Seu dated 839, is a Latin name for a person *Lauridius*, although it might also come from *Salòria* as it seems to contain the same ending, and in this case the use of the article "sa" would indicate a name referring to water.



Wild daffodil
(*Narcissus Pseudonarcissus*)



Roc de l'Àliga path



Primula Veris



Sant Mateu de Pui d'Olivesa

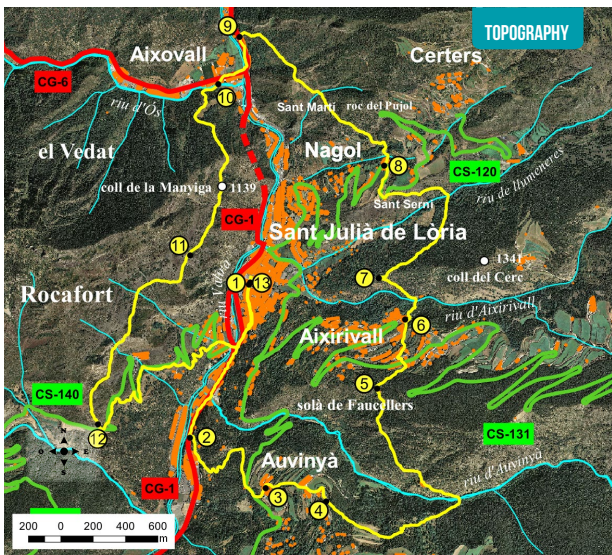
Fantastic circular route in Sant Julià de Lòria parish, where you can discover the best known places in the south valley. The alternation of open areas with amazing views over the parish and imposing woodlands make this a very interesting route for enjoying landscapes.

The trail provides you with the chance to discover the beautiful towns of Auvinyà and Aixirivall, as well as the Sant Martí de Nagol church, dating back to 1048, which was built on the side of a cliff overhanging the valley.

Along this route, you can also visit the Ossa cave, a shallow cave which carries the cruel legend explaining how a farmer killed the bear that lived in this cave. He set fire to the entrance of the cave and axed the bear when she tried to enter the cave to save her cubs.

It is worth highlighting that Sant Julià is a parish with a long-standing wine growing tradition. You can visit Casa Auvinyà with wines that attract many collectors and lovers of exclusive products, both due to the quality of the wine and the very few number of bottles produced each year. The Mas Berenguer winery is a small family-run business that is proud of keeping this age-old agricultural tradition alive.

The Casa Beal winery was designed to produce top-end white wines with the highest quality and full organic guarantee. And last of all, the Borda Sabaté winery is a typical mountain estate, owned by the Sabaté family since 1944. Some of these wineries have received international recognition.



PLACE ALTITUDE	DISTANCE ASCENT/DESCENT	TIME	COORDINATES	DESCRIPTION
1 PLAÇA DE LA GERMANDAT 908 m	-- (-)	--	N42 27.889 E1 29.459	Take the CG-1 road towards Sant Julià de Lòria. The starting point of this route is located at the centre of the town, at Plaça de la Germandat square.
2 AUVINYÀ PATH 887 m	1.350 (-22)	10'	N42 27.368 E1 29.195	Continue along Avinguda Verge de Canòlich until you reach the main road, then walk down to the second roundabout where you will come to the Auvinya path.
3 AUVINYÀ 1.150 m	3.310 (+250 -15)	45'	N42 27.202 E1 29.539	The first stretch is a wide cobblestone road. The route gains altitude until reaching the Ferrer Nou farm building. Then you will come to the road and cross it leaving the GRP behind, just a few metres from the town of Auvinya.
4 MAS PATH 1.264 m	3.410 (+112 -16)	1h 15'	N42 27.160 E1 29.812	Leave the town of Auvinya behind and follow the GR7 (white and red markings) until reaching the Sant Romà hermitage. After a few metres you will come to the Mas path.
5 EL COLLELL 1.314 m	5.590 (+143 -123)	2h 15'	N42 27.539 E1 30.037	Continue along the narrow track into the forest, until you cross the river Auvinya. Then pass the Mas farm buildings. The trail continues on flat ground until reaching the Collell.
6 AIXIRIVALL 1.179 m	6.310 (+139 -139)	2h 45'	N42 27.770 E1 30.160	Leave the GR, continue along the communal road to the left (yellow dots). Only a few metres from the road, you'll have to cross it twice before reaching the old town of Aixirivall.

PLACE ALTITUDE	DISTANCE ASCENT/DESCENT	TIME	COORDINATES	DESCRIPTION
7 ROC DE L'ÀLIGA PATH 1.212 m	6.950 (+14 -73)	3h 20'	N42 27.907 E1 30.039	Take the road which is on your right. Then cross the River Axirivall. Soon after you'll come to an intersection with the Cami de l'Àliga path.
8 SANT MARTÍ DE NAGOL PATH 1.214 m	8.440 (+132 -136)	4h	N42 28.274 E1 30.037	The trail gains altitude initially, to then descend and cross the river Llumeneres. After which you'll reach the Sant Serni hermitage. Descend about 200 metres along the road until you reach the Sant Martí de Nagol path.
9 FONT DE L'ARTIC WATER SPRING 1.031 m	10.070 (+39 -224)	4h 25'	N42 28.708 E1 29.400	The trail continues on flat ground providing exceptional views of the Sant Martí de Nagol hermitage, built onto a vertical rock. You will then pass through the cold water spring. Just after the intersection, turn to the right along the short-cut between Sant Martí de Nagol and the Font de l'Artic water spring.
10 ROCAFORT PATH 1.051 m	10.530 (+1 -20)	4h 30'	N42 28.550 E1 29.306	At the Aixovall roundabout. Continue along Carretera General 6 for 130 metres. Turn left onto the first street. Then you'll come to a wooden bridge and you'll see the GRP markings. After a few metres you'll come to the Rocafort path.
11 LA MANYIGA HILL 1.264 m	12.020 (+251 -63)	5h 40'	N42 27.977 E1 29.187	The trail will meander through the forest while gaining altitude. To then come to La Tàpia hill. Moving parallel to the valley you'll reach La Manyiga hill, where handrails have been fitted to help you during the climb.
12 JOU HILL 1.257 m	13.580 (+116 -111)	6 h 55'	N42 27.410 E1 28.779	The trail continues on flat ground passing by the midday sign. You then leave the Cova de l'Ossa path behind. Soon after, you'll reach Jou hill.
13 PLAÇA DE LA GERMANDAT 1.265 m	16.000 (+22 -277)	8 h	N42 27.889 E1 29.459	Take the road that heads towards Sant Julià de Lòria, making sure you take the short-cuts marked as GRP. You'll have to descend until you come to the Fontaneda bridge that crosses the River Gran Valira. Continue along the CG-1 road until Avinguda Verge de Canòlich, a few hundred metres further on you'll come to Plaça de la Germandat.

TECHNICAL INFORMATION

- 8H
- + 939 M
- 582 M
- 16.000 M
- SI
- APPROXIMATE TIME

ROUTE SIGNAGE

- GR7
- GRP
- WRONG DIRECTION



Sant Julià de Lòria
portal d'Andorra

ROUTE PROFILE

