

14 CAMÍ DE L'OBAC D'INCLES

WALKING IN ANDORRA



DON'T MISS...

taking photos as you go of the various typical rustic buildings known as *bordes*.

DID YOU KNOW...

the Incles River, in ecological terms, is a stream rich in iconic species such as trout and common frog.

BEHIND THE NAME

Tarter: the name may derive from Tartarus, which comes from the common Latin and Greek meaning 'hell', or it could be an Iberian morpheme (tar - tar), which means 'a lot'.



Crocus



Reig Chapel



Red elderberry

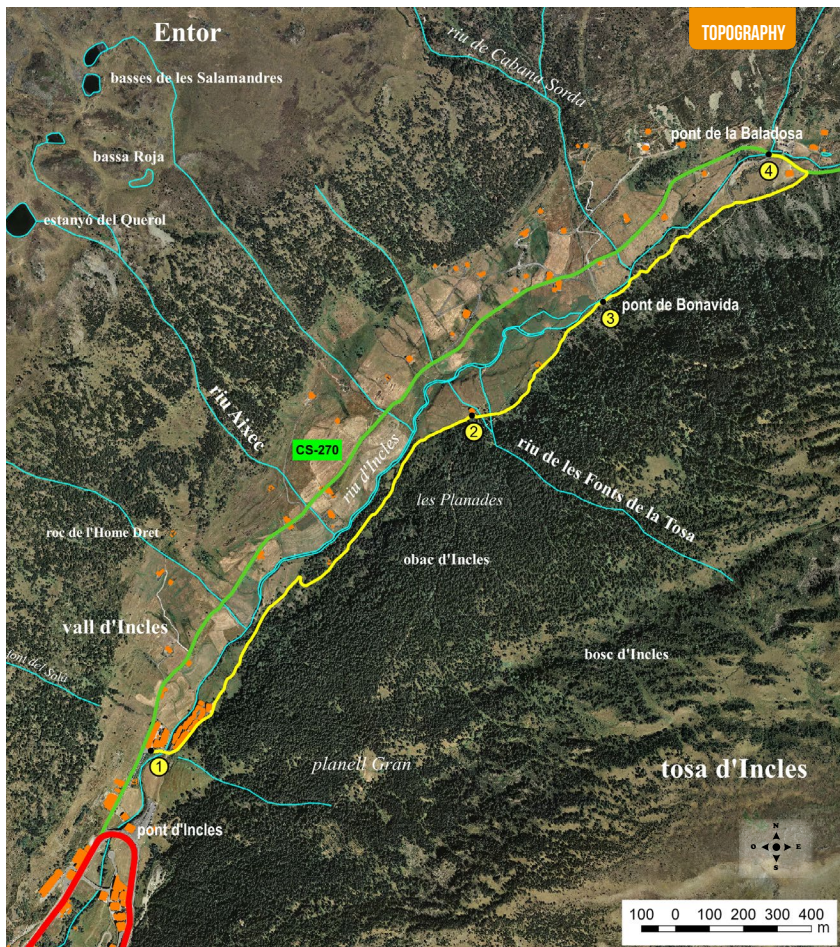
Easy route in the parish of Canillo, between the villages of El Tarter and Soldeu.

Camí de l'Obac d'Incles is a very easy route, ideal for families and a great way to explore the magnificent Incles Valley. The path follows the course of the Incles River and information panels along the route describe the jobs our Andorran ancestors used to do here. Livestock, agriculture and fishing are some of the roles covered. The meadows, *bordes* and cattle you find bear witness to the rural life of Andorra's inhabitants.

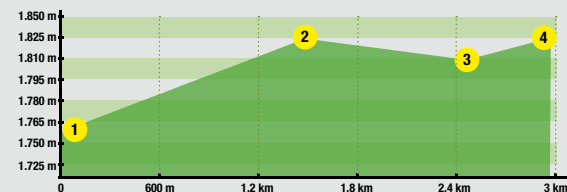
The most stand-out species of vegetation you'll find are the silver fir (*Abies alba*), the mountain pine (*Pinus uncinata*), the rowan (*Sorbus aucuparia*) and the arnica (*Arnica montana*), among others.

When it comes to wildlife, you're very likely to see a griffon vulture (*Gyps fulvus*), the footprint of a wild boar or pig (*Sus scrofa*), a roe deer (*Capreolus capreolus*) and, with a bit of luck, a mythical capercaillie (*Tetrao urogallus*). The path essentially follows the course of the Incles River, which runs through the entire valley.

14



ROUTE PROFILE



TECHNICAL INFORMATION

- ● ● ●
- 1H 05 MIN
- +53M
- 53 M
- 2.935 M

APPROXIMATE TIME

ROUTE SIGNAGE



PLACE	DISTANCE	TIME	COORDINATES	DESCRIPTION
ALTITUDE	ASCENT/DESCENT			

1	DÉU SOL APARTMENTS	-	-	N42 35.165 E1 39.909	Take the CG-2 in the France - Encamp direction. After kilometre 16, turn left at the entrance to Incles Valley, where you'll find a parking area. A few metres further up, you'll find the Déu Sol Apartments.	
2	BORDA	1500 m (+85 m -15 m)	30'	N42 35.702 E1 40.593	Cross the Incles River and, behind some buildings, you'll find the beginning of the mountain path. Follow this wide, flat path that runs along the shady slope of the mountain (the path's name, <i>obac</i> , means shade), following the course of the Incles River along the right bank until you come to a <i>borda</i> .	
3	BONAVIDA BRIDGE	2050 m (+13 m -29 m)	45'	N42 35.884 E1 40.873	The path now continues up, then down, always keeping to the edge of the forest. The sound of water accompanies you at all times and, shortly after, you reach a rest area where you'll find the small and charming Bonavida bridge.	
4	LA BALADROSA BRIDGE	2.935 m (+36 m -19 m)	1h05'	N42 36.120 E1 41.227	Continue your route up the valley along this pleasant path dotted with bridges, meadows and <i>bordes</i> . You'll get to a broad area with access to the car park. Carry straight on towards the refuge and the Juclar lakes. Shortly afterwards, you'll come to a crossroads. Turn left and go down a few metres until you get to Baladrosa bridge. You can return along the Incles Valley main road or along the same path.	

