

13 CAMÍ DE LA ROCA DE L'HOME DRET



DON'T MISS...

if you have the opportunity, check out some of the other routes in Incles Valley, such as the route up to Juclà lake and its refuge.

DID YOU KNOW...

the route is named after a huge eroded shale formation, and there are various beliefs and stories related to the rock.

BEHIND THE NAME

Incles: may come from the name 'insula', Latin or Basque etymology 'Incliga'



Incles Valley



Juclà peak



Pla de Bordetes



Roca de l'home dret

The landscape of Canillo is based on a relief marked by the action of the Quaternary glaciers. The predominant vegetation in this parish is the mountain pine groves (*Pinus uncinata*), as well as some deciduous trees such as the silver birch (*Betula pendula*), the aspen (*Populus tremula*) or the pussy willow (*Salix caprea*).

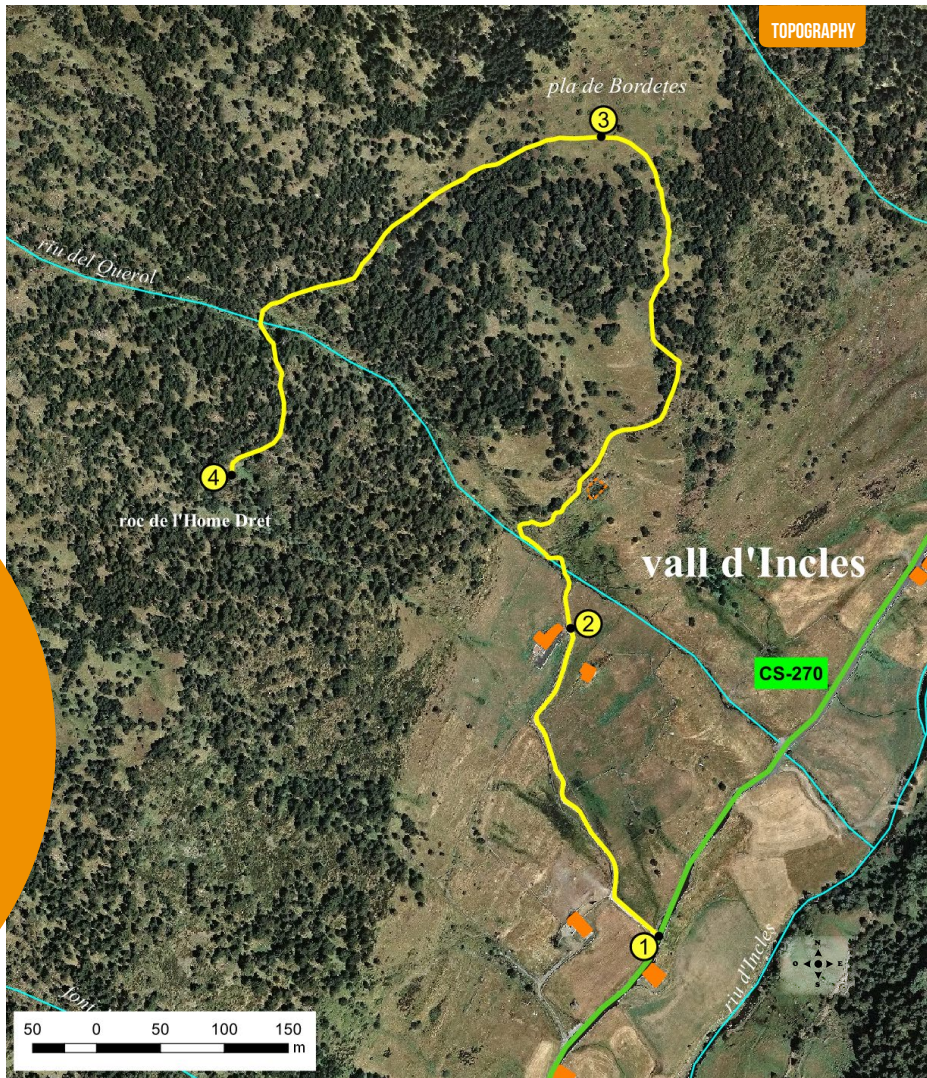
Incles Valley, home to this route, offers one of the most complete landscapes in the Pyrenees thanks to the diversity of the flora in the high mountains and subalpine meadows.

Camí de l'Home Dret is a short route, ideal for families. The path goes along the bottom of Incles Valley, in the parish of Canillo. The main interest of this route is the landscape offered by the magnificent Incles Valley and the unique Roca de l'Home Dret. A huge rock right in the middle of

the path that is perfectly balanced and defies all the laws of nature. From the Roca itself, looking to the left, between pines and firs, rises a majestic snow-capped peak, Alt de Juclar, at the head of the enchanted Incles Valley.

Depending on the time of year, it'll be easy to find aconite (*Aconitum napellus*), snowdrop (*Galanthus nivalis*) or English iris (*Iris latifolia*).

The birds that usually nest in this valley are the dunnock (*Prunella modularis*), the whinchat (*Saxicola rubetra*) and the yellowfinch (*Emberiza citronella*), among others. Common wall lizards (*Podarcis muralis*) are easy to spot on dry stone walls, as are common frogs (*Rana temporaria*) in water areas.



TECHNICAL INFORMATION



50 MIN

30 MIN

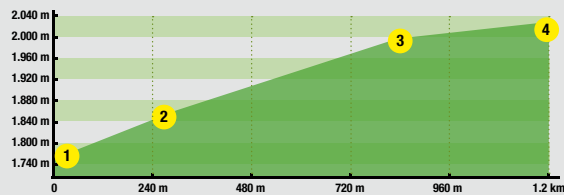
+214M

APPROXIMATE TIME

ROUTE SIGNAGE



ROUTE PROFILE



PLACE ALTITUDE DISTANCE ASCENT/DESCENT TIME COORDINATES DESCRIPTION

1 START OF THE PATH 1.786 m	- (-)	-	N42 35.319 E1 39.989	Take the CG-2 in the France - Encamp direction. Pass through the villages of Encamp, Canillo and El Tarter. After kilometre 16, turn left at a turn-off to the entrance to Incles Valley, where you'll find a parking area. Walk along the Incles Valley main road and you'll immediately find a sign indicating the start of the path.	
2 COM DE FUSTA 1.849 m	285 m (+63 m)	15'	N42 35.449 E1 39.941	Take this paved track, which rises on the left with a steep slope until you reach a borda, where you'll find a wooden hut.	
3 PLA DE BORDETES 1.980 m	810 m (+131 m)	40'	N42 35.659 E1 39.954	From this point, leave the paved road and continue up a mountain path. You'll then enter the forest and continue to gain altitude until you reach Pla de Bordetes.	
4 ROCA DE L'HOME DRET 2.000 m	1.275 m (+20 m)	50'	N42 35.516 E1 39.745	The path then softens, gliding through the forest until you reach Roc de l'Home Dret, a uniquely-shaped and perfectly balanced rock.	