

73 CAMÍ DE SANTA COLOMA A LA MARGINEDA

WALKING IN ANDORRA



DON'T MISS...

visiting the Espai Columba museum and the Romanesque Santa Coloma church.

DID YOU KNOW...

the Romanesque paintings in the church were torn down around 1930 and, following a restoration, in 1934 an Agnus Dei and the remains of some decorative borders were discovered on the east wall of the nave, above the triumphal arch? They had been hidden behind the baroque altarpiece and can still be seen *in situ*.

BEHIND THE NAME

Margineda: considerable border, large bank, situated on the bank of the river.



Casa dels Russos



La Margineda roundabout

This simple, short walk introduces you to the small village of Santa Coloma. The route starts at Plaça del Poble in Santa Coloma, in front of the Romanesque Santa Coloma church, which is one of the most beautiful and fascinating of its kind in Andorra. Its floor plan is very simple and you can make out buildings from different eras. The building is of pre-Romanesque origin, with a rectangular nave and a roof covered with wooden trusses. The building was decorated with 12th-century Romanesque murals completed by the Master of Santa Coloma. The paintings left the country in 1930 and eventually ended up in the Prussian Cultural Heritage Foundation's museum in Berlin. In 2007, after a lot of negotiation, the paintings were recovered by the Government of Andorra.

Before setting out, we recommend a visit to the Espai Columba museum, a cultural facility with a mission of curating, conserving and displaying murals from the apse of the church of Santa Coloma and various liturgical objects from Andorran churches. It offers a video mapping projection that allows visitors to enjoy an experience that transports them to the original interior of the church, showing how it would have looked in the 12th century.

The path heads down Carrer Major de Santa Coloma up to the top of the village, where you take a cobbled path, leaving behind a watering place for horses. Along the way, you'll find an iconic piece of Andorran granite architecture by the architect Cèsar Martinell. The Torre dels Russos (the Russian Tower) got its name from the fact that Nicolas Popoff, a Russian exiled to Europe, lived there. The tower is in the Modernist style, reminiscent of Catalan Noucentisme.

ANDORRA LA VELLA

73. CAMÍ DE SANTA COLOMA A LA MARGINEDA

TECHNICAL INFORMATION

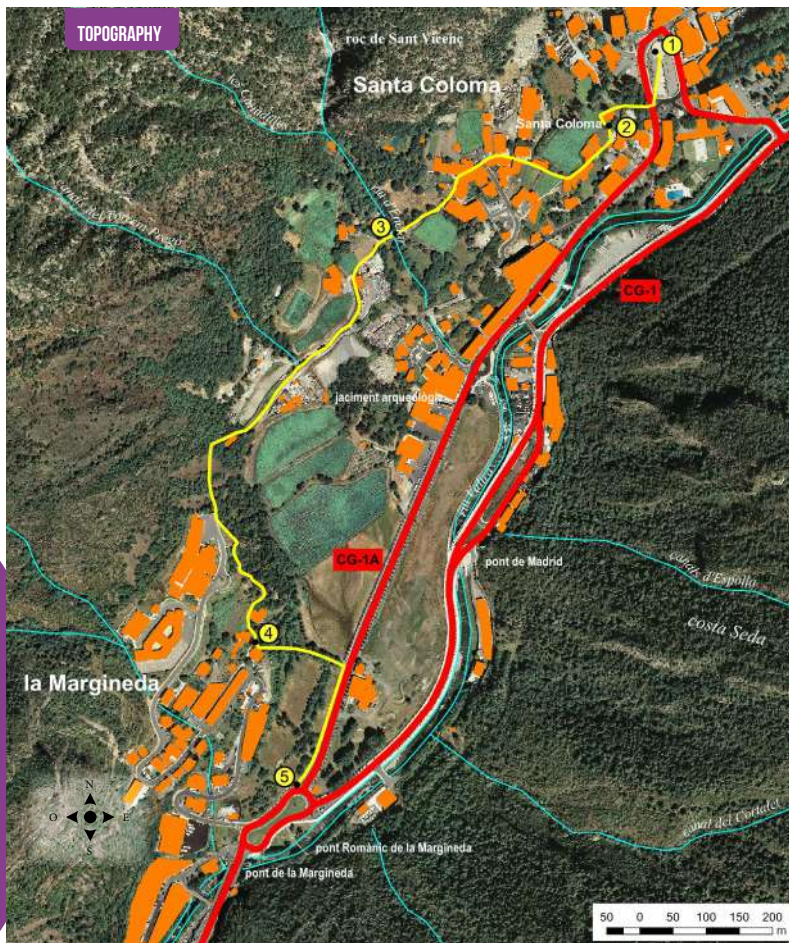


- 35 MIN
- 35 MIN
- +70 M
- 83 M
- 1.960 M
- NO*

APPROXIMATE TIME

ROUTE SIGNAGE

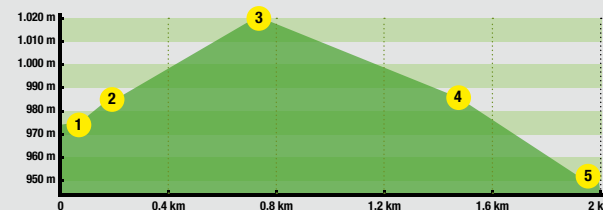
-
- GRP
- WRONG DIRECTION



PLACE ALTITUDE	DISTANCE ASCENT/DESCENT	TIME	COORDINATES	DESCRIPTION
1 SANTA COLOMA PLAÇA DE L'ESPAI COLUMBA 975 m	-- (--)	--	N42 29.704 E1 29.903	Start the route in Plaça de l'Espai Columba in Santa Coloma in the parish of Andorra la Vella, in front of the Santa Coloma church. We recommend visiting L'Espai Columba, where you can find out first-hand how Romanesque murals were painted. You can also find a host of other liturgic objects.
2 SANTA COLOMA CHURCH 983 m	190 m (+8 m)	3'	N42 29.632 E1 29.856	Cross Avinguda d'Enclar and go up to the car park and the church until you reach the entrance of Santa Coloma church. Santa Coloma church is one of the oldest in Andorra, dating back to pre-Romanesque times. It was built between the 8th and 9th centuries.



ROUTE PROFILE



PLACE ALTITUDE	DISTANCE ASCENT/DESCENT	TIME	COORDINATES	DESCRIPTION
3 LA CASA DELS RUSSOS 1.020 m	708 m (+37 m)	15'	N42 29.553 E1 29.622	Head into the old town of Santa Coloma. After a few metres, you'll find Carrer Major on the right-hand side. As you go, you'll discover the old town of Santa Coloma in amongst centuries-old <i>bordes</i> (huts). Staying on Carrer Major, you come to Casa dels Russos, which is a privately-owned building designed by Cèsar Martinell, an example of granite architecture.
4 REFUGI DE CLAROR 985 m	1.520 m (+25 m -47 m)	25'	N42 29.224 E1 29.472	Leave Casa dels Russos behind, following a wide, cobbled path and, after losing a few metres of altitude, climb a steep slope and then go down to the old town of La Margineda.
5 ESTANY DE LA NOU 951 m	1.960 m (-36 m)	35'	N42 29.104 E1 29.514	Taking Camí de la Callissa, on the left-hand side, the wide cobbled path takes you to Avinguda d'Enclar. Go 200 metres down the street until you come to La Margineda roundabout. A few metres away is Pont de la Margineda, which dates to the 15th century and is the largest and slimmest of the medieval bridges in the Principality. You can return along the new pavement of Avinguda d'Enclar, where, just over a kilometre away, you'll find the starting point at L'Espai Columba.

