

70 CAMÍ D'AIXÀS

DON'T MISS...

taking a photo at Pont de la Margineda bridge, which dates back to the 15th century.

DID YOU KNOW...

although the route begins in the parish of Andorra la Vella, the village of Aixàs is found in the parish of Sant Julià de Lòria.

BEHIND THE NAME

Aixàs: documented as Exass (in 1176), the name appears to be pre-Roman for 'house'.

WALKING IN ANDORRA



Scutellaria alpina



Pont de la Margineda



Olive grove (Margineda)



Roc de Persoma landscape

This route starts in La Margineda in the direction of the town of Santa Coloma, but before reaching it, it climbs up Camí de la Callissa. In the old town of La Margineda, you can admire various bordes (huts) and manor houses.

The path takes you by the Font de l'Esquerola water spring and allows you to take in views of the Valls del Sud thanks to the natural viewpoint of Roc de Persoma. Although this route ends at the viewpoint, the path continues to the village of Aixàs, in the parish of Sant Julià de Lòria, where you can also enjoy the church of Sant Joan Evangelista.

The parish of Andorra la Vella is well-known for its down oak (*Quercus pubescens*), the star of the show occupying large areas of shade,

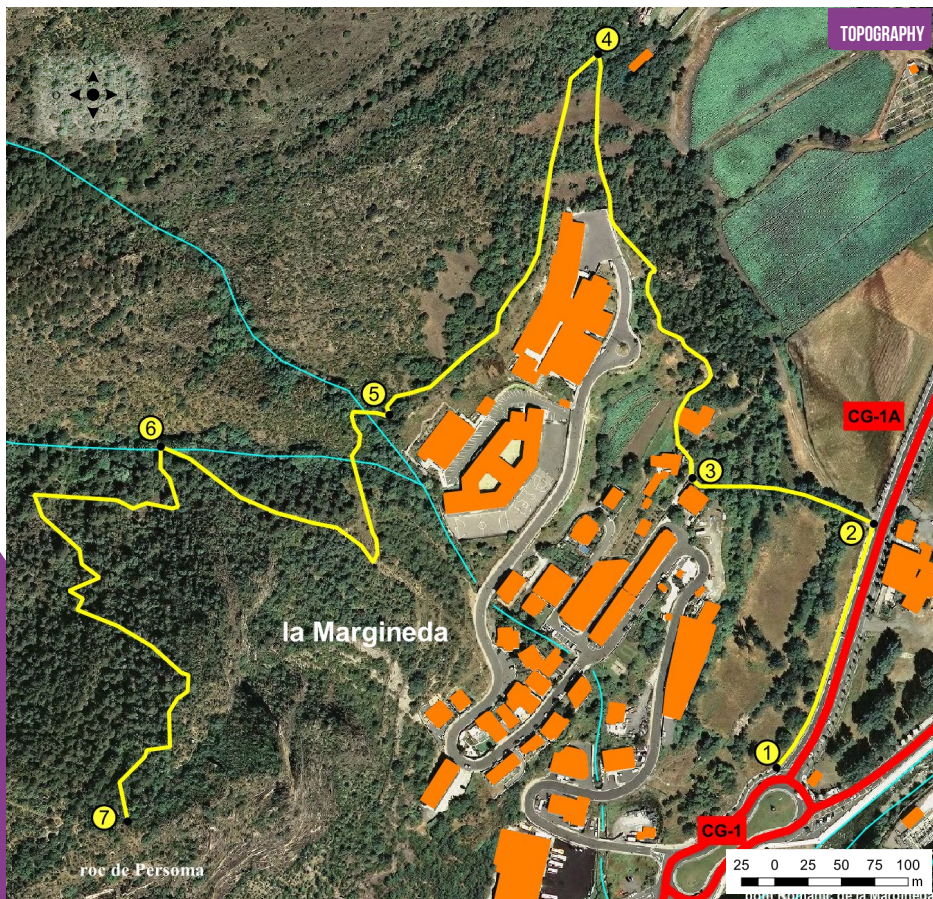
usually below 1,000 metres above sea level. In higher areas, pine forests also predominate, both Scots pine (*Pinus sylvestris*) and mountain pine (*Pinus uncinata*), while in the second part of the walk, hazelnuts feature strongly. In the Enclar massif, the formations are rocky. In terms of fauna, the oaks are home to a host of birds, such as robin (*Erithacus rubecula*), common blackbird (*Turdus merula*) and short-toed treecreeper (*Certhia brachydactyla*). As for the most common birds of prey, you can find black kite (*Milvus migrans*) and European honey buzzard (*Pernis apivorus*). If you walk in silence and in the early hours of the morning, it's not uncommon to find Pyrenean chamois (*Rupicapra pirenaica*), which can be distinguished by their small hook-shaped horns and a characteristic black face, which contrasts with the pale colour of the forehead and neck.

TECHNICAL INFORMATION

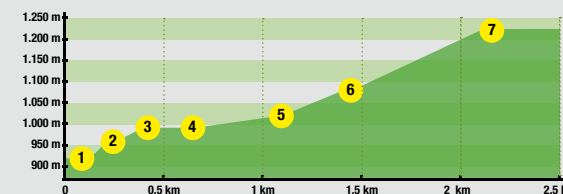
- 4H 10 MIN
- 1H
- +357 M
- 27 M
- 12.300 M
- NO
- APPROXIMATE TIME

ROUTE SIGNAGE

- WRONG DIRECTION
- GRP



ROUTE PROFILE



PLACE ALTITUDE	DISTANCE ASCENT/DESCENT	TIME	COORDINATES	DESCRIPTION
1 LA MARGINEDA ROUNDABOUT 918 m	-- (--)	--	N42 29.100 E1 29.522	The route begins at La Margineda roundabout (main road, kilometre 4), in the parish of Andorra la Vella, bordering the parish of Sant Julià de Lòria. On the other side of the main road, you'll find the Pont de la Margineda bridge, which dates from the 15th century. It is the largest and slimmest of the medieval bridges in the Principality.
2 CAMÍ DE LA CALLISSA 953 m	231 m (+5 m)	3'	N42 29.193 E1 29.566	At the start, take the left verge of the Margineda roundabout towards Santa Coloma (Andorra la Vella). Climb 300 m along the pavement of Avinguda d'Enclar until you come to Camí de La Callissa.

PLACE ALTITUDE	DISTANCE ASCENT/DESCENT	TIME	COORDINATES	DESCRIPTION
3 LA MARGINEDA OLD TOWN 985 m	395 m (+32 m)	10'	N42 29.220 E1 29.475	Go up the wide, cobbled path from La Callissa to the old town of La Margineda, where you'll find various <i>bordes</i> (huts) and manor houses built out of granite
4 CAMÍ D'AIXÀS 982 m	720 m (+27 m)	20'	N42 29.356 E1 29.421	From this point, follow the GRP (yellow and red marks). The route continues along the wide, cobbled path, passing a few metres from Margineda secondary school, then joining Camí d'Aixàs.
5 WOODEN BRIDGE 1.007 m	1.180 m (+46 m -23 m)	30'	N42 29.235 E1 29.299	The path climbs quickly, skirting Margineda secondary school and then coming to a wooden bridge.
6 FONT DE L'ESQUEROLA 1.070 m	1.480 m (+63 m)	45'	N42 29.232 E1 29.187	Zigzag over the steep slope and then reach the Font de l'Esquerola water spring, which is a few metres from the path.
7 CAP DEL ROC DE PERSOMA 1.244 m	2.110 m (+174 m)	1h 20'	N42 29.078 E1 29.171	From this point, the path is marked by a steep slope at all times and you'll have to climb 174 metres before reaching the head of Roc de Persoma. This exceptional natural viewpoint looks over the valleys in the south (Valls del Sud) of the Principality of Andorra.