

# 86 CAMÍ DELS BESSETS DE BAIX

## DON'T MISS...

visiting the church of Sant Julià i Sant Germà, featuring the work of Father Marco Ivan Ruprik, known as the Michelangelo of the 21st century.

## DID YOU KNOW...

this path takes you to the Catalan village of Faucellers in Alt Urgell.

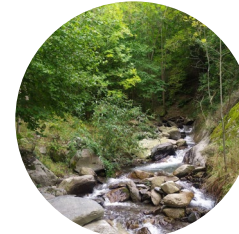
## BEHIND THE NAME

**Besset:**  
Besset is a diminutive of *beç* or *bedoll*, birch, a common type of tree in the area.

WALKING IN ANDORRA



Chestnut



River



Least weasel  
(*Mustela nivalis*)



Juberri Gardens

This simple path connects the village of Aixirivall with the lands of the region of Faucellers. Go down diagonally, criss crossing, along the bottom of Faucellers, until you reach the River Aixirivall. Most of the path is over a dry stone embankment. You'll come to the village of Auvinyà and the path will therefore be shorter.

In terms of fauna, in the parish of Sant Julià de Lòria, the wealth of reptiles is particularly noteworthy, given the high thermoregulatory

potential offered by these environments. Some examples include ladder snake (*Rhinechis scalaris*) and Algerian sand racer (*Psammotromus algirus*), among others. There are also some birds worthy of mention, such as corn bunting (*Emberiza calandra*) and woodchat shrike (*Lanius senator*), practically limited to the very south-west of Andorra. The mammals in the area include a common genet (*Genetta genetta*), a carnivore probably introduced by the Moors to the Iberian peninsular centuries ago.

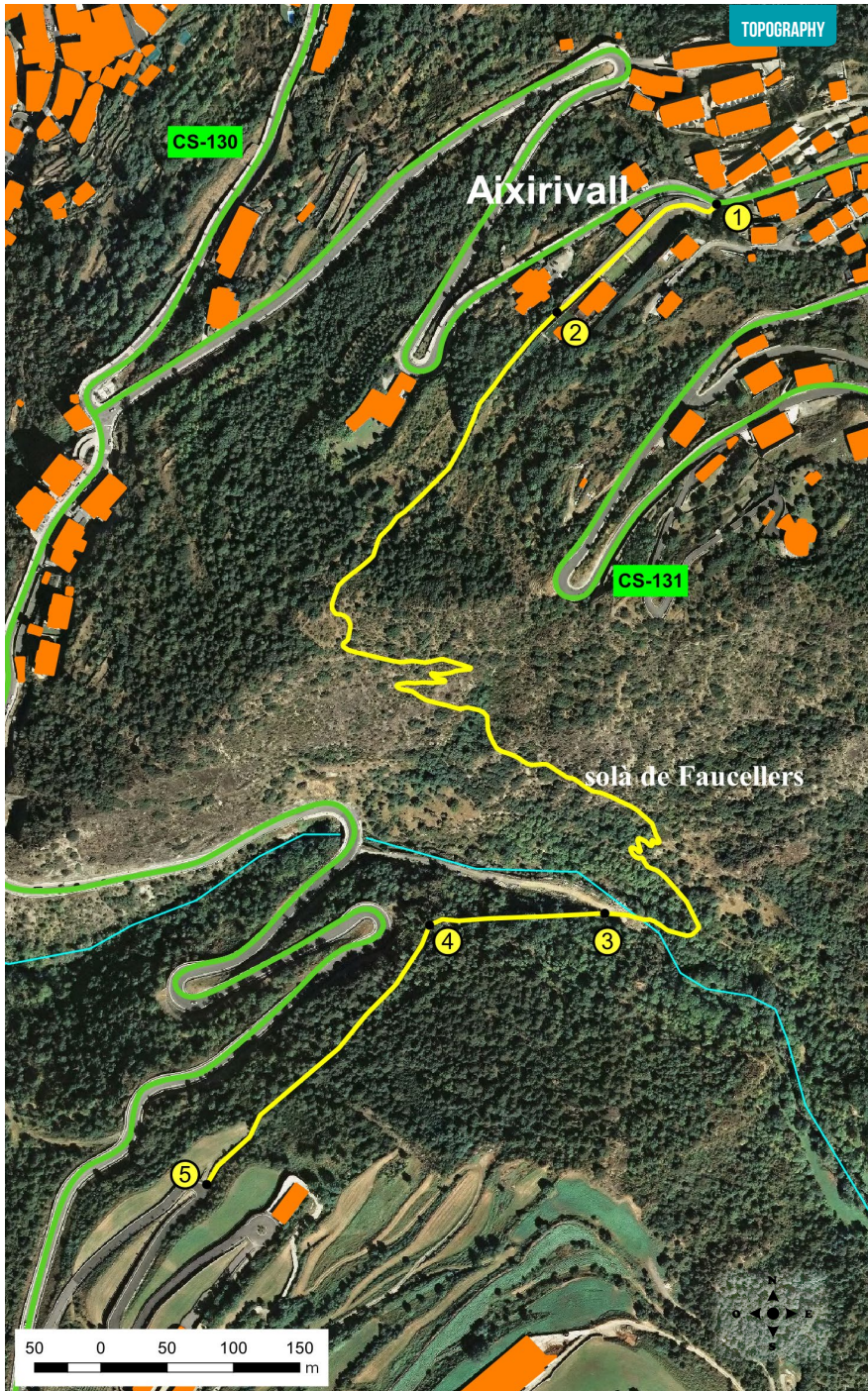
# 86

**TECHNICAL INFORMATION**

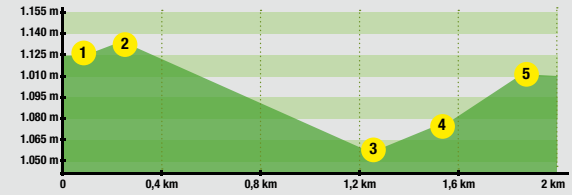


- 35 MIN
- 35 MIN
- +91 M
- 91 M
- 1.760 M

APPROXIMATE TIME  
**ROUTE SIGNAGE**



**ROUTE PROFILE**



PLACE ALTITUDE	DISTANCE ASCENT/DESCENT	TIME	COORDINATES	DESCRIPTION
<b>1</b> AIXIRIVALL 1.125 m	-- (--)	--	N42 27.707 E1 29.827	The start of the route can be found on the Peguera CS 131 main road, km 1, in the village of Aixirivall, in the parish of Sant Julià de Lòria.
<b>2</b> CAMÍ DELS BESSETS DE BAIX 1.133 m	150 m (+8 m)	3'	N42 27.666 E1 29.746	You'll find a large wooden sign for Camí dels Bessets de Baix, and, 150 metres away, you'll find the path.
<b>3</b> WOODEN BRIDGE OVER RIVER AUBINYÀ 1.059 m	1.290 m +24 m -100 m)	20'	N42 27.424 E1 29.765	Just after setting out, pass through Boixos tunnel. The path then flattens out until you see the La Rabassa main road. You'll then lose altitude until you come to River Aubinyà, where you'll find a wooden bridge.
<b>4</b> CROSSROADS LA RABASSA MAIN ROAD 1.075 m	1.440 m (+16 m)	27'	N42 26.082 E1 30.977	Cross the river via the wooden bridge and you'll then have to climb to come to a crossroads, where, after a few metres, you'll reach the La Rabassa main road.
<b>5</b> AUBINYÀ 1.116 m	1.760 m (+43 m)	35'	N42 27.306 E1 29.558	Follow the path and without too much effort you'll come to the main road. After a few metres, you'll reach the village of Aubinyà.