

30 ESTANYS D'ENSAGENTS

DON'T MISS...

the visit to El Tamarro Enko, just metres from the trailhead.

DID YOU KNOW...

the end of this road is where the final stage of the Vuelta a España took place?

BEHIND THE NAME

Ensagents: Name of unknown origin, which probably has the toponymic prefix en- (Encamp).

WALKING IN ANDORRA



Pine bolete
(*Boletus pinophilus*)



Sign



Ensagents lake

This beautiful route runs through the Ensagents valley to the lakes of the same name.









Wild, natural surroundings are guaranteed at all times. To access the Estanys d'Ensagents lakes, follow Camí de la Solana d'Ensagents, which is not very busy. The lakes, which belong to the Gargantillar glacial cirque, are the result of the over-excavation basins in the last ice age, when the ice widened the valleys, scratched the skin of the earth and opened downwards, creating valleys.

These bodies of water have some very specific physical, chemical and biological conditions, due to the high-mountain geological and climatic conditions.

The path to the Ensagents refuge passes through a mountain pine forest. Further up, high-mountain meadows and alpine flora are the stars of the show. The diversity of the flora in this Pyrenean valley and along the whole route is one of its main attractions. Around the lakes, the most common species of vegetation are those typical of Pyrenean lakeside environments.

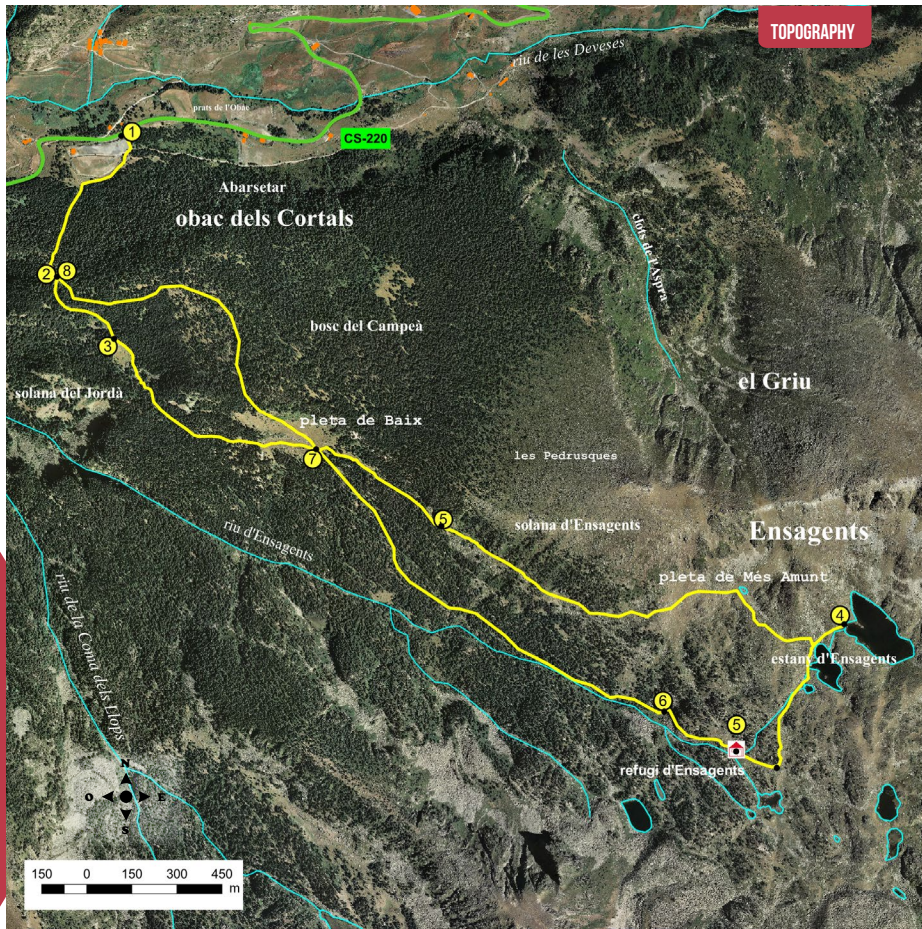
This route allows you to enjoy some fantastic views over the main glacial cirques in the parish of Encamp and the rest of the Principality. If you want to spend the night, you can stay in the free Ensagents refuge, equipped for eight people.

TECHNICAL INFORMATION

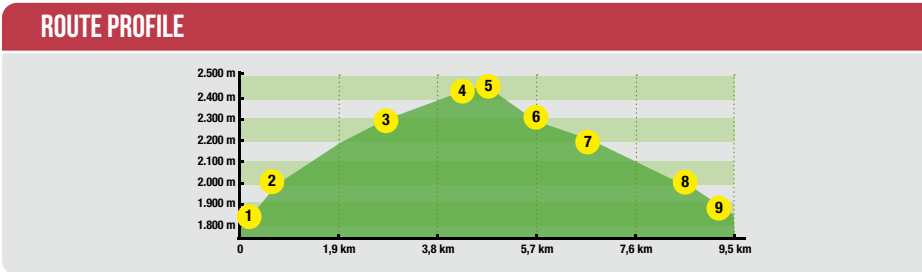
-    
-  2H 15 MIN
-  1H 45 MIN
-  +676 M
-  -676 M
-  9.320 M
-  APPROXIMATE TIME

ROUTE SIGNAGE

-   
-  WRONG DIRECTION



PLACE ALTITUDE	DISTANCE ASCENT/DESCENT	TIME	COORDINATES	DESCRIPTION
1 LES PARDINES CAR PARK 1.885 m	-- (--)	--	N42 32.112 E1 37.025	From the parish of Encamp, take the Cortals d'Encamp main road (CS- 220) located in front of the Funicamp gondola. At kilometre 6.1, you'll find a forest track on the right with the start of the path.



PLACE ALTITUDE	DISTANCE ASCENT/DESCENT	TIME	COORDINATES	DESCRIPTION
2 PATH CROSSROADS 2.010 m	615 m (+125 m)	20'	N42 31.863 E1 36.866	Straight away, you'll go through a picnic area and into the woods. After a slope, you come to a signposted junction.
3 EXIT FROM THE FOREST 2.305 m	2.450 m (+100 m)	1h 25'	N42 31.418 E1 37.801	Take Camí de la Solana d'Ensagents leading to Estanys d'Ensagents and Collada d'Entinyola. Continuing in a south-easterly direction, the path is marked by a steep slope until you reach the exit of the forest.
4 ESTANY GRAN D'ENSAGENTS 2.450 m	4.390 m (+248 m -10 M)	2h 15'	N42 31.248 E1 38.782	Leaving the forest, after passing the granite blocks, you'll reach the Estanys d'Ensagents lakes.
5 ENSAGENTS REFUGE 2.425 m	5.270 m (-30 m)	2h 35'	N42 31.018 E1 38.522	Follow the path in the middle of granite blocks and you'll arrive at the Ensagents refuge, well-equipped for eight people.
6 SCREE SLOPE 2.350 m	5.420 m (+85 m)	2h 45'	N42 31.018 E1 38.522	Leave the refuge behind and continue gradually down, parallel with the River Ensagents, until you reach a scree slope with granite blocks.
7 CROSSROADS CAMÍ DE LA SOLANA 2.205 m	7.030 m (-153 m)	3h 15'	N42 31.555 E1 37.497	Continue parallel to the river, where you'll cross various small wooden bridges. After leaving a large clearing behind, you'll reach the junction of Camí de la Solana d'Ensagents and Camí d'Ensagents again.
8 CROSSROADS CAMÍ DEL BOSC DEL CAMPEÀ 2.010	9.180 m (+114 m -165 m)	3h 45'	N42 29.715 E1 39.480	Follow the Font del Campeà path through the beautiful Campeà black pine forest. You'll leave behind two crossroads, always following your right until you arrive to the Camí de la Coma dels Ilops and Camí d'Ensagents crossroad.
9 CORTALS MAIN ROAD 1.885 m	9.320 m (-170 m)	4h	N42 32.112 E1 37.025	Descend via Camí Ensagents to the Cortals d'Encamp main road, kilometre 6.1.

