

21 BONY DE LES NERES

DON'T MISS...

complete one of 6 routes of the tourist bus called "L'Altra Andorra" ("The other Andorra"), which is available for combining landscapes, culture and history. For more information, inquire at any tourist office.

DID YOU KNOW...

There is a 17th-century dovecot in Encamp called "En Cotxa". Its uniquely decorated features include the woodwork and window frames, a popular symbol of Andorra.

BEHIND THE NAME

Bony de les Neres: From the Latin word *nigra*, meaning "black". The etymology of *bony* is not known, although some historians state that it is certainly of pre-Roman origin, based on *bunna*, meaning "an elevation on isolated land".

WALKING IN ANDORRA



La Tossa forest



Views of Encamp



Defence tower



L'alt del Griu

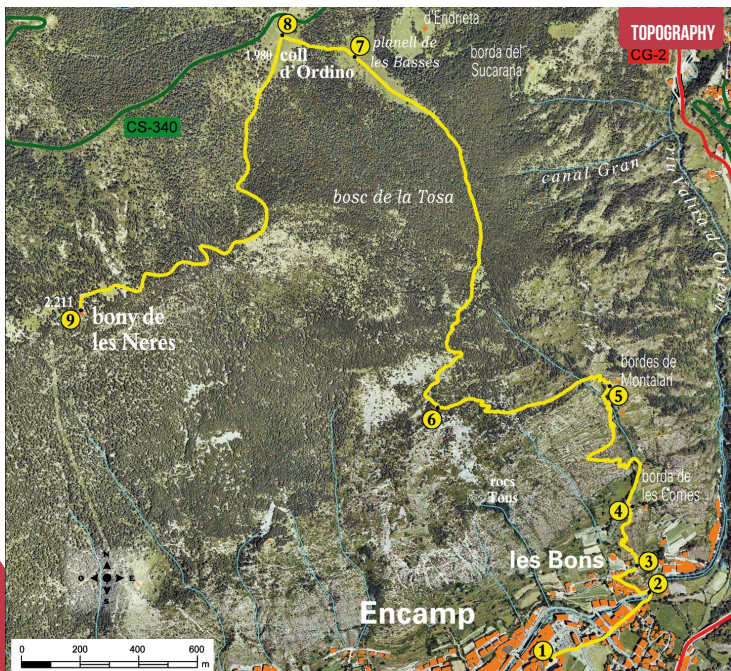
This climb, approximately 1,000 metres of difference in elevation, can be completed from both the parishes of Ordino and Encamp.

The climb first takes you to the historic site at Les Bons, which includes the 10th-century church of Sant Romà, a 13th-century defence tower, a water tank with an irrigation system carved out in the rock, the remains of a 17th-century strong house that bears witness to local civil architecture and two modern-day dovecots.

Inside the church, they have conserved the stone altar, reproductions of 12th-century Romanesque paintings by the Mestre de Santa Colo-

ma representing the apocalyptic visions of Saint John and 16th-century paintings in the Gothic tradition with varied religious iconography.

As you come upon Ordino pass and before you enter the forest surrounding the Les Neres spur, you'll see an orientation table and magnificent views of both the northern and eastern valleys. As you climb, the ever-present forest will offer opportunities to catch a glimpses of local birds like the common goldcrest (*Regulus regulus*) and the great tit (*Parus ater*), or little animals like the red fox (*Vulpes vulpes*), the European hare (*Lepus europaeus*) and the marten (*Martes martes*).



*You can return by following the same route, or you can take the GR-11 until the village of Ordino. In that case, you should plan for an extra means of transportation.

TECHNICAL INFORMATION

- 3H 30 MIN
- 2H 15 MIN
- +940 M
- 6.150 M
- NO*
- APPROXIMATE TIME

ROUTE SIGNAGE

- GR 11
- WRONG DIRECTION



PLACE ALTITUDE	DISTANCE ASCENT/DESCENT	TIME	COORDINATES	DESCRIPTION
1 ARÍNSOLS SQUARE 1.265 m	-- (--)	--	N42 32.178 E1 35.004	You'll start the route at the Arínsols square, just in front of Comú d'Encamp building.
2 SIGN FOR LES BONS 1.290 m	467 m (+25 m)	10'	N42 32.305 E1 35.249	Follow the GR-11, heading east along a paved road called Camí Real, which will take you to the CG-2. Cross the road and continue down an avenue called Avinguda Rouillac in the direction of Les Bons, where you'll find an information sign indicating the next stretch.
3 SANT ROMÀ DE LES BONS 1.335 m	737 m (+45 m)	20'	N42 32.354 E1 35.217	The route continues following the indications for the GR-11 along a street called Carrer de Sant Romà that passes through the old centre of Les Bons until arrive at the Lombard Romanesque church of Sant Romà de les Bons.
4 SIGN FOR ORDINO PASS 1.385 m	1.050 m (+50 m)	35'	N42 32.463 E1 35.204	Continue along the GR-11 on a paved path until you reach a sign that indicates the path to the farm at Les Comes and Ordino pass.



PLACE ALTITUDE	DISTANCE ASCENT/DESCENT	TIME	COORDINATES	DESCRIPTION
5 HUT IN RUINS 1.585 m	1.900 m (+200 m)	1h 15'	N42 32.686 E1 35.145	From this point, the path zig-zags until you reach a point just above a hut in ruins.
6 INTERSECTION 1.785 m	2.640 m (+200 m)	1h 55'	N42 32.643 E1 34.715	A bit further on, the path clearly changes direction, now heading west. Continue in this direction for a while until you come upon an intersection with a sign indicating the routes; to the left is the La Carrera road, and to the right is the GR-11 to Ordino pass.
7 SIGN FOR URINA RIVER 1.920 m	4.200 m (+135 m)	2h 30'	N42 33.291 E1 34.499	Keep on along the GR-11 towards Ordino pass. From this point, the path continues up a slope into a forest. After a while, the path levels out as you go through La Tossa forest. Keep on as it alternates between forests and clearings until you reach the Les Basses plateau. Here you'll find a wooden sign indicating the path to the Urina and Racons rivers.
8 ORDINO PASS 1.980 m	4.480 m (+160 m)	2h 45'	N42 33.330 E1 34.318	The path heads back into the forest until further along, you reach a plateau typical of Ordino pass. At this point, you can admire the beautiful views of Alt del Griu peak on one side and of the Arinsal mountains on the other.
9 LES NERES SPUR 2.205 m	6.150 m (+225 m)	3h 30'	N42 32.817 E1 33.820	Follow the signs that you find next to the viewpoint heading for the Les Neres spur. The route continues through the meadow until it reaches a forest slope that goes up the south side. You'll have to carry on for 2 kilometres until the Les Neres spur.



ROUTE PROFILE

